

SOUTH BOSTON, VIRGINIA

AL-5112 (FAA)

RNAV (GPS) RWY 19

SOUTH BOSTON / WILLIAM M. TUCK (W78)

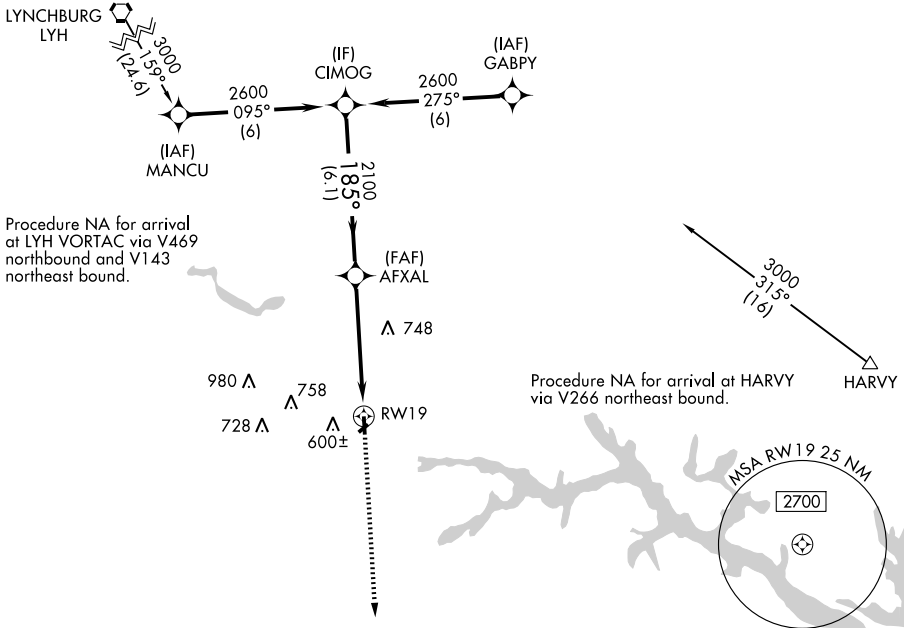
APP CRS	Rwy Idg	4003
185°	TDZE	420
	Apt Elev	420

DME/DME RNP-0.3 NA. Visibility reduction by helicopters NA.
 Use Danville Regional altimeter setting; when not received, use Lynchburg Rgnl/Preston Glenn Field altimeter setting and increase all MDA 100 feet, increase LNAV and circling Cat C visibility ½ mile.

MISSED APPROACH: Climb to 2600 direct BUSSI and hold.

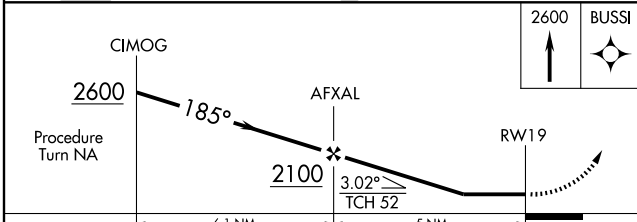
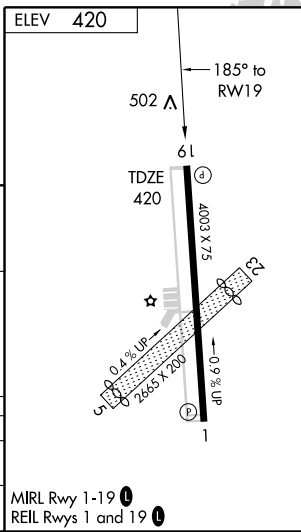
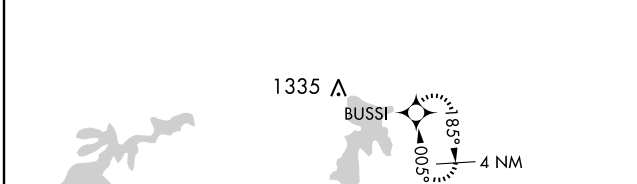
WASHINGTON CENTER
124.05 307.0

UNICOM
122.8 (CTAF) 0



NE-3, 11 MAR 2010 to 08 APR 2010

NE-3, 11 MAR 2010 to 08 APR 2010



CATEGORY	A	B	C	D
LNAV MDA	1020-1	600 (600-1)	1020-1½ 600 (600-1½)	NA
CIRCLING	1020-1	600 (600-1)	1020-1½ 600 (600-1½)	NA

MRL Rwy 1-19 0
 REIL Rws 1 and 19 0

SOUTH BOSTON, VIRGINIA
 Orig 09239

36°43'N - 78°51'W

SOUTH BOSTON / WILLIAM M. TUCK (W78)

RNAV (GPS) RWY 19