

RNAV (GPS) RWY 3
ALAMOGORDO-WHITE SANDS RGNL (A.I.M)

APP CRS 035°	Rwy Idg 7006
	TDZE 4167
	Apt Elev 4200

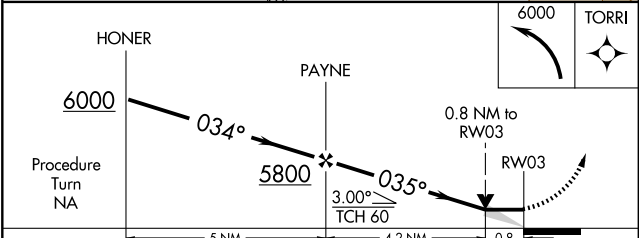
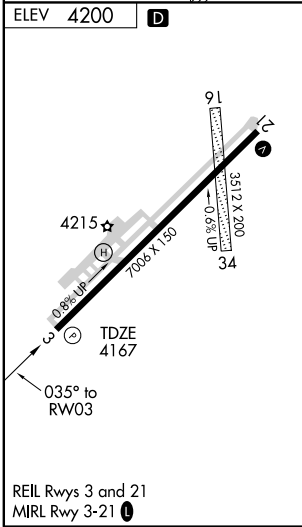
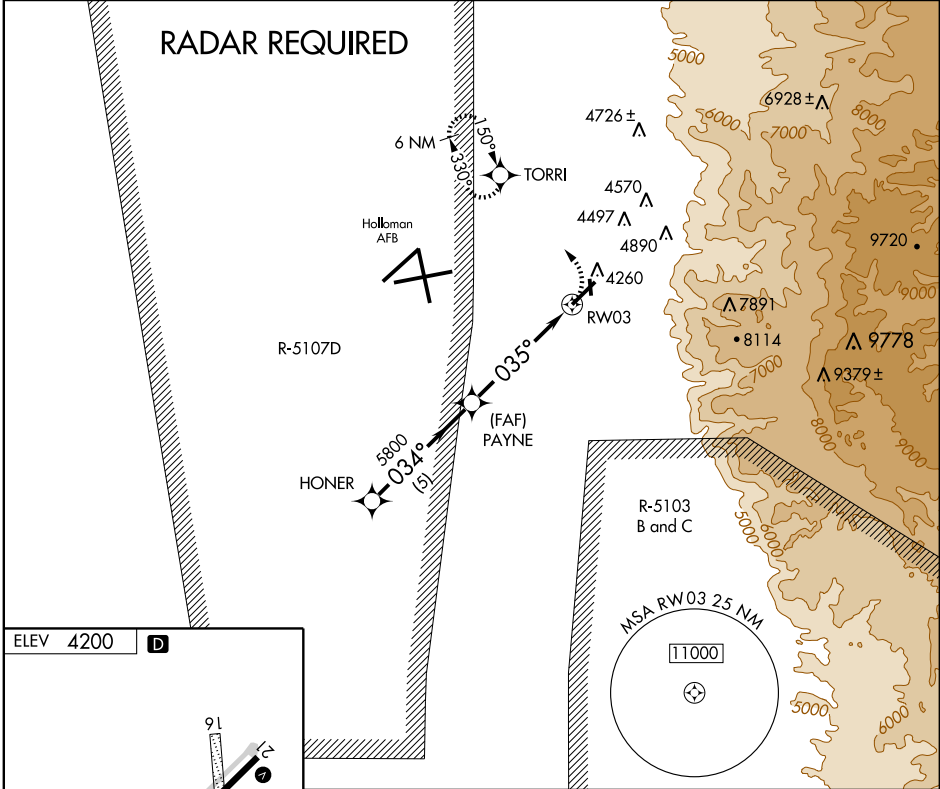
⚠ All civil aircraft require ATC clearance prior to entering Restricted Area 5107D.
⚠ NA Circling NA southeast of Rwy 3-21.
GPS or RNP-0.3 required. DME/DME RNP-0.3 NA.
Not authorized when Holloman Approach Control closed.

MISSED APPROACH: Climbing left turn to 6000 direct TORRI WP and hold.

AWOS-3
127.825

HOLLOMAN APP CON ★
120.6 269.225

UNICOM
122.8 (CTAF) 0



CATEGORY	A	B	C	D
LNAV MDA	4460-1 293 (300-1)			
CIRCLING	4660-1 460 (500-1)	4720-1 520 (600-1)	4720-1½ 520 (600-1½)	4760-2 560 (600-2)

SW-1, 11 MAR 2010 to 08 APR 2010

SW-1, 11 MAR 2010 to 08 APR 2010