

# RNAV (GPS) RWY 3

ALAMOGORDO-WHITE SANDS RGNL (A.I.M)

APP CRS <b>035°</b>	Rwy Idg <b>7006</b>
	TDZE <b>4167</b>
	Apt Elev <b>4200</b>

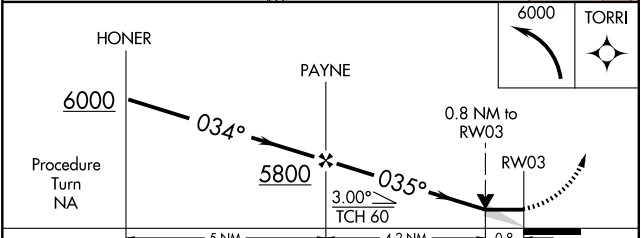
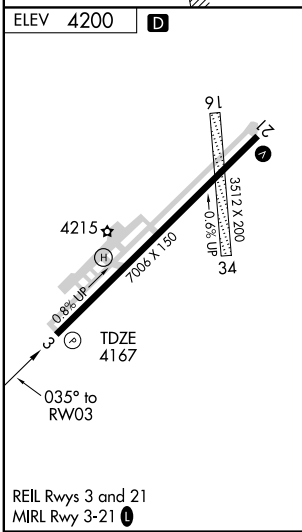
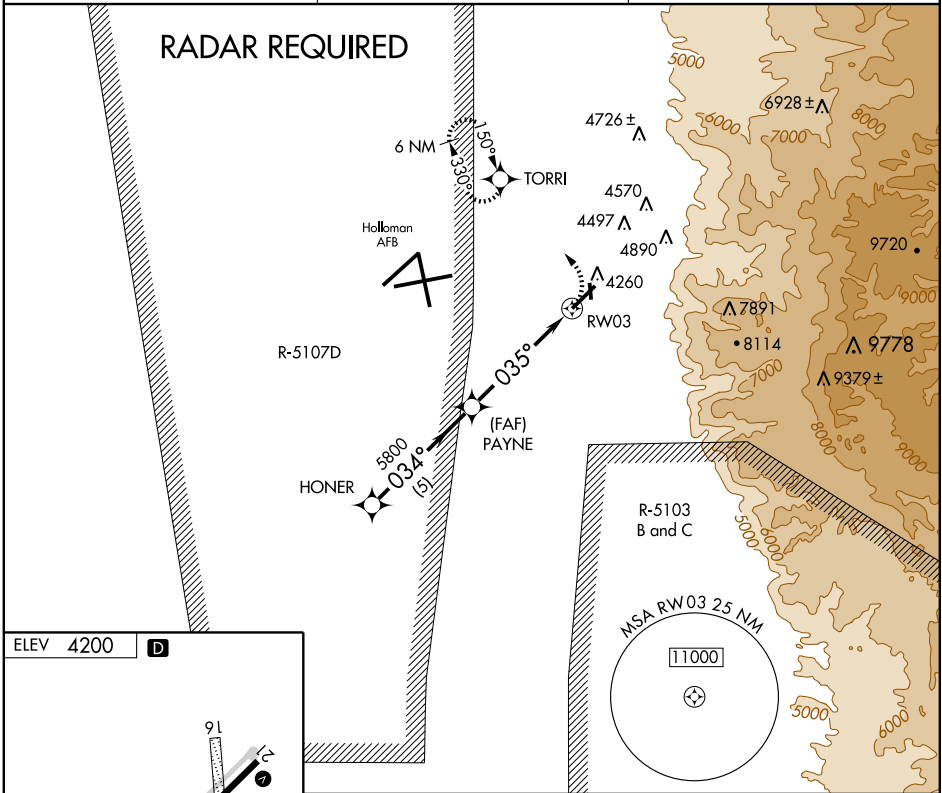
**⚠** All civil aircraft require ATC clearance prior to entering Restricted Area 5107D.  
**⚠ NA** Circling NA southeast of Rwy 3-21.  
 GPS or RNP-0.3 required. DME/DME RNP-0.3 NA.  
 Not authorized when Holloman Approach Control closed.

**MISSED APPROACH:** Climbing left turn to 6000 direct TORRI WP and hold.

AWOS-3  
**127.825**

HOLLOMAN APP CON ★  
**120.6 269.225**

UNICOM  
**122.8 (CTAF) 0**



CATEGORY	A	B	C	D
LNAV MDA	4460-1 293 (300-1)			
CIRCLING	4660-1 460 (500-1)	4720-1 520 (600-1)	4720-1½ 520 (600-1½)	4760-2 560 (600-2)

SW-1, 19 NOV 2009 to 17 DEC 2009

SW-1, 19 NOV 2009 to 17 DEC 2009