

# VOR RWY 3

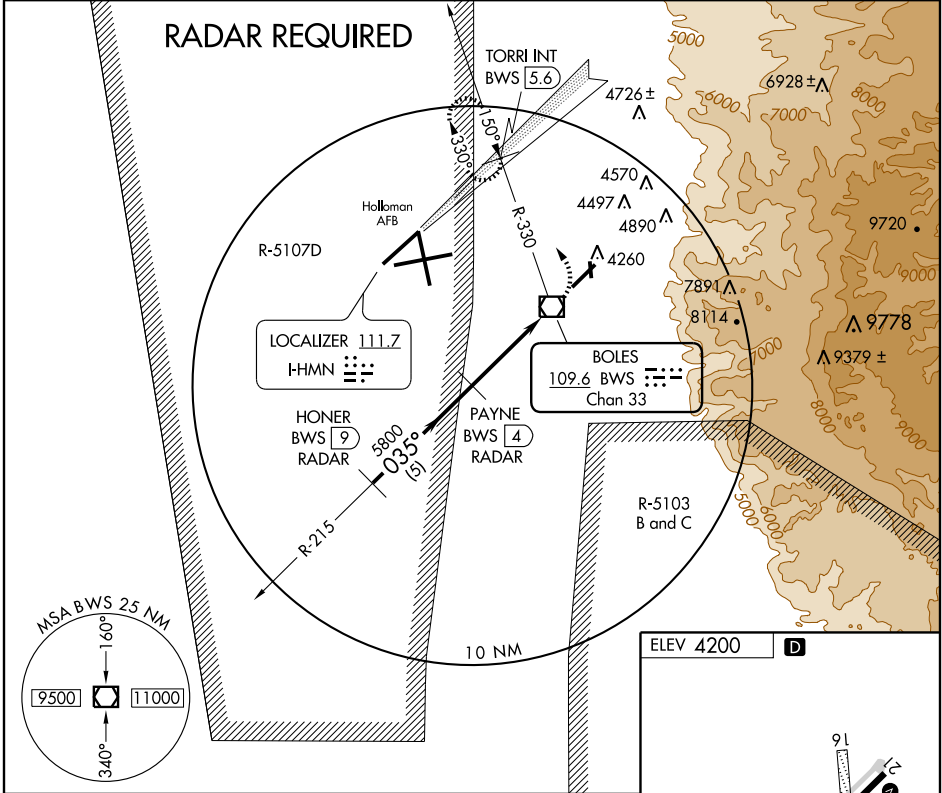
ALAMOGORDO-WHITE SANDS RGNL (A.I.M)

VOR/DME BWS <b>109.6</b> Chan 33	APP CRS <b>035°</b>	Rwy Idg TDZE Apt Elev	<b>7006</b> <b>4167</b> <b>4200</b>
--	------------------------	-----------------------------	---

**▼** All civil aircraft require ATC clearance prior to entering Restricted Area 5107D.  
**▲ NA** Circling NA southeast of Rwy 3-21.  
 RADAR or DME required.  
 Not authorized when Holloman Approach Control closed.

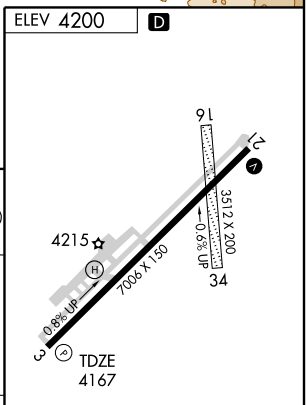
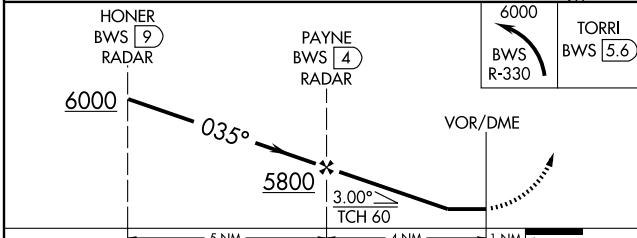
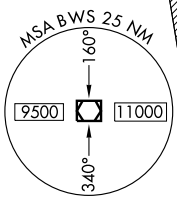
**MISSED APPROACH:** Climbing left turn to 6000 via BWS R-330 to TORRI Int/BWS 5.6 DME and hold.

AWOS-3 <b>127.825</b>	HOLLOMAN APP CON * <b>120.6 269.225</b>	UNICOM <b>122.8 (CTAF) 0</b>
--------------------------	--	---------------------------------



SW-1, 11 MAR 2010 to 08 APR 2010

SW-1, 11 MAR 2010 to 08 APR 2010



CATEGORY	A	B	C	D
S-3	4460-1¼ 293 (300-1¼)			
CIRCLING	4660-1¼ 460 (500-1¼)	4720-1¼ 520 (600-1¼)	4720-1½ 520 (600-1½)	4760-2 560 (600-2)

REIL Rwys 3 and 21  
 MIRL Rwy 3-21 0