

VOR/DME BWS 109.6 Chan 33	APP CRS 035°	Rwy Idg 7006 TDZE 4167 Apt Elev 4200
--	------------------------	---

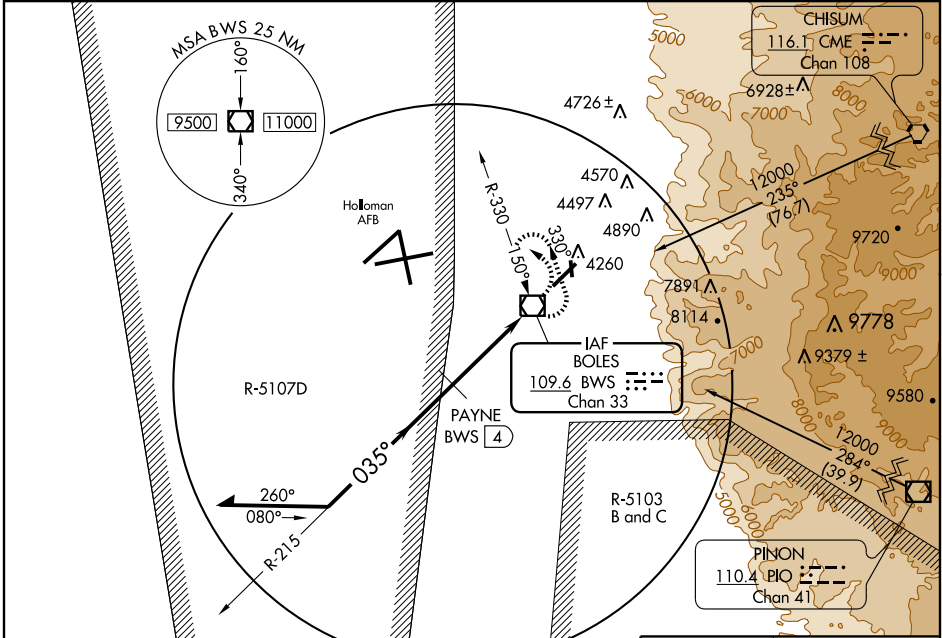
VOR/DME RWY 3

ALAMOGORDO-WHITE SANDS RGNL (A.I.M)

NA All civil aircraft require ATC clearance prior to entering Restricted Area 5107D. Circling NA southeast of Rwy 3-21. Arrivals over BOLES VOR/DME above 12000 descend in the holding pattern not authorized when Holloman Approach Control closed.

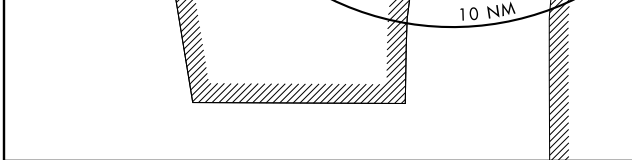
MISSED APPROACH: Climbing left turn to 7000 via BWS R-330 then climbing left turn to 10000 direct BWS VOR/DME and hold.

AWOS-3 127.825	HOLLOMAN APP CON * 120.6 269.225	UNICOM 122.8 (CTAF)
--------------------------	--	-------------------------------

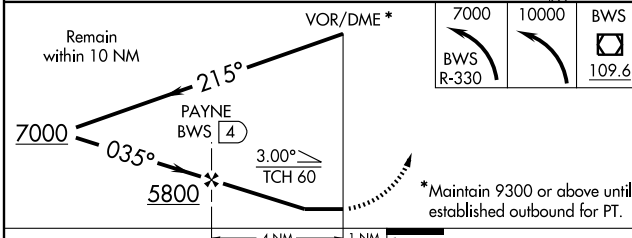
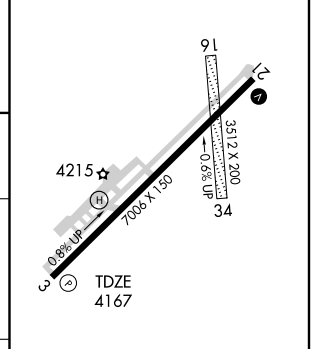


SW-1, 11 MAR 2010 to 08 APR 2010

SW-1, 11 MAR 2010 to 08 APR 2010



ELEV 4200	D
-----------	----------



CATEGORY	A	B	C	D
S-3	4460-1¼ 293 (300-1¼)			
CIRCLING	4660-1¼ 460 (500-1¼)	4720-1¼ 520 (600-1¼)	4720-1½ 520 (600-1½)	4760-2 560 (600-2)

REIL Rwy 3 and 21
MRL Rwy 3-21 **D**