

LOC BC RWY 35

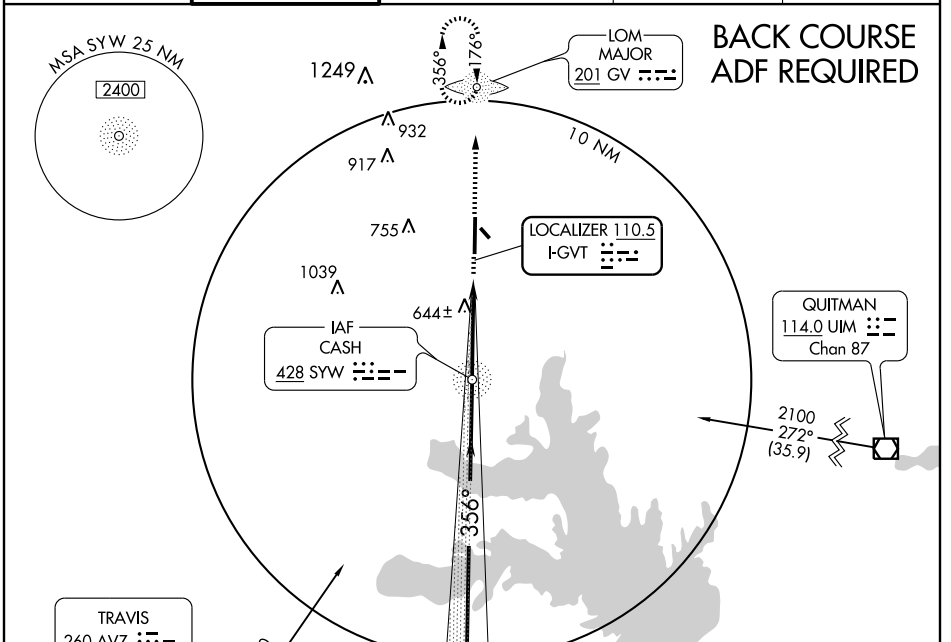
GREENVILLE/MAJORS (GVT)

LOC I-GVT 110.5	APP CRS 356°	Rwy Idg 8030
		TDZE 531
		Apt Elev 535

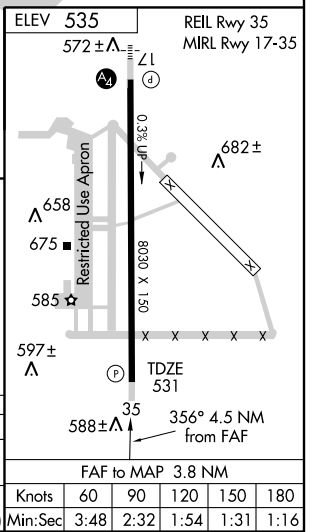
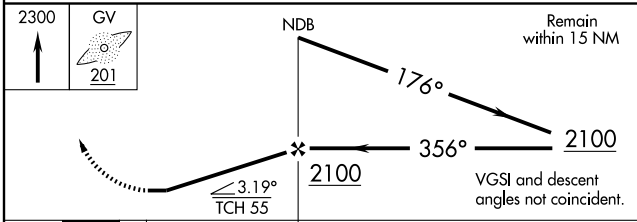
⚠ Visibility reduction by helicopters NA. When local altimeter setting not received, use Terrell altimeter setting and increase all MDAs 80 feet and increase S-35 Cat C, D, and E visibility ¼ mile, circling Cat E visibility ¼ mile.

MISSED APPROACH: Climb to 2300 direct GV LOM and hold.

AWOS-3 133.425	FORT WORTH CENTER 132.85 360.75	MAJORS TOWER* 118.65 (CTAF) 385.425	GND CON 121.7 335.8	UNICOM 122.95
--------------------------	--	--	-------------------------------	-------------------------



Radar required for arrivals at AVZ NDB.



CATEGORY	A	B	C	D	E
S-35	980-1 449 (500-1)		980-1½ 449 (500-1½)	980-1½ 449 (500-1½)	
CIRCLING	1040-1 505 (600-1)		1040-1½ 505 (600-1½)	1100-2 565 (600-2)	1280-2¾ 745 (800-2¾)

FAF to MAP 3.8 NM	Knots	60	90	120	150	180
	Min:Sec	3:48	2:32	1:54	1:31	1:16

SC-2, 19 NOV 2009 to 17 DEC 2009

SC-2, 19 NOV 2009 to 17 DEC 2009