

WAAS CH 86205 W17A	APP CRS 176°	Rwy Idg TDZE Apt Elev	8030 534 535
--	------------------------	-----------------------------	---

RNAV (GPS) RWY 17

GREENVILLE/MAJORS (GVT)

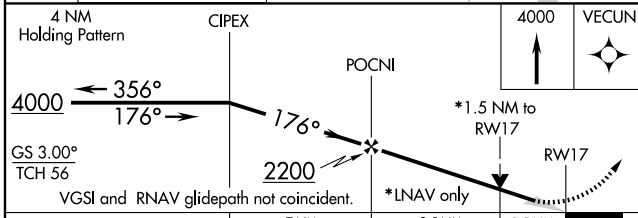
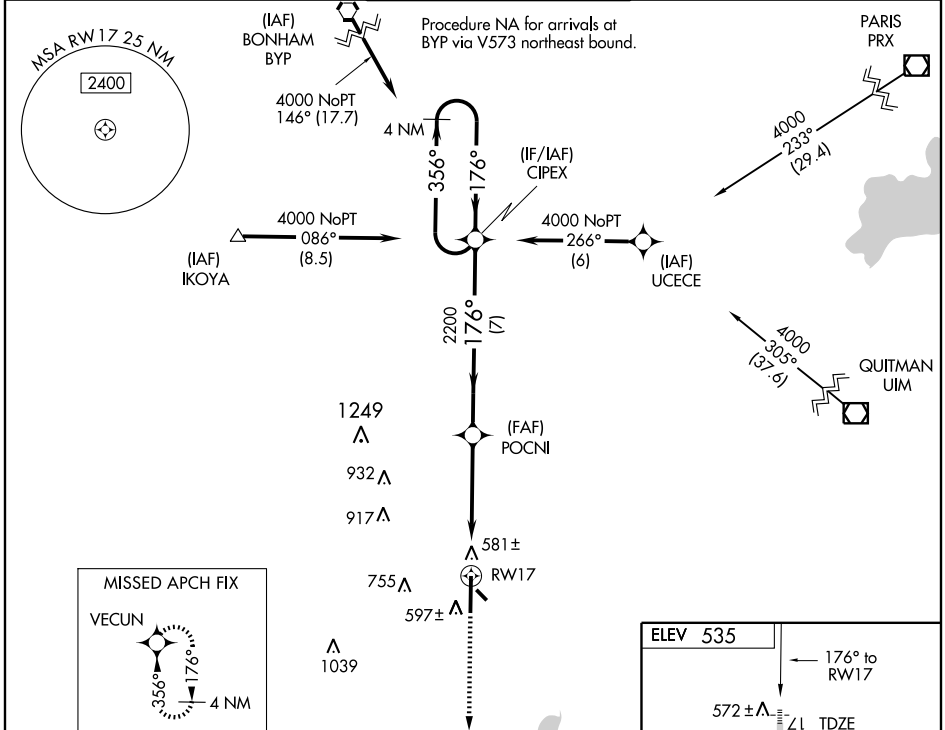
⚠ For uncompensated Baro-VNAV systems, LNAV/VNAV NA below -16°C (4°F) or above 47°C (116°F). DME/DME RNP-0.3 NA. VDP and Baro-VNAV NA when using Terrell altimeter setting. When local altimeter setting not received, use Terrell altimeter setting and increase all DA 64 feet and MDA 80 feet and increase LPV visibility all Cats ¼ mile, LNAV/VNAV Cat A, B, and C visibility ½ mile, Cat D and E visibility ¼ mile and LNAV Cat C and D visibility ¼ mile and Cat E visibility ½ mile and circling Cat C and E visibility ¼ mile. Inoperative table does not apply to LNAV Cat C.

MALS

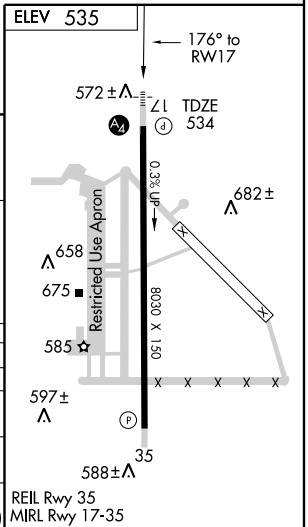


MISSED APPROACH:
Climb to 4000 direct VECUN and hold, continue climb-in hold to 4000.

AWOS-3 133.425	FORT WORTH CENTER 132.85 360.75	MAJORS TOWER * 118.65 (CTAF) 385.425	GND CON 121.7 335.8	UNICOM 122.95
--------------------------	---	--	-------------------------------	-------------------------



CATEGORY	A	B	C	D	E
LPV DA	798-1 264 (300-1)				
LNAV/VNAV DA	849-¾	315 (400-¾)	849-1 315 (400-1)		
LNAV MDA	1060-¾ 526 (600-¾)	1060-1½ 526 (600-1½)	1060-1¾ 526 (600-1¾)		
CIRCLING	1060-1 525 (600-1)	1060-1½ 525 (600-1½)	1100-2 565 (600-2)	1280-2¾ 745 (800-2¾)	



SC-2, 19 NOV 2009 to 17 DEC 2009

SC-2, 19 NOV 2009 to 17 DEC 2009