
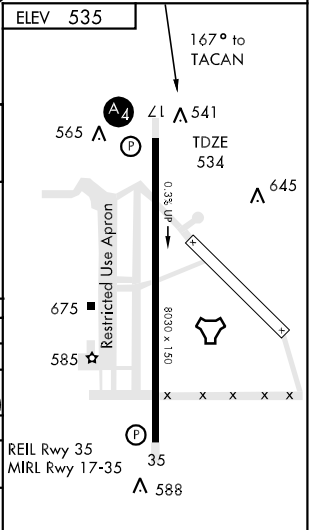
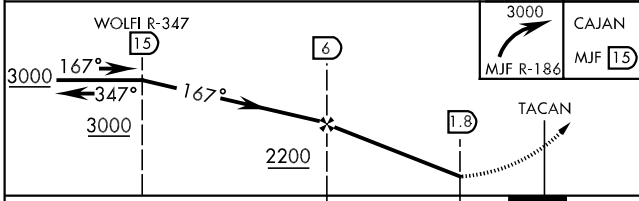
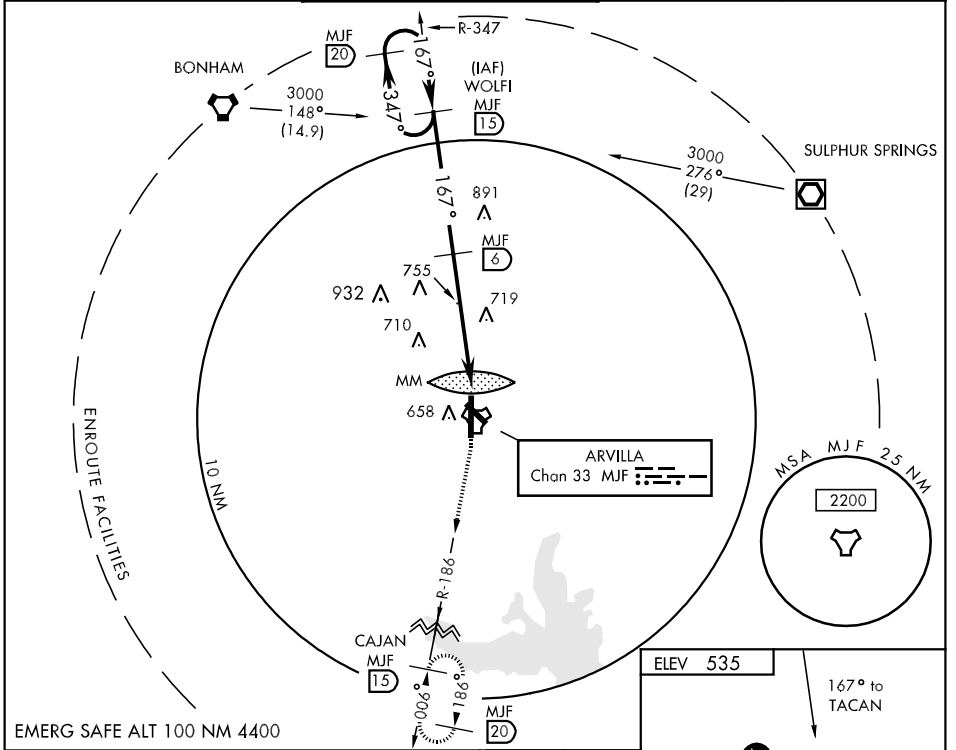


TACAN M/J Chan 33	APCH CRS 167°	Rwy Idg TDZE Arpt Elev 8030 534 535	AL-5138 [USAF]	GREENVILLE/ MAJORS (KGVY)
-----------------------------	-------------------------	---	----------------	---------------------------

<p>▼ * When ALS inop, increase CAT DE vis to 1¼ miles. ** When ALS inop, increase CAT D vis to 2 miles, CAT E vis to 2¼ miles. ▲ NA When control tower closed, use Dallas-Love Field altimeter setting.</p>	<p>MALS </p>	<p>MISSED APPROACH: Climb to 3000 via M/J TACAN R-186 to CAJAN 15 DME and hold.</p>
---	--	---

FORT WORTH CENTER 132.85 360.75	MAJORS TOWER * 118.65 (CTAF) 0 385.425	GND CON 121.7 335.8	UNICOM 122.95
---	--	-------------------------------	-------------------------



CATEGORY	A	B	C	D	E
S-17 *	1060-1¼	526 (600-1¼)		1060-1½	526 (600-1½)
CIRCLING	1060-1¼	525 (600-1¼)	1060-1½	1100-2	1280-2¾
			525 (600-1½)	565 (600-2)	745 (800-2¾)
DALLAS-LOVE ALTIMETER SETTING MINIMUMS					
S-17 **	1160-1¼	626 (700-1¼)	1160-1½	1160-1¾	1160-2
CIRCLING	1160-1¼	625 (700-1¼)	626 (700-1½)	626 (700-1¾)	626 (700-2)
			1160-1¾	1180-2	1380-3
			625 (700-1¾)	645 (700-2)	845 (900-3)

SC-2, 11 MAR 2010 to 08 APR 2010

SC-2, 11 MAR 2010 to 08 APR 2010