

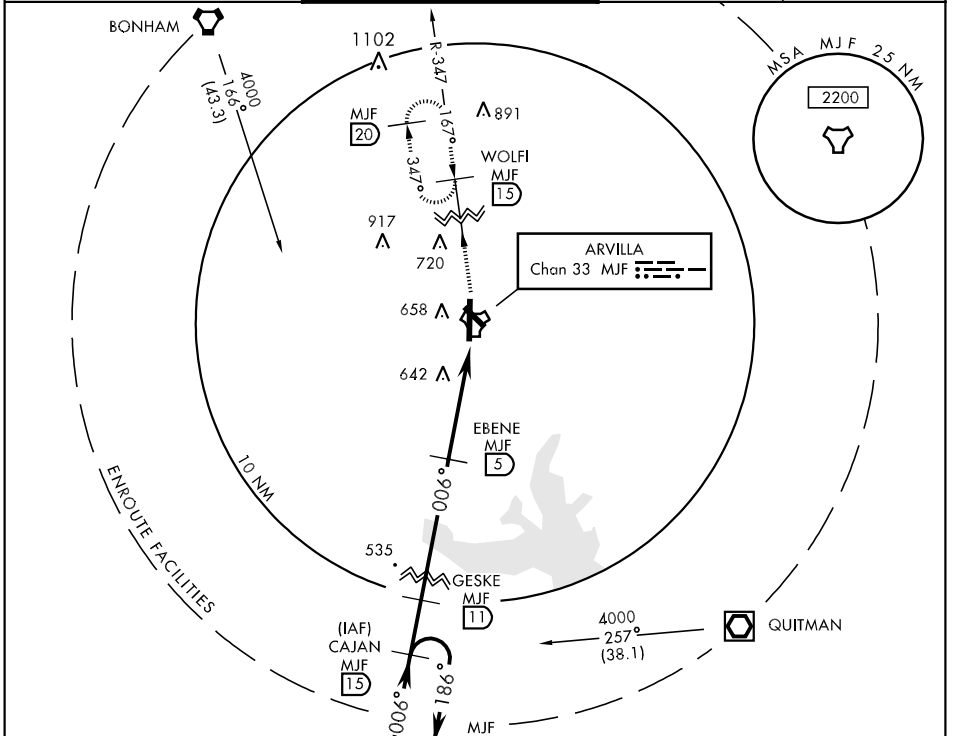
TACAN MUF Chan 33	APCH CRS 006°	Rwy Idg TDZE Arpt Elev 8030 531 535
-----------------------------	-------------------------	---

AL-5138 [USAF]

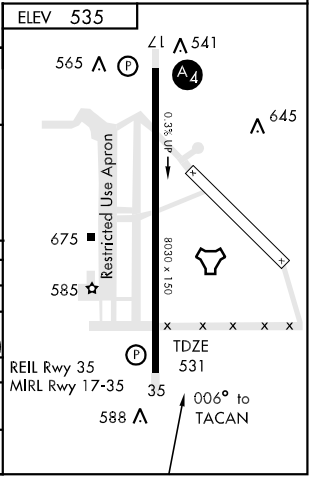
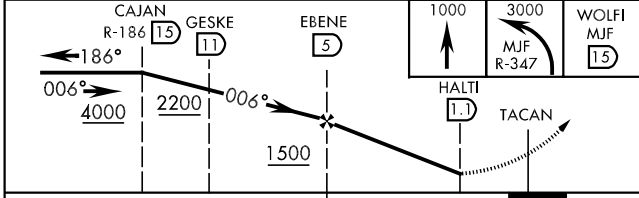
GREENVILLE/MAJORS (KGVY)

NA When control tower closed, use Dallas-Love Field altimeter setting. **MISSED APPROACH:** Climb to 1000 then climbing left turn to 3000 via MJF TACAN R-347 to WOLFI 15 DME and hold.

FORT WORTH CENTER 132.85 360.75	MAJORS TOWER ★ 118.65 (CTAF) 0 385.425	GND CON 121.7 335.8	UNICOM 122.95
---	--	-------------------------------	-------------------------



EMERG SAFE ALT 100 NM 4000 R-186 →



CATEGORY	A	B	C	D	E
S-35	900-1	369 (400-1)		900-1½ 369 (400-1½)	
CIRCLING	1040-1 505 (600-1)		1040-1½ 505 (600-1½)	1100-2 565 (600-2)	1280-2¾ 745 (800-2¾)
DALLAS-LOVE FIELD ALTIMETER SETTING MINIMUMS					
S-35	1000-1 469 (500-1)		1000-1¼ 469 (500-1¼)	1000-1½ 469 (500-1½)	1000-1¾ 469 (500-1¾)
CIRCLING	1140-1 605 (700-1)		1140-1¾ 605 (700-1¾)	1180-2 645 (700-2)	1380-3 845 (900-3)

SC-2, 19 NOV 2009 to 17 DEC 2009

SC-2, 19 NOV 2009 to 17 DEC 2009