

# VOR RWY 17

STILLWATER RGNL (SWO)

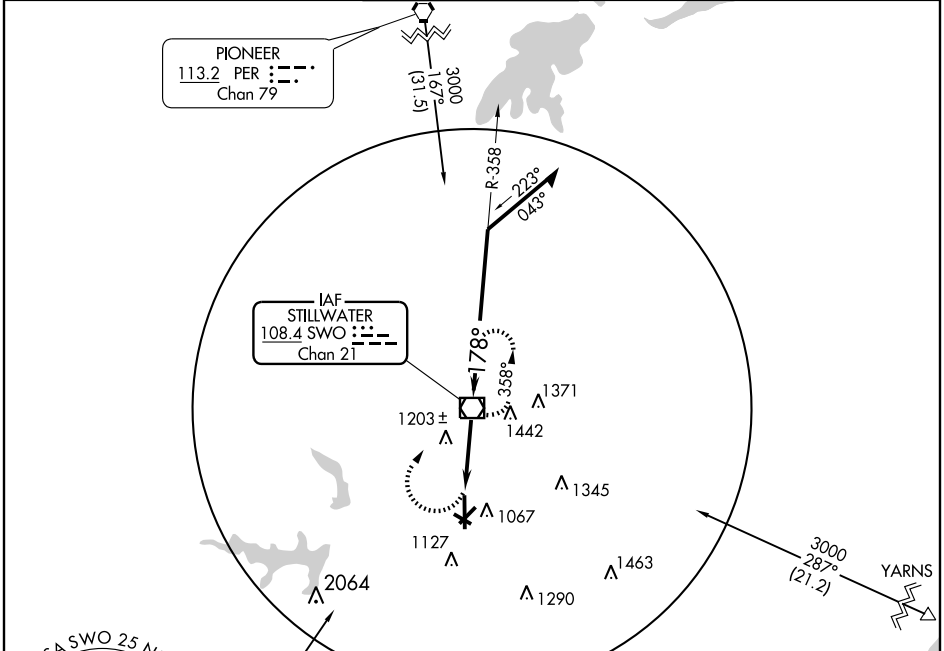
VOR/DME SWO <b>108.4</b> Chan <b>21</b>	APP CRS <b>178°</b>	Rwy Idg TDZE Apt Elev <b>7401</b> <b>1000</b> <b>1000</b>
---	------------------------	--

**⚠** If local altimeter setting not received, use Ponca City Rgnl altimeter setting and increase all MDA's 80 feet. VDP NA with Ponca City altimeter setting. For inoperative MALSRS increase S-17 Cats A/B visibility to 1 mile.



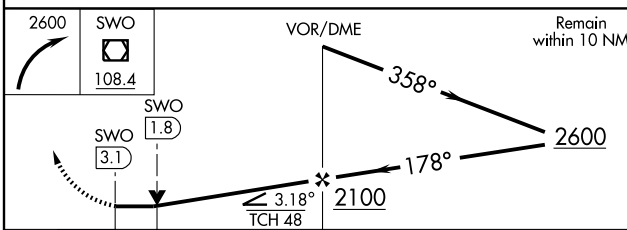
**MISSED APPROACH:** Climbing right turn to 2600 direct SWO VOR/DME and hold.

ASOS <b>135.725</b>	KANSAS CITY CENTER <b>128.3 291.7</b>	STILLWATER TOWER ★ <b>125.35 (CTAF)</b> <b>0</b>	GND CON <b>121.6</b>	UNICOM <b>122.95</b>
------------------------	--	---	-------------------------	-------------------------



SC-1, 11 MAR 2010 to 08 APR 2010

SC-1, 11 MAR 2010 to 08 APR 2010



CATEGORY	A	B	C	D
S-17	1460- $\frac{3}{4}$	460 (500- $\frac{3}{4}$ )		1460-1 460 (500-1)
CIRCLING	1460-1	460 (500-1)	1460-1 $\frac{1}{2}$ 460 (500-1 $\frac{1}{2}$ )	1560-2 560 (600-2)

