

RNAV (GPS) RWY 17

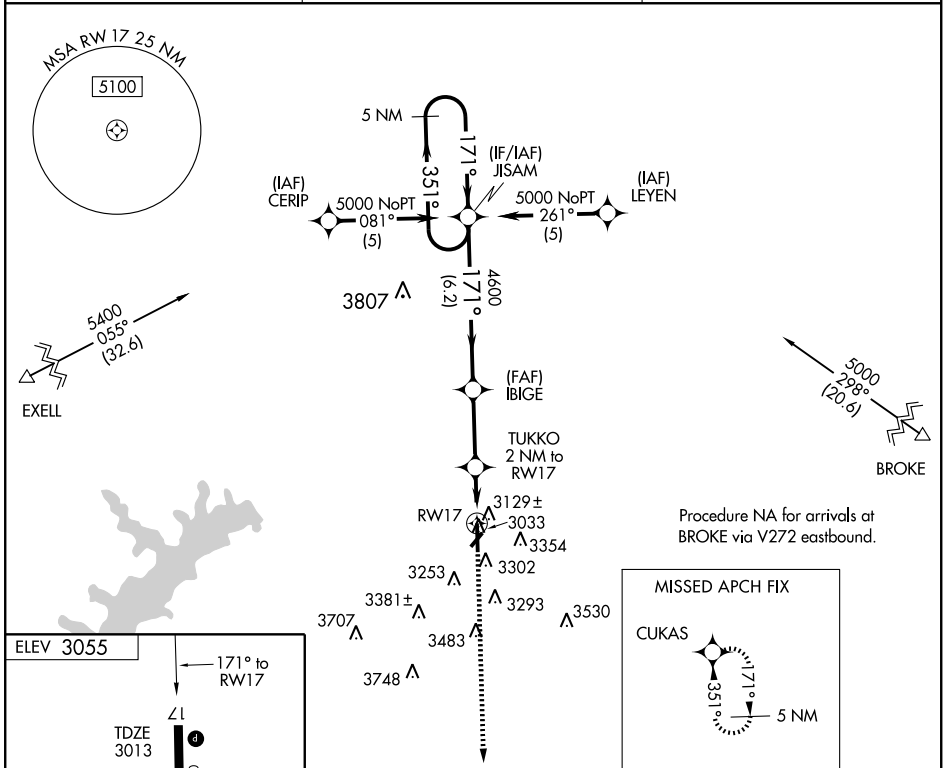
BORGER/HUTCHINSON COUNTY (BGD)

APP CRS	Rwy Idg	6300
171°	TDZE	3013
	Apt Elev	3055

▼ When local altimeter setting not received, use Pampa altimeter setting; increase all MDA 80 feet, LNAV and circling Cat C and D visibilities ¼ mile. VDP NA when using Pampa altimeter setting. DME/DME RNP-0.3 NA.

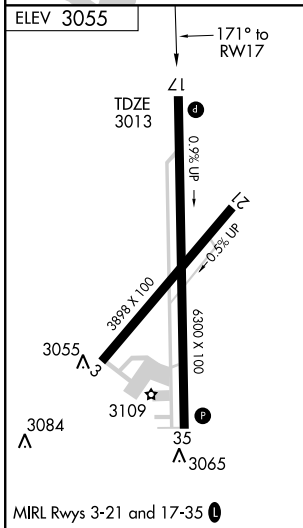
MISSED APPROACH: Climb to 5100 direct CUKAS and hold.

ASOS 118.325	AMARILLO APP CON * 119.5 307.0	UNICOM 123.0 (CTAF) 0
------------------------	--	---------------------------------



SC-2, 11 MAR 2010 to 08 APR 2010

SC-2, 11 MAR 2010 to 08 APR 2010



5100	CUKAS	TUKKO 2 NM to RWY 17	IBIGE	JISAM	5 NM Holding Pattern
		1.4 NM to RWY 17	≤ 3.04° TCH 58	3680	4600
		1.4 NM	0.6 NM	2.8 NM	6.2 NM
CATEGORY	A	B	C	D	
LNAV MDA	3500-1	487 (500-1)	3500-1¼ 487 (500-1¼)	3500-1½ 487 (500-1½)	
CIRCLING	3620-1 565 (600-1)	3660-1 605 (700-1)	3660-1¾ 605 (700-1¾)	3660-2 605 (700-2)	