

ILS or LOC RWY 18

SPRINGDALE MUNI (ASG)

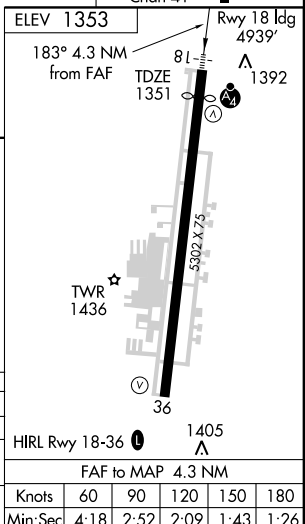
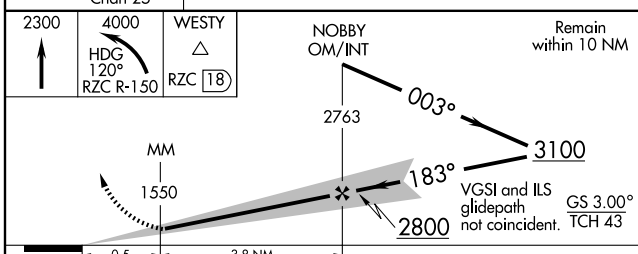
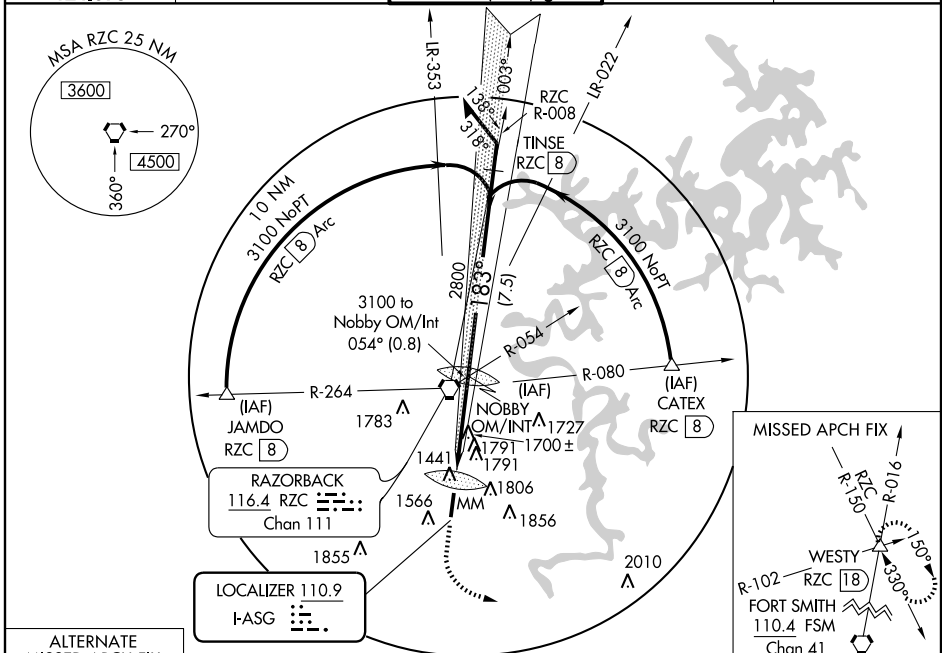
LOC I-ASG 110.9	APP CRS 183°	Rwy ldg 4939 TDZE 1351 Apt Elev 1353
---------------------------	------------------------	--

NA If local altimeter setting not received, use Northwest Arkansas Muni altimeter setting, and increase all DAs/MDAs 40 feet. Inoperative table does not apply to S-ILS 18, and S-LOC 18 Cat. C. Circling NA east of runway 18-36.

MALSF

MISSED APPROACH: Climb to 2300 then climbing left turn to 4000 via heading 120° and RZC R-150 to Westy Int/RZC 18 DME and hold.

AWOS-3 124.675	RAZORBACK APP CON* 126.6 305.2	SPRINGDALE TOWER* 118.2 (CTAF) 0	GND CON 121.6	UNICOM 122.95
--------------------------	--	---	-------------------------	-------------------------



CATEGORY	A	B	C	D
S-ILS 18	1551- $\frac{3}{4}$		200 (200- $\frac{3}{4}$)	
S-LOC 18	1960- $\frac{3}{4}$ 609 (700- $\frac{3}{4}$)		1960-1 $\frac{3}{4}$ 609 (700-1 $\frac{3}{4}$)	1960-2 609 (700-2)
CIRCLING	1960-1 607 (700-1)		1960-1 $\frac{3}{4}$ 607 (700-1 $\frac{3}{4}$)	1960-2 607 (700-2)

SC-1, 11 MAR 2010 to 08 APR 2010

SC-1, 11 MAR 2010 to 08 APR 2010