

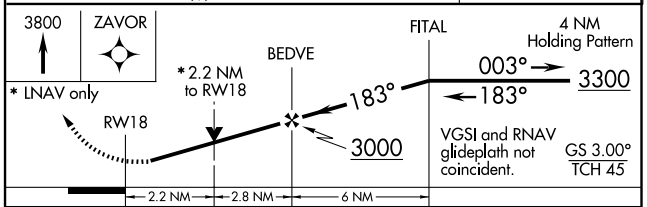
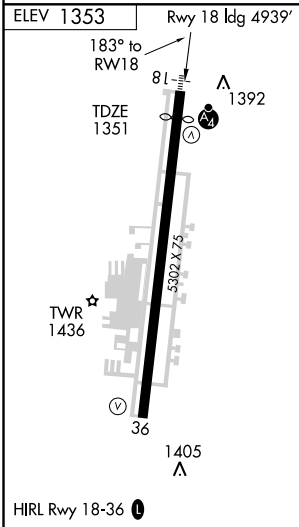
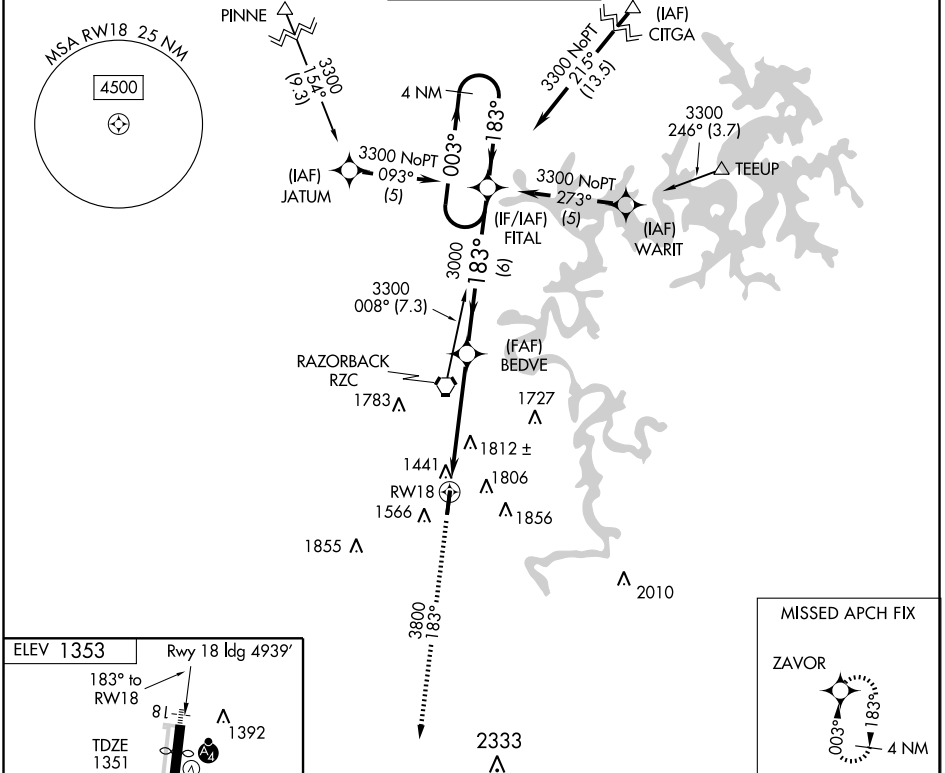
RNAV (GPS) RWY 18

SPRINGDALE MUNI (ASG)

WAAS Ch 70312 W18A	APP CRS 183°	Rwy Idg 4939 TDZE 1351 Apt Elev 1353
--	------------------------	---

<p>▼ DME/DME RNP-0.3 NA. Circling NA east of rwy 18-36. If local altimeter setting not received, use Fayetteville/Drake Field altimeter setting: increase DA to 1681 feet; increase all MDAs 40 feet. VDP NA when using Fayetteville/Drake Field altimeter setting. Inoperative table does not apply to LPV.</p> <p>▲ NA</p>	<p>MALSF </p>	<p>MISSED APPROACH: Climb to 3800 direct ZAVOR and hold.</p>
--	--------------------------	---

AWOS-3 124.675	RAZORBACK APP CON * 126.6 305.2	SPRINGDALE TOWER * 118.2 (CTAF)	GND CON 121.6	UNICOM 122.95
--------------------------	---	---	-------------------------	-------------------------



CATEGORY	A	B	C	D
LPV DA	1642-1 291 (300-1)			
LNAV/VNAV DA	NA			
LNAV MDA	2080-1	729 (800-1)	2080-2 729 (800-2)	2080-2 1/4 729 (800-2 1/4)
CIRCLING	2080-1	727 (800-1)	2080-2 727 (800-2)	2080-2 1/4 727 (800-2 1/4)

SC-1, 11 MAR 2010 to 08 APR 2010

SC-1, 11 MAR 2010 to 08 APR 2010