

# RNAV (GPS) RWY 5

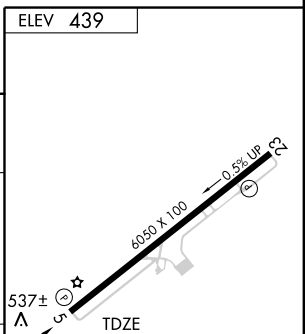
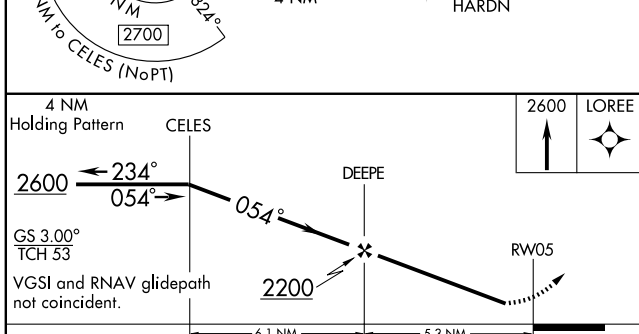
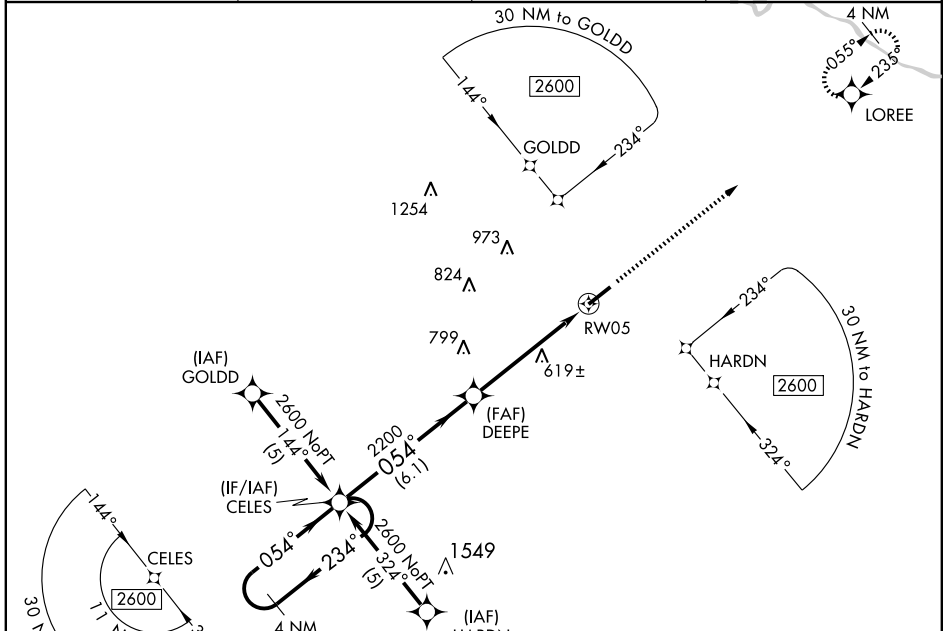
MADISONVILLE MUNI (2I0)

WAAS CH <b>82512</b> <b>W05A</b>	APP CRS <b>054°</b>	Rwy Idg <b>6050</b> TDZE <b>439</b> Apt Elev <b>439</b>
--	------------------------	---

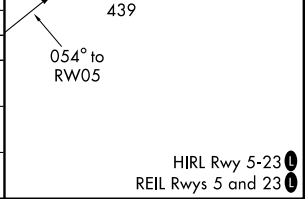
For uncompensated Baro-VNAV systems, LNAV/VNAV NA below -15°C (5°F) or above 48°C (118°F). DME/DME RNP-0.3 NA. Visibility reduction by helicopters NA. When local altimeter setting not received, use Evansville Rgnl altimeter setting and increase all DA 99 feet, and all MDA 100 feet, increase LPV and LNAV/VNAV all Cats. and LNAV Cats. C and D visibility ¼ mile. Baro VNAV NA when using Evansville Rgnl altimeter setting.

**MISSED APPROACH:**  
Climb to 2600 direct LOREE and hold.

AWOS-3 <b>126.475</b>	EVANSVILLE APP CON * <b>126.4 226.4</b>	CLNC DEL <b>120.1</b>	UNICOM <b>122.7 (CTAF) 0</b>
--------------------------	--	--------------------------	---------------------------------



CATEGORY	A	B	C	D
LPV DA		775-1¼	336 (400-1¼)	
LNAV/VNAV DA		807-1¼	368 (400-1¼)	
LNAV MDA	880-1	441 (500-1)	880-1¼ 441 (500-1¼)	880-1½ 441 (500-1½)
CIRCLING	880-1 441 (500-1)	900-1 461 (500-1)	900-1½ 461 (500-1½)	1000-2 561 (600-2)



SE-1, 11 MAR 2010 to 08 APR 2010

SE-1, 11 MAR 2010 to 08 APR 2010