

VORTAC CCT <b>109.8</b> Chan 35	APP CRS <b>259°</b>	Rwy Idg <b>6050</b> TDZE <b>418</b> Apt Elev <b>439</b>
---------------------------------------	------------------------	---

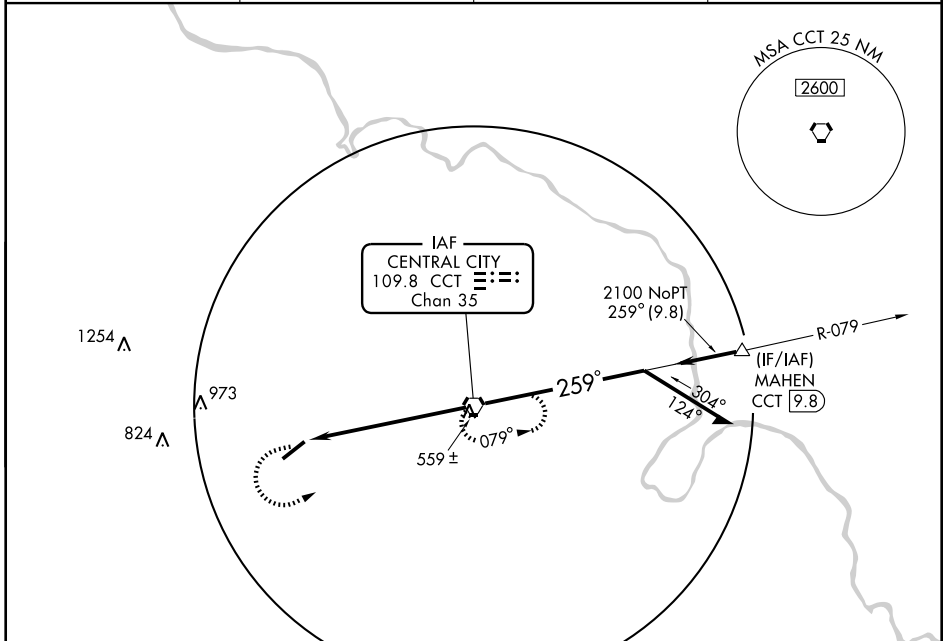
# VOR RWY 23

MADISONVILLE MUNI (2I0)

**NA** Visibility reduction by helicopters NA. When local altimeter setting not received, use Evansville Rgnl altimeter setting and increase all MDA 100 feet, and increase S-23 Cats. C and D visibility ¼ mile.

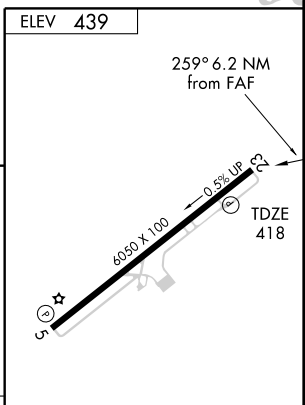
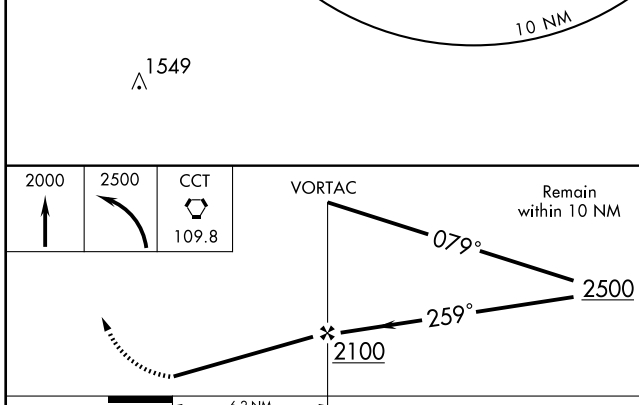
**MISSED APPROACH:** Climb to 2000 then climbing left turn 2500 direct CCT VORTAC and hold.

AWOS-3 <b>126.475</b>	EVANSVILLE APP CON ★ <b>126.4 226.4</b>	CLNC DEL <b>120.1</b>	UNICOM <b>122.7 (CTAF) 0</b>
--------------------------	--	--------------------------	---------------------------------



SE-1, 11 MAR 2010 to 08 APR 2010

SE-1, 11 MAR 2010 to 08 APR 2010



CATEGORY	A	B	C	D
S-23	820-1	402 (400-1)	820-1¼	402 (400-1¼)
CIRCLING	880-1 441 (500-1)	900-1 461 (500-1)	900-1½ 461 (500-1½)	1000-2 561 (600-2)

HIRL Rwy 5-23 0  
REIL Rws 5 and 23 0

FAF to MAP 6.2 NM					
Knots	60	90	120	150	180
Min:Sec	6:12	4:08	3:06	2:29	2:04