

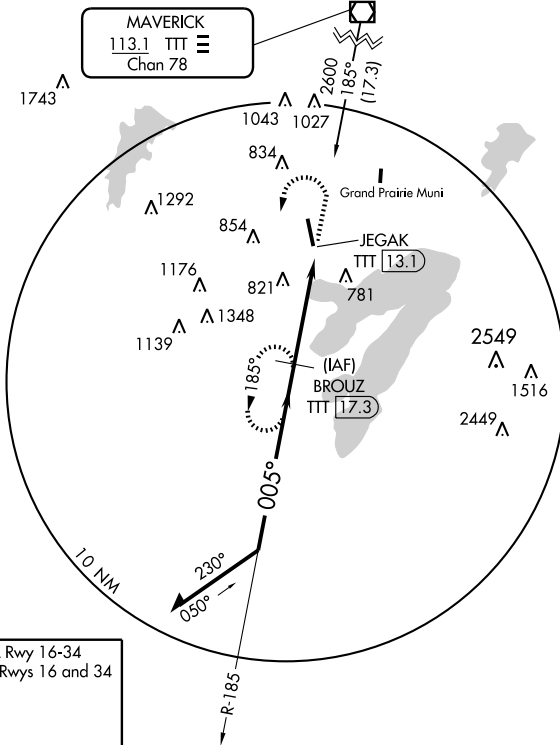
VOR/DME TTT 113.1 Chan 78	APP CRS 005°	Rwy Idg 6080 TDZE 619 Apt Elev 631
---	------------------------	---

VOR/DME RWY 34

ARLINGTON MUNI (GKY)

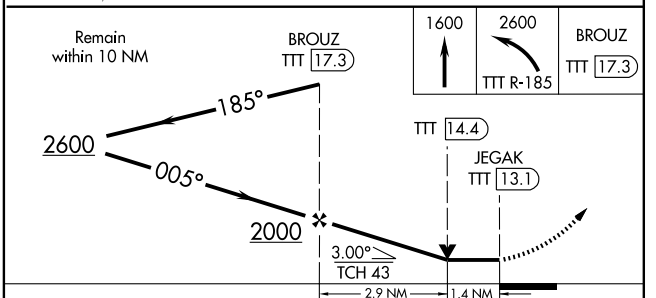
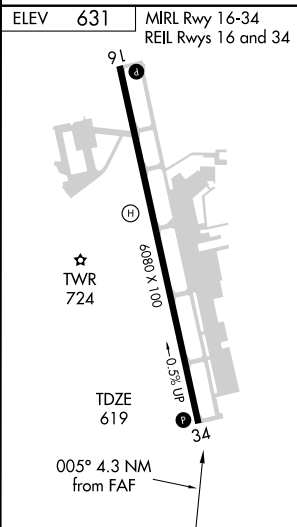
▽ If local altimeter setting not received, use Grand Prairie Muni altimeter setting. **▲** MISSED APPROACH: Climb to 1600 then climbing left turn to 2600 via TTT R-185 to BROUZ/17.3 DME and hold.

ASOS 127.375	REGIONAL APP CON 135.975 379.9	ARLINGTON TOWER ★ 128.625	GND CON 121.875	CLNC DEL 118.85 (When tower closed)	CTAF 128.625 0
------------------------	--	-------------------------------------	---------------------------	--	---------------------------------



SC-2, 19 NOV 2009 to 17 DEC 2009

SC-2, 19 NOV 2009 to 17 DEC 2009



CATEGORY	A	B	C	D
S-34	1080-1 461 (500-1)		1080-1¼ 461 (500-1¼)	NA
CIRCLING	1080-1 449 (500-1)	1100-1 469 (500-1)	1100-1½ 469 (500-1½)	NA