

HOPKINSVILLE, KENTUCKY

AL-5191 (FAA)

NDB RWY 26

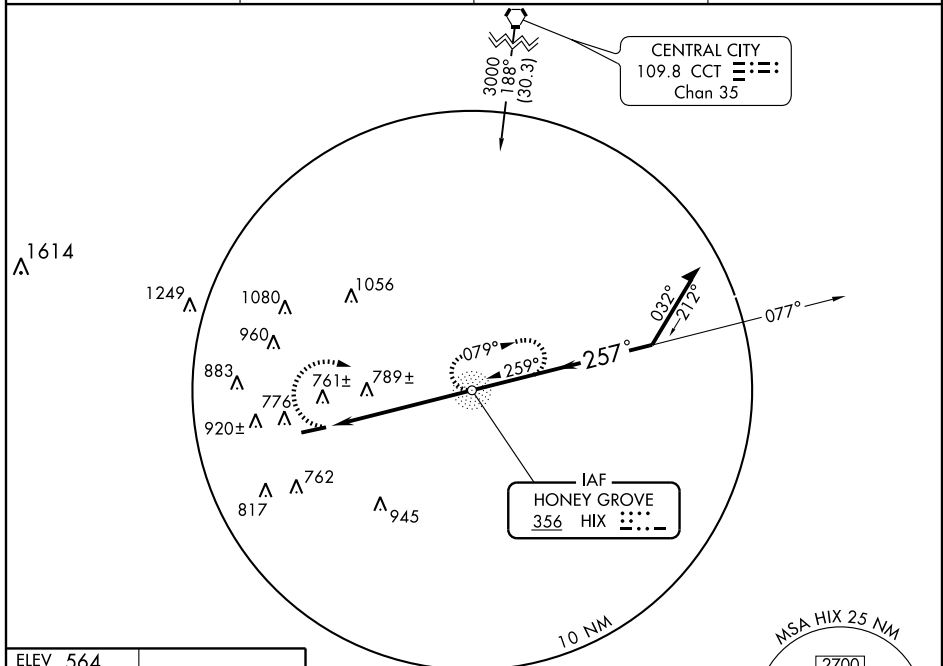
HOPKINSVILLE-CHRISTIAN COUNTY (HVC)

NDB HIX 356	APP CRS 257°	Rwy Idg 5505
		TDZE 564
		Apt Elev 564

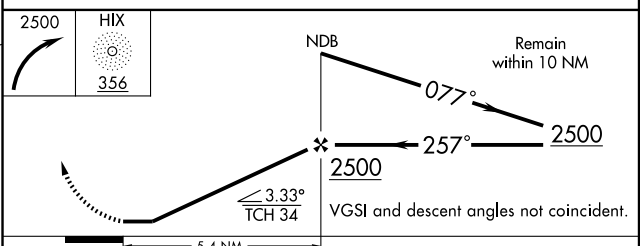
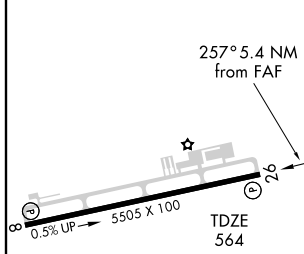
NA Visibility reduction by helicopters NA. When local altimeter setting not received, use Clarksville altimeter setting and increase all MDA 40 feet, and increase Circling Cat. C and D visibility ¼ mile.

MISSED APPROACH: Climbing right turn to 2500 direct HIX NDB and hold.

AWOS-3 132.575	CAMPBELL APP CON 118.1 269.525	CLNC DEL 120.9	UNICOM 122.8 (CTAF) 0
--------------------------	--	--------------------------	---------------------------------



ELEV 564



MIRL Rwy 8-26
REIL Rws 8 and 26

FAF to MAP 5.4 NM

Knots	60	90	120	150	180
Min:Sec	5:24	3:36	2:42	2:10	1:48

CATEGORY	A	B	C	D
S-26	1100-1	536 (600-1)	1100-1½ 536 (600-1½)	1100-1¾ 536 (600-1¾)
CIRCLING	1140-1	576 (600-1)	1280-2 716 (800-2)	1280-2¼ 716 (800-2¼)

HOPKINSVILLE, KENTUCKY
Amdt 7 09183

HOPKINSVILLE-CHRISTIAN COUNTY (HVC)
36° 51'N-87° 27'W
NDB RWY 26

SE-1, 19 NOV 2009 to 17 DEC 2009

SE-1, 19 NOV 2009 to 17 DEC 2009