

RNAV (GPS) RWY 26

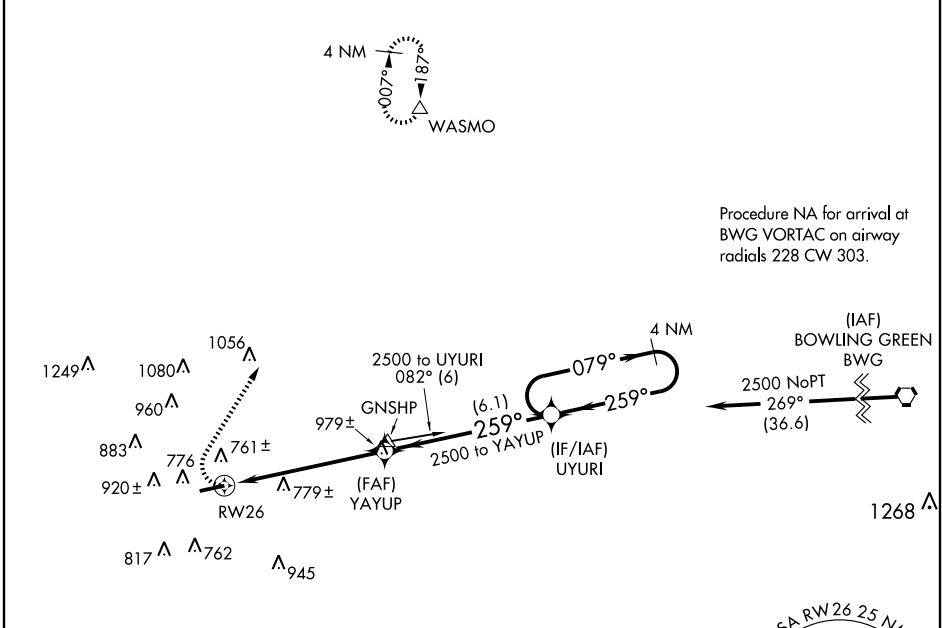
HOPKINSVILLE-CHRISTIAN COUNTY (HVC)

APP CRS	Rwy Idg	5505
259°	TDZE	564
	Apt Elev	564

NA DME/DME RNP-0.3 NA. Visibility reduction by helicopters NA. When local altimeter setting not received, use Clarksville altimeter setting and increase all MDA 40 feet, increase LNAV and Circling Cat. C and D visibility ¼ mile.

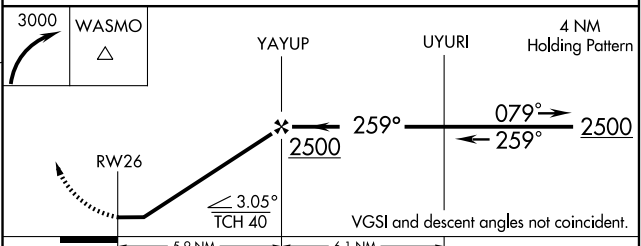
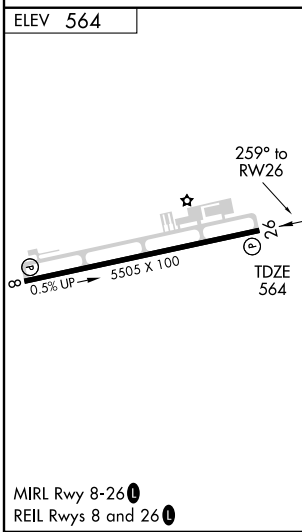
MISSED APPROACH: Climbing right turn to 3000 direct WASMO and hold.

AWOS-3 132.575	CAMPBELL APP CON 118.1 269.525	CLNC DEL 120.9	UNICOM 122.8 (CTAF) 0
--------------------------	--	--------------------------	---------------------------------



SE-1, 19 NOV 2009 to 17 DEC 2009

SE-1, 19 NOV 2009 to 17 DEC 2009



CATEGORY	A	B	C	D
LNAV MDA	1040-1	476 (500-1)	1040-1¼ 476 (500-1¼)	1040-1½ 476 (500-1½)
CIRCLING	1140-1	576 (600-1)	1280-2 716 (800-2)	1280-2¼ 716 (800-2¼)