

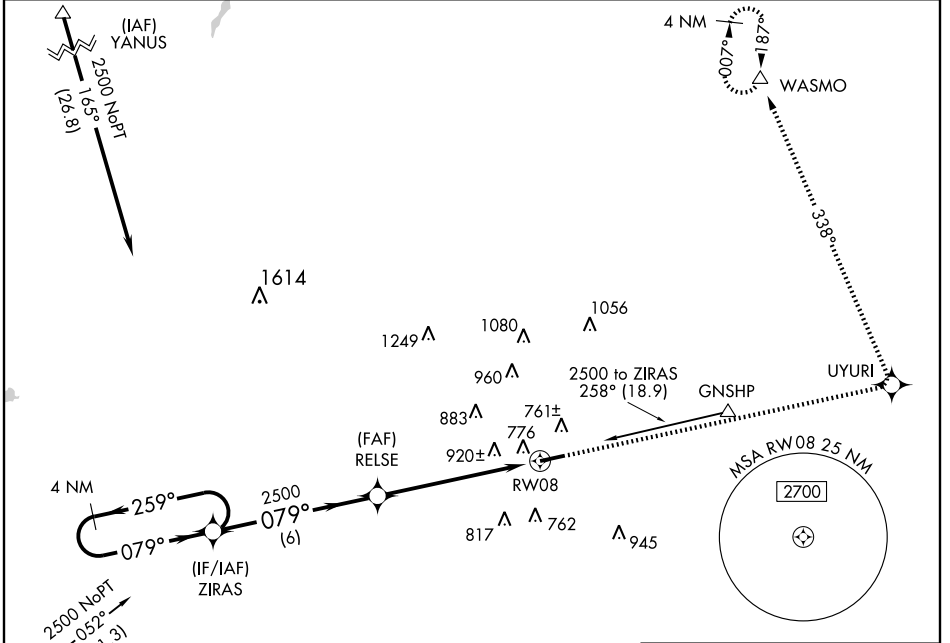
RNAV (GPS) RWY 8
HOPKINSVILLE-CHRISTIAN COUNTY (HVC)

APP CRS 079°	Rwy Idg 5505
	TDZE 540
	Apt Elev 564

▼ DME/DME RNP-0.3 NA Visibility reduction by helicopters NA.
▲ NA When local altimeter setting not received, use Clarksville altimeter setting and increase all MDA 40 feet and Circling Cat. C and D visibility ¼ mile.

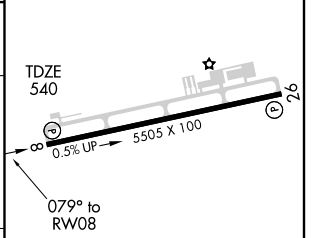
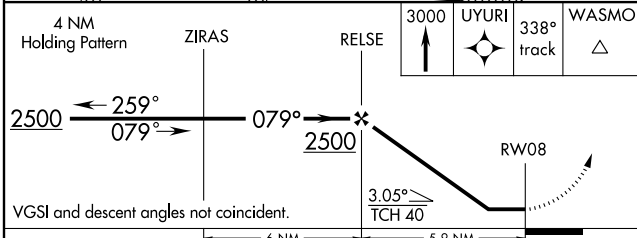
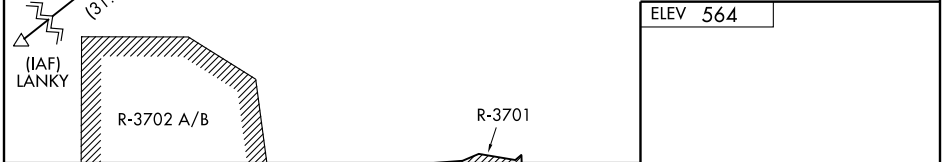
MISSED APPROACH: Climb to 3000 direct UYURI and left turn via 338° track to WASMO and hold.

AWOS-3 132.575	CAMPBELL APP CON 118.1 269.525	CLNC DEL 120.9	UNICOM 122.8 (CTAF) 0
--------------------------	--	--------------------------	---------------------------------



SE-1, 19 NOV 2009 to 17 DEC 2009

SE-1, 19 NOV 2009 to 17 DEC 2009



	6 NM		5.9 NM	
CATEGORY	A	B	C	D
LNAV MDA	1220-1	680 (700-1)	1220-2 680 (700-2)	1220-2¼ 680 (700-2¼)
CIRCLING	1220-1	656 (700-1)	1280-2 716 (800-2)	1280-2¼ 716 (800-2¼)

MIRL Rwy 8-26
 REIL Rwy 8 and 26