

LOC RWY 26

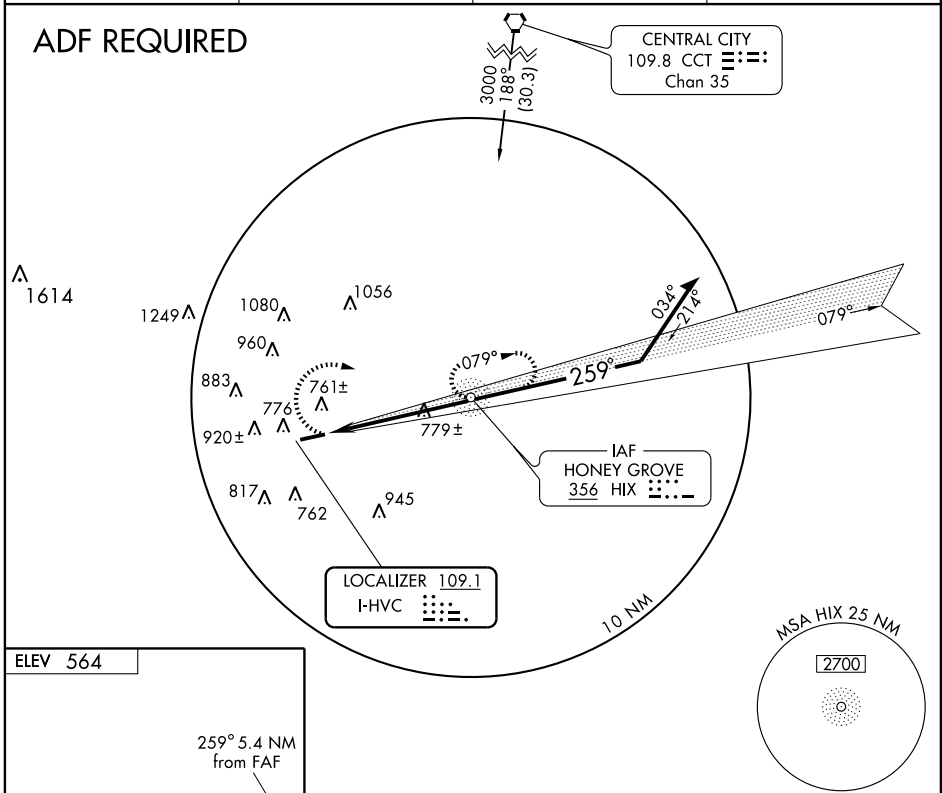
HOPKINSVILLE-CHRISTIAN COUNTY (HVC)

LOC I-HVC 109.1	APP CRS 259°	Rwy Idg 5505
		TDZE 564
		Apt Elev 564

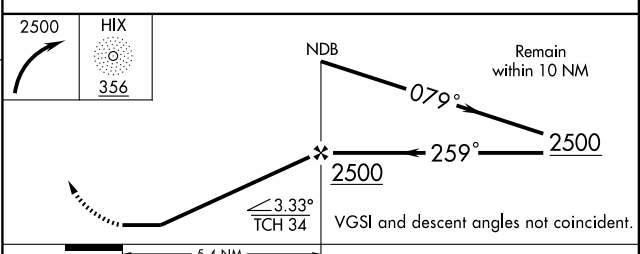
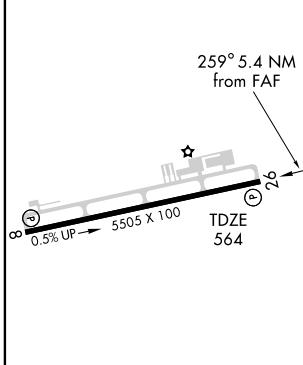
ADF REQUIRED. Visibility reduction by helicopters NA.
 When local altimeter setting not received, use Clarksville altimeter setting and increase all MDA 40 feet, and increase S-26 Cat. C and D and Circling Cat. C and D visibility ¼ mile.

MISSED APPROACH: Climbing right turn to 2500 direct HIX NDB and hold.

AWOS-3 132.575	CAMPBELL APP CON 118.1 269.525	CLNC DEL 120.9	UNICOM 122.8 (CTAF) 0
--------------------------	--	--------------------------	---------------------------------



ELEV 564



MIRL Rwy 8-26 0

REIL Rwys 8 and 26 0

FAF to MAP 5.4 NM

Knots	60	90	120	150	180
Min:Sec	5:24	3:36	2:42	2:10	1:48

CATEGORY	A	B	C	D
S-26	1040-1	476 (500-1)	1040-1¼ 476 (500-1¼)	1040-1½ 476 (500-1½)
CIRCLING	1140-1	576 (600-1)	1280-2 716 (800-2)	1280-2¼ 716 (800-2¼)

LOC RWY 26

SE-1, 19 NOV 2009 to 17 DEC 2009

SE-1, 19 NOV 2009 to 17 DEC 2009