

RNAV (GPS) RWY 24

HARRISBURG-RALEIGH (HSB)

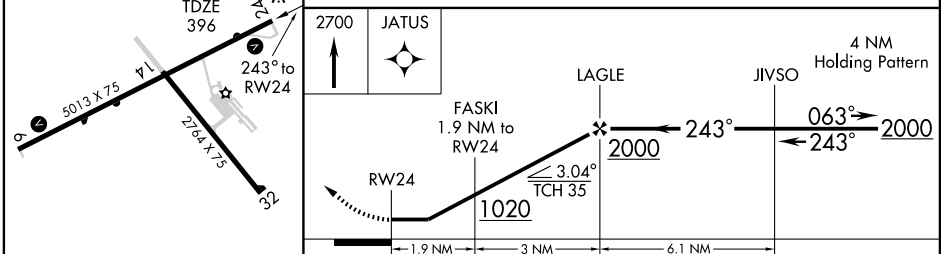
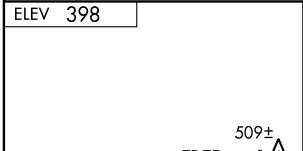
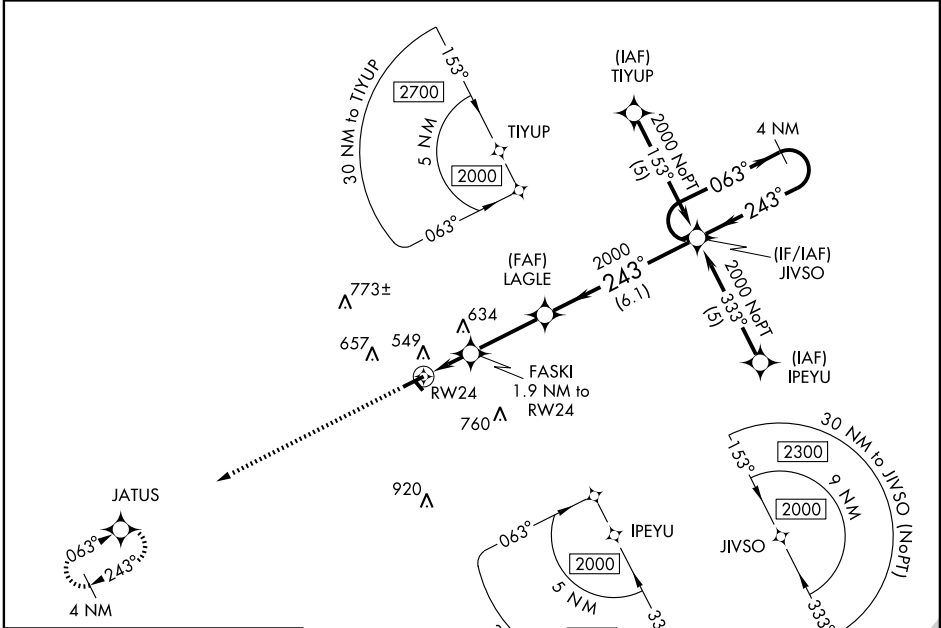
APP CRS	Rwy Idg	5013
243°	TDZE	396
	Apt Elev	398



When local altimeter setting not received, use Williamson County Rgnl altimeter setting and increase all MDAs 80 feet and increase LNAV and Circling Cats. C and D visibilities ¼ mile. VDP NA when using Williamson County Rgnl altimeter setting. Visibility reduction by helicopters NA. DME/DME RNP-0.3 NA.

MISSED APPROACH: Climb to 2700 direct JATUS and hold.

AWOS-3 135.925	KANSAS CITY CENTER 125.3 269.5	UNICOM 122.8 (CTAF)
--------------------------	--	-------------------------------



CATEGORY	A	B	C	D
LNAV MDA	880-1	484 (500-1)	880-1¼ 484 (500-1¼)	880-1½ 484 (500-1½)
CIRCLING	880-1 482 (500-1)	1020-1 622 (700-1)	1020-1¾ 622 (700-1¾)	1020-2 622 (700-2)

EC-3, 19 NOV 2009 to 17 DEC 2009

EC-3, 19 NOV 2009 to 17 DEC 2009