

SHERMAN, TEXAS

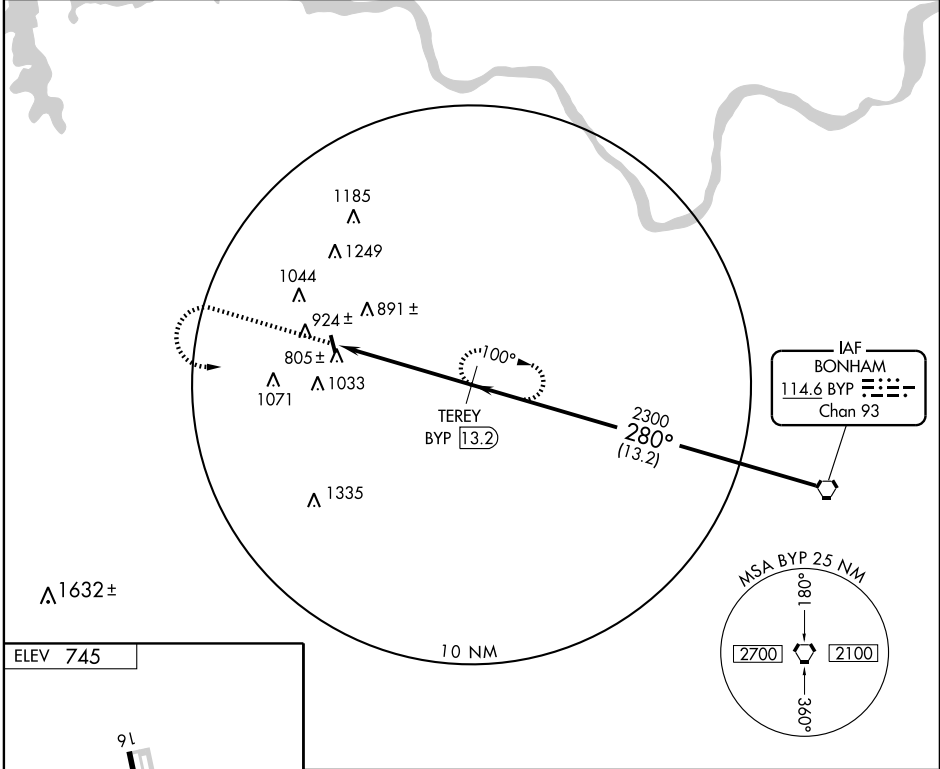
AL-5199 (FAA)

VORTAC BYP 114.6 Chan 93	APP CRS 280°	Rwy Idg TDZE Apt Elev	N/A N/A 745
--	------------------------	-----------------------------	--

VOR/DME-A
SHERMAN MUNI (SWI)

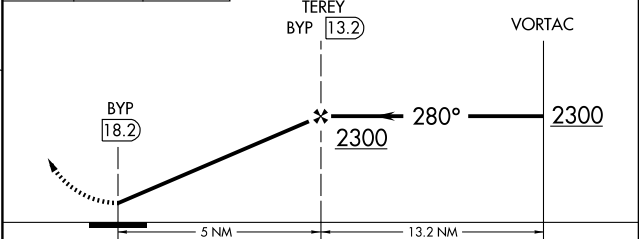
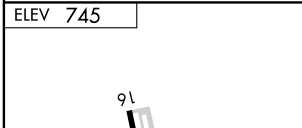
▲ NA Use Dallas-Love Field altimeter setting.	MISSED APPROACH: Climb to 2300, then left turn direct TEREY and hold.
--	---

FORT WORTH CENTER 124.75 377.1	UNICOM 122.8 (CTAF)
--	-------------------------------



SC-2, 19 NOV 2009 to 17 DEC 2009

SC-2, 19 NOV 2009 to 17 DEC 2009



CATEGORY	A	B	C	D
CIRCLING	1580-1 835 (900-1)	1580-1¼ 835 (900-1¼)	1600-2½ 855 (900-2½)	1600-2¾ 855 (900-2¾)

MIRL Rwy 16-34

SHERMAN, TEXAS
Orig-A 09295

33°37'N - 96°35'W

SHERMAN MUNI (SWI)
VOR/DME-A