

ILS or LOC RWY 29

HAMILTON / BUTLER COUNTY RGNL (HAO)

LOC/DME I-RQF 109.75	APP CRS 295°	Rwy Idg 5500
Chan 34 (Y)	TDZE 619	Apt Elev 633

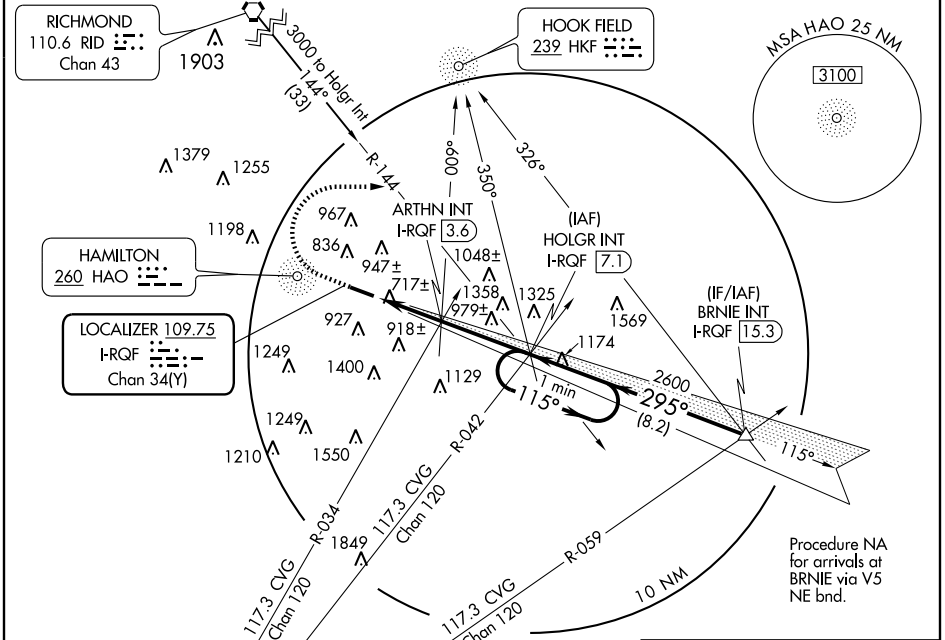
▼ If local altimeter setting not received, use Cincinnati Muni Airport-Lunken Field altimeter setting and increase all DAs 59 feet, and all MDAs 60 feet.
▲ VDP NA when using Cincinnati Muni Airport-Lunken Field altimeter setting. Inoperative table does not apply to S-ILS 29. For inoperative MALSR, increase S-LOC 29 Cat A visibility to 1 mile.

MALSR

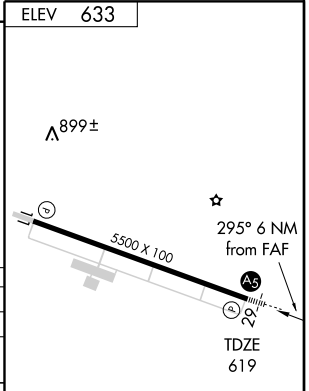
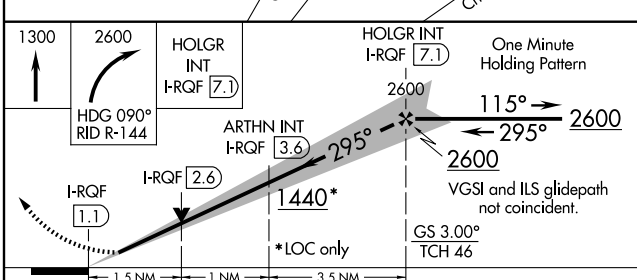


MISSED APPROACH: Climb to 1300 then climbing right turn to 2600 via heading 090° and RID VORTAC R-144 to HOLGR Int/I-RQF 7.1 DME and hold.

ASOS 121.425	CINCINNATI APP CON 121.0 257.725	CLNC DEL 126.25	UNICOM 123.05 (CTAF) 0
------------------------	--	---------------------------	----------------------------------



Procedure NA for arrivals at BRNIE via V5 NE bnd.



CATEGORY	A	B	C	D
S-ILS 29		819- ³ / ₄	200 (200- ³ / ₄)	
S-LOC 29	1440- ³ / ₄	821 (900- ³ / ₄)	1440-2 821 (900-2)	1440-2 ¹ / ₄ 821 (900-2 ¹ / ₄)
CIRCLING	1440-1 807 (900-1)	1440-1 ¹ / ₄ 807 (900-1 ¹ / ₄)	1440-2 ¹ / ₂ 807 (900-2 ¹ / ₂)	1440-2 ³ / ₄ 807 (900-2 ³ / ₄)
ARTHN FIX MINIMUMS				
S-LOC 29	1120- ³ / ₄	501 (500- ³ / ₄)	1120-1	501 (500-1)
CIRCLING	1200-1 567 (500-1)	1280-1 647 (700-1)	1300-1 ³ / ₄ 667 (700-2 ³ / ₄)	1320-2 ¹ / ₄ 687 (700-2 ¹ / ₄)

MIRL Rwy 11-29 0
REIL Rwy 11 and 29 0

FAF to MAP 6 NM

Knots	60	90	120	150	180
Min:Sec	6:00	4:00	3:00	2:24	2:00

EC-2, 19 NOV 2009 to 17 DEC 2009

EC-2, 19 NOV 2009 to 17 DEC 2009