

# RNAV (GPS) RWY 11

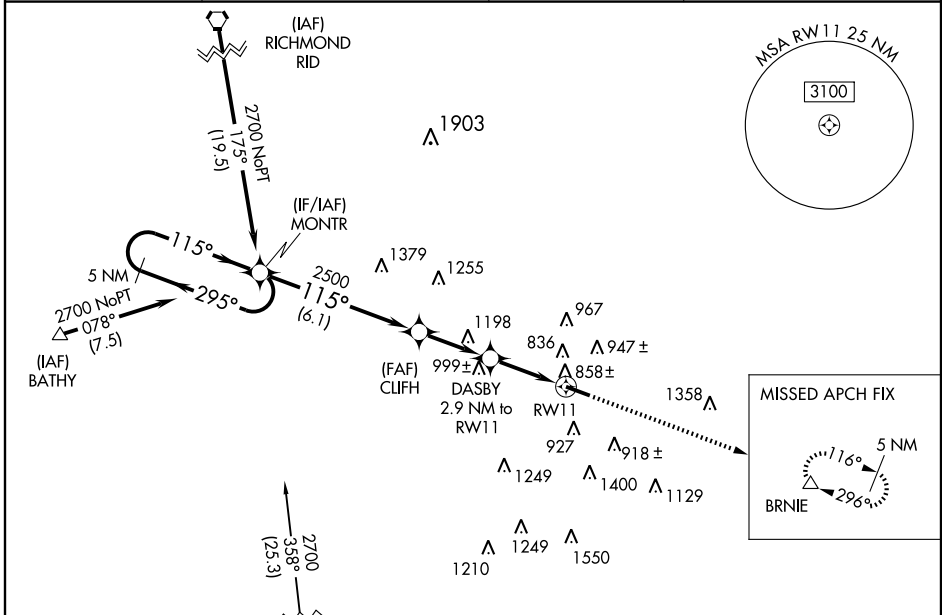
HAMILTON/BUTLER COUNTY RGNL (HAO)

WAAS CH <b>56600</b> <b>W11A</b>	APP CRS <b>115°</b>	Rwy Idg TDZE Apt Elev	<b>5500</b> <b>632</b> <b>633</b>
--	------------------------	-----------------------------	---

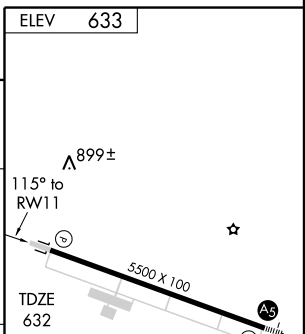
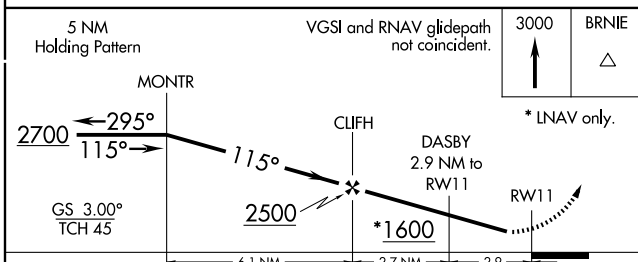
▼ If local altimeter setting not received, use Cincinnati Muni Airport-Lunken Field altimeter setting and increase all DAs 59 feet and all MDAs 60 feet. Baro-VNAV NA when using Cincinnati Muni Airport-Lunken Field altimeter setting. For uncompensated Baro-VNAV systems, LNAV/VNAV NA below -16°C (4°F) or above 47°C (116°F).  
▲ Visibility reduction by helicopters NA. DME/DME RNP-0.3 NA.

MISSED APPROACH:  
Climb to 3000 direct  
BRNIE and hold.

ASOS <b>121.425</b>	CINCINNATI APP CON <b>121.0 257.725</b>	CLNC DEL <b>126.25</b>	UNICOM <b>123.05 (CTAF) 0</b>
------------------------	--	---------------------------	----------------------------------



Procedure NA for arrivals on CVG VORTAC airway radials 010 CW 026.



CATEGORY	A	B	C	D
LPV DA		998-1¼	366 (400-1¼)	
LNAV/VNAV DA		1108-1¾	476 (500-1¾)	
LNAV MDA	1160-1	528 (600-1)	1160-1½ 528 (600-1½)	1160-1¾ 528 (600-1¾)
CIRCLING	1200-1 567 (600-1)	1280-1 647 (700-1)	1300-1¾ 667 (700-1¾)	1320-2¼ 687 (700-2¼)

MIRL Rwy 11-29 0  
REIL Rwy 11 and 29 0

EC-2, 11 MAR 2010 to 08 APR 2010

EC-2, 11 MAR 2010 to 08 APR 2010