

WAAS CH 61300 W29A	APP CRS 296°	Rwy Idg TDZE Apt Elev	5500 619 633
--	------------------------	-----------------------------	---

RNAV (GPS) RWY 29

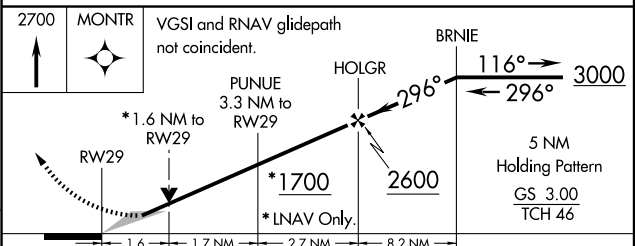
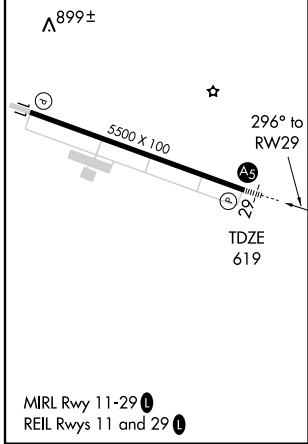
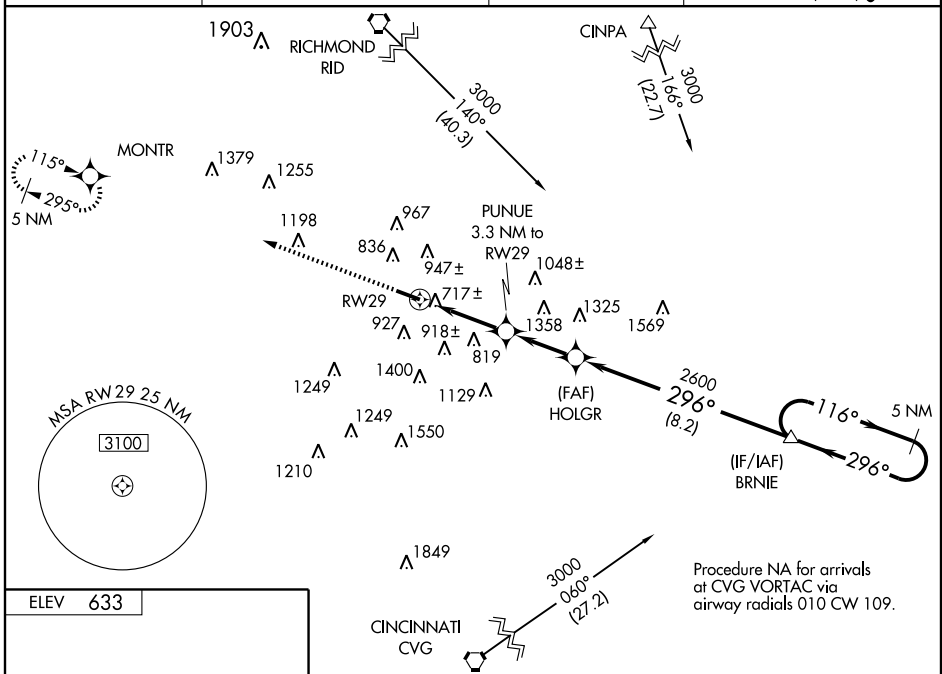
HAMILTON/BUTLER COUNTY RGNL (H.A.O)

If local altimeter setting not received, use Cincinnati Muni Airport-Lunken Field altimeter setting and increase all DAs 59 feet and all MDAs 60 feet. VDP NA when using Cincinnati Muni Airport-Lunken Field altimeter setting. Baro-VNAV NA when using Cincinnati Muni Airport-Lunken Field altimeter setting. For uncompensated Baro-VNAV systems, LNAV/VNAV NA below -16°C (4°F) or above 48°C (118°F). For inoperative MALS, increase LPV visibility to 1½ all Cats and LNAV Cat A/B visibility to 1. DME/DME RNP-0.3 NA.



MISSED APPROACH:
Climb to 2700 direct
MONTR and hold.

ASOS 121.425	CINCINNATI APP CON 121.0 257.725	CLNC DEL 126.25	UNICOM 123.05 (CTAF)
------------------------	--	---------------------------	--------------------------------



CATEGORY	A	B	C	D
LPV DA		944-¾	325 (400-¾)	
LNAV/VNAV DA		1128-1¼	509 (500-1¼)	
LNAV MDA	1140-¾	521 (600-¾)	1140-1 521 (600-1)	1140-1¼ 521 (600-1¼)
CIRCLING	1200-1 567 (600-1)	1280-1 647 (700-1)	1300-1¼ 667 (700-1¼)	1320-2¼ 687 (700-2¼)

EC-2, 11 MAR 2010 to 08 APR 2010

EC-2, 11 MAR 2010 to 08 APR 2010