

CAMPBELLVILLE, KENTUCKY

AL-5210 (FAA)

GPS RWY 5

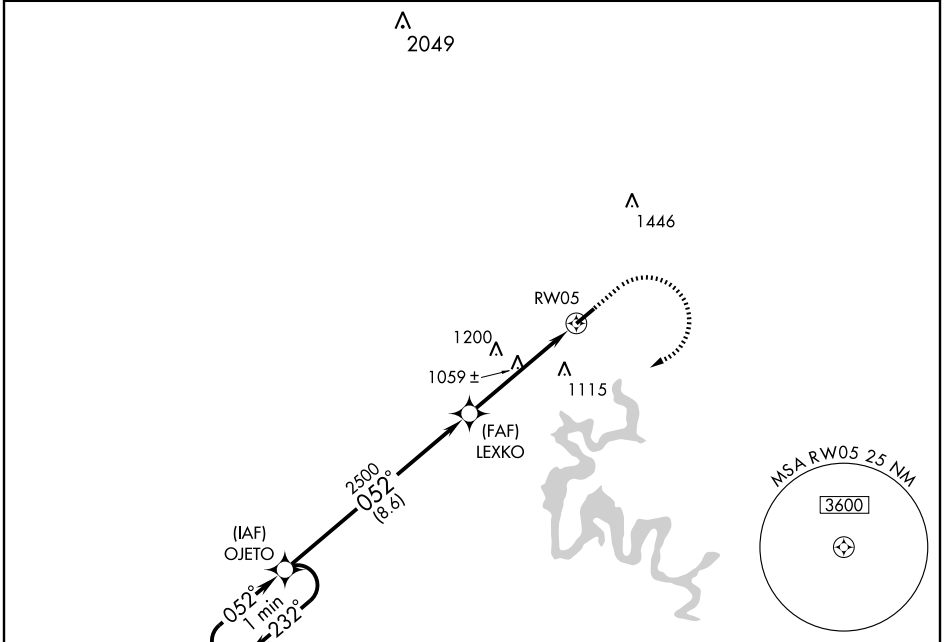
CAMPBELLVILLE/ TAYLOR COUNTY (A.A.S)

APP CRS	Rwy Idg	5003
052°	TDZE	903
	Apt Elev	921

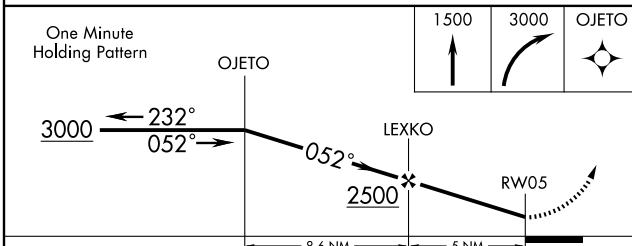
NA If local altimeter setting not received, use Somerset altimeter setting and increase all MDAs 100 feet.

MISSED APPROACH: Climb to 1500, then climbing right turn to 3000 direct OJETO WP and hold.

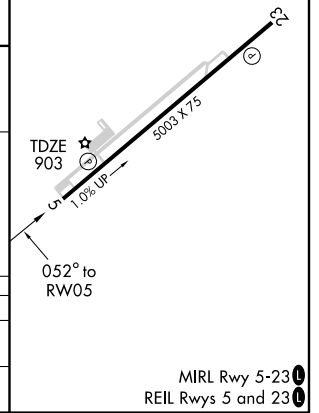
AWOS-3 121.125	INDIANAPOLIS CENTER 121.175 353.65	UNICOM 122.7 (CTAF) 0
---------------------------------	---	--



ELEV	921
------	------------



CATEGORY	A	B	C	D
S-5	1400-1	497 (500-1)	1400-1¼ 497 (500-1¼)	1400-1½ 497 (500-1½)
CIRCLING	1400-1	479 (500-1)	1400-1½ 479 (500-1½)	1480-2 559 (600-2)



MIRL Rwy 5-23 0
REIL Rws 5 and 23 0

CAMPBELLVILLE, KENTUCKY
Orig-A 03135

37°21'N-85°19'W

CAMPBELLVILLE/ TAYLOR COUNTY (A.A.S)
GPS RWY 5

SE-1, 19 NOV 2009 to 17 DEC 2009

SE-1, 19 NOV 2009 to 17 DEC 2009