

CAMPBELLVILLE, KENTUCKY

AL-5210 (FAA)

SDF AAS <b>111.1</b>	APP CRS <b>232°</b>	Rwy Idg TDZE Apt Elev	<b>5003</b> <b>921</b> <b>921</b>
-------------------------	------------------------	-----------------------------	---

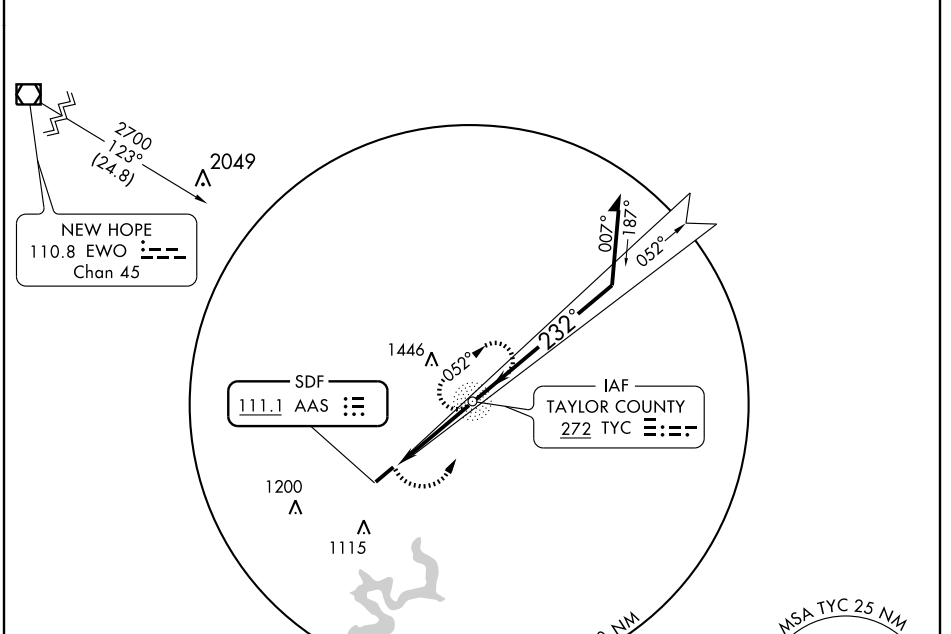
# SDF RWY 23

CAMPBELLVILLE/ TAYLOR COUNTY (AAS)

**NA** If local altimeter setting not received, use Somerset altimeter setting and increase all MDAs 100 feet. ADF REQUIRED

MISSED APPROACH: Climbing left turn to 2700 direct TYC NDB and hold.

AWOS-3 <b>121.125</b>	INDIANAPOLIS CENTER <b>121.175 353.65</b>	UNICOM <b>122.7 (CTAF) 0</b>
--------------------------	--	---------------------------------



ELEV 921

MIRL Rwy 5-23  
REIL Rwy 5 and 23

FAF to MAP 3.7 NM					
Knots	60	90	120	150	180
Min:Sec	3:42	2:28	1:51	1:29	1:14

CATEGORY	A		B		C		D	
	1360-1		439 (500-1)		1360-1¼ 439 (500-1¼)		1360-1½ 439 (500-1½)	
S-23	1360-1		439 (500-1)		1380-1½ 459 (500-1½)		1480-2 559 (600-2)	
CIRCLING	1380-1		459 (500-1)					

SE-1, 19 NOV 2009 to 17 DEC 2009

SE-1, 19 NOV 2009 to 17 DEC 2009

CAMPBELLVILLE, KENTUCKY  
Amdt 2A 03135

CAMPBELLVILLE/ TAYLOR COUNTY (AAS)  
**SDF RWY 23**

37°21'N-85°19'W