

CAMPBELLVILLE, KENTUCKY

AL-5210 (FAA)

# NDB or GPS RWY 23

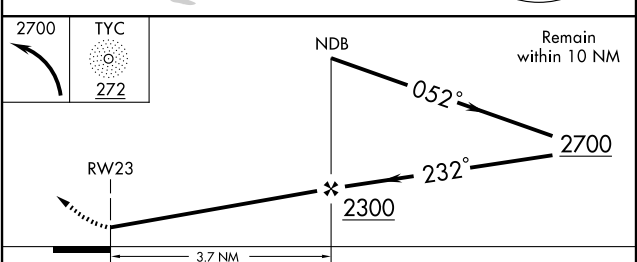
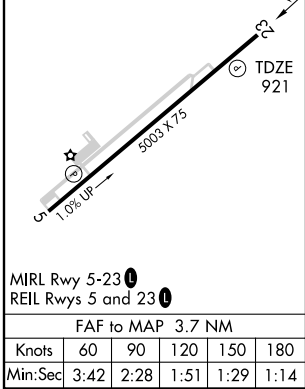
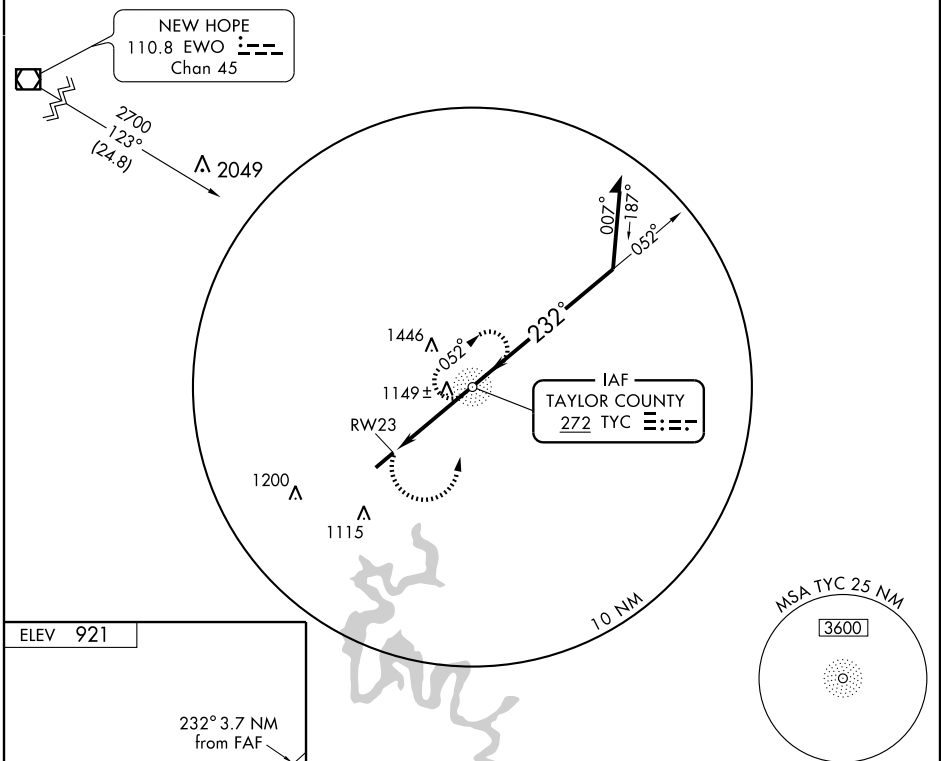
CAMPBELLVILLE/ TAYLOR COUNTY (A.A.S)

NDB TYC <b>272</b>	APP CRS <b>232°</b>	Rwy ldg TDZE Apt Elev	<b>5003</b> <b>921</b> <b>921</b>
-----------------------	------------------------	-----------------------------	-----------------------------------------

**NA** If local altimeter setting not received, use Somerset altimeter setting and increase all MDAs 100 feet.

MISSED APPROACH: Climbing left turn to 2700 direct TYC NDB and hold.

AWOS-3 <b>121.125</b>	INDIANAPOLIS CENTER <b>121.175 353.65</b>	UNICOM <b>122.7 (CTAF) 0</b>
--------------------------	----------------------------------------------	---------------------------------



MIRL Rwy 5-23		REIL Rwys 5 and 23	
FAF to MAP 3.7 NM			
Knots	60	90	120 150 180
Min:Sec	3:42	2:28	1:51 1:29 1:14
CATEGORY	A	B	C D
S-23	1400-1	479 (500-1)	1400-1¼ 479 (500-1¼) 1400-1½ 479 (500-1½)
CIRCLING	1400-1	479 (500-1)	1400-1½ 479 (500-1½) 1480-2 559 (600-2)

CAMPBELLVILLE, KENTUCKY  
Amdt 3A 04050

CAMPBELLVILLE/ TAYLOR COUNTY (A.A.S)  
NDB or GPS RWY 23

37° 21' N - 85° 19' W

SE-1, 11 MAR 2010 to 08 APR 2010

SE-1, 11 MAR 2010 to 08 APR 2010