

SDF AAS 111.1	APP CRS 232°	Rwy Idg TDZE Apt Elev	5003 921 921
-------------------------	------------------------	-----------------------------	---

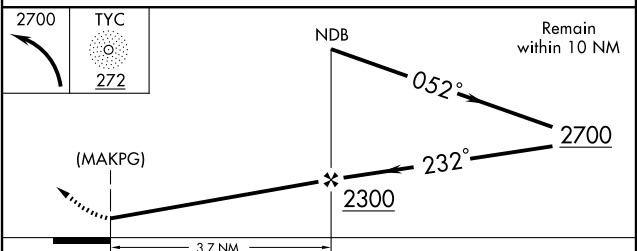
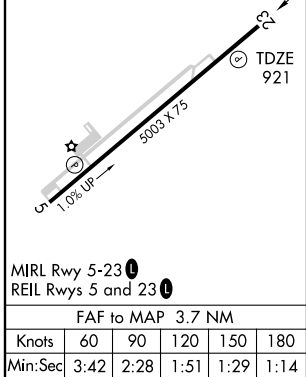
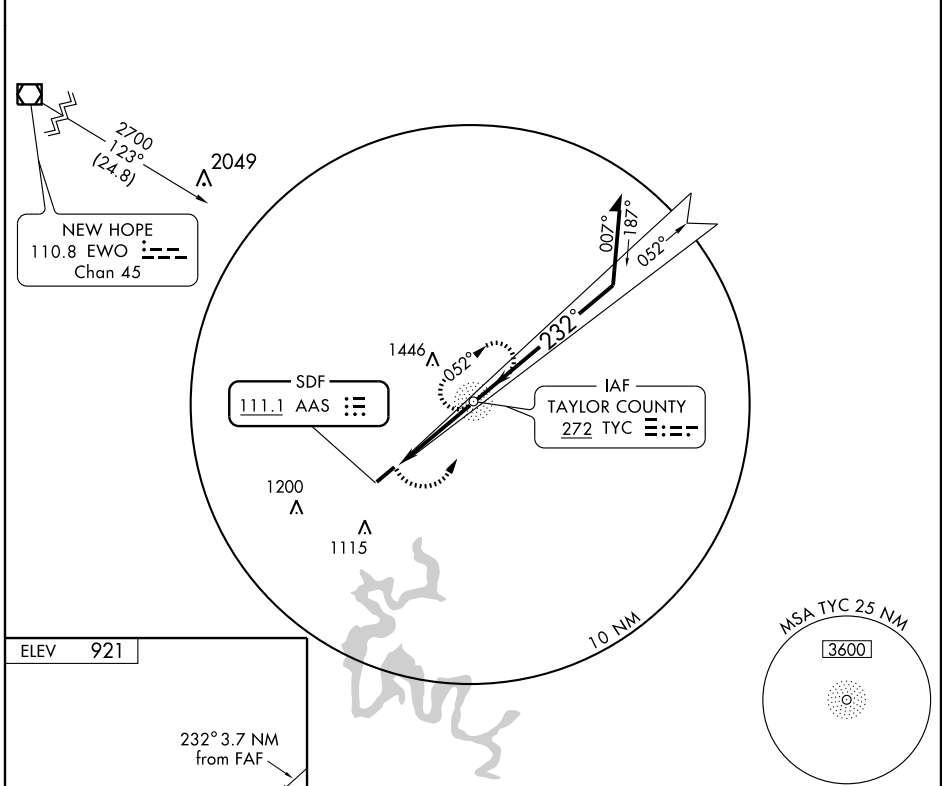
SDF RWY 23

CAMPBELLVILLE/ TAYLOR COUNTY (AAS)

NA If local altimeter setting not received, use Somerset altimeter setting and increase all MDA's 100 feet. **ADF REQUIRED**

MISSED APPROACH: Climbing left turn to 2700 direct TYC NDB and hold.

AWOS-3 121.125	INDIANAPOLIS CENTER 121.175 353.65	UNICOM 122.7 (CTAF) 0
--------------------------	--	---------------------------------



CATEGORY	A	B	C	D
S-23	1360-1	439 (500-1)	1360-1¼ 439 (500-1¼)	1360-1½ 439 (500-1½)
CIRCLING	1380-1	459 (500-1)	1380-1½ 459 (500-1½)	1480-2 559 (600-2)

SE-1, 11 MAR 2010 to 08 APR 2010

SE-1, 11 MAR 2010 to 08 APR 2010