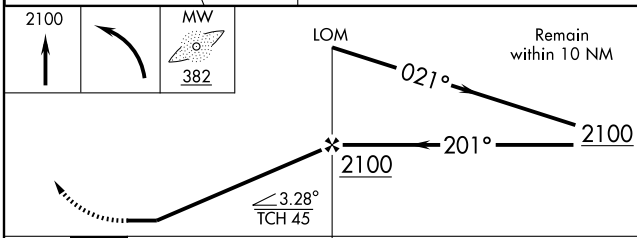
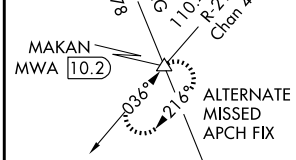
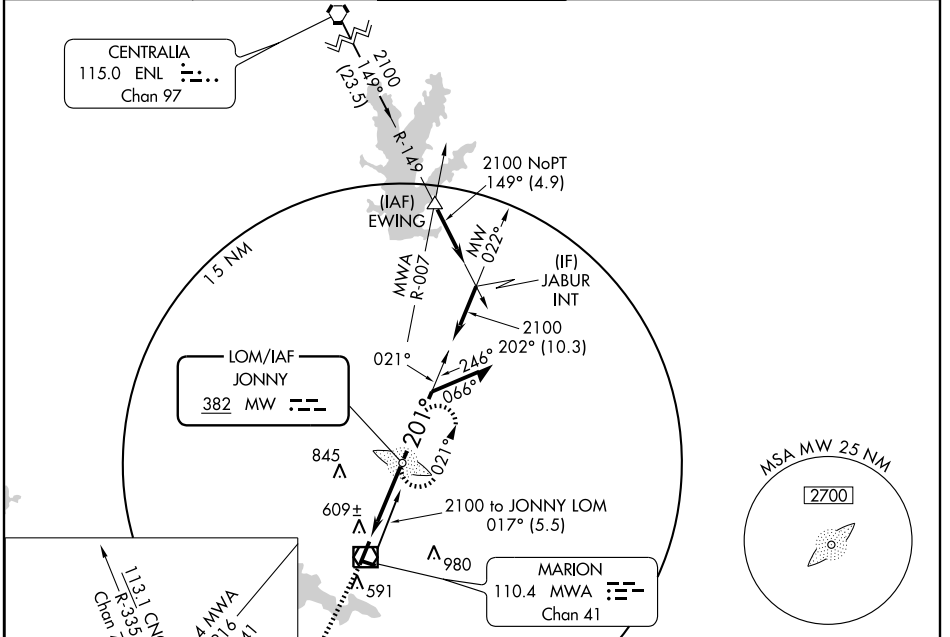


NDB RWY 20

MARION/WILLIAMSON COUNTY RGNL (MWA)

LOM MW 382	APP CRS 201°	Rwy Idg 8002 TDZE 468 Apt Elev 472
----------------------	------------------------	---

<p>⚠ If local altimeter setting not received, use Carbondale-Murphysboro altimeter setting and increase all MDAs 40 feet.</p>	<p>MALSR</p>	<p>MISSED APPROACH: Climb to 2100 then left turn direct MW LOM and hold.</p>		
<p>AWOS-3 119.675</p>	<p>KANSAS CITY CENTER 125.3 269.5</p>	<p>MARION TOWER ★ 126.9 (CTAF) 0</p>	<p>GND CON 121.7</p>	<p>UNICOM 122.95</p>



ELEV 472	201° 4.6 NM from FAF
TDZE 468	8002 X 150
473±	561±
542	520
4997 X 100	0.3% UP
<p>HIRL Rwy 2-20 MIRL Rwy 11-29 REIL Rwy 2 REIL Rws 11 and 29</p>	
<p>FAF to MAP 4.6 NM</p>	
Knots	60 90 120 150 180
Min:Sec	4:36 3:04 2:18 1:50 1:32

CATEGORY	A	B	C	D
S-20	920-¾	452 (500-¾)		920-1¼ 452 (500-1¼)
CIRCLING	920-1 448 (500-1)	940-1 468 (500-1)	940-1½ 468 (500-1½)	1040-2 568 (600-2)

NDB RWY 20

EC-3, 11 MAR 2010 to 08 APR 2010

EC-3, 11 MAR 2010 to 08 APR 2010