

RNAV (GPS) RWY 2

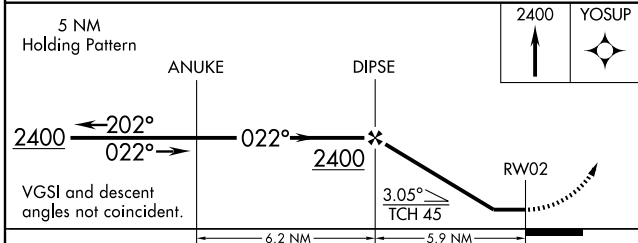
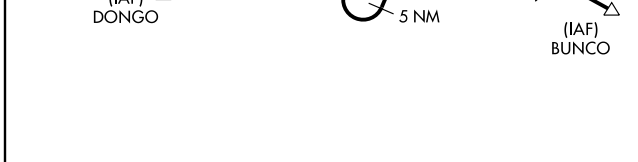
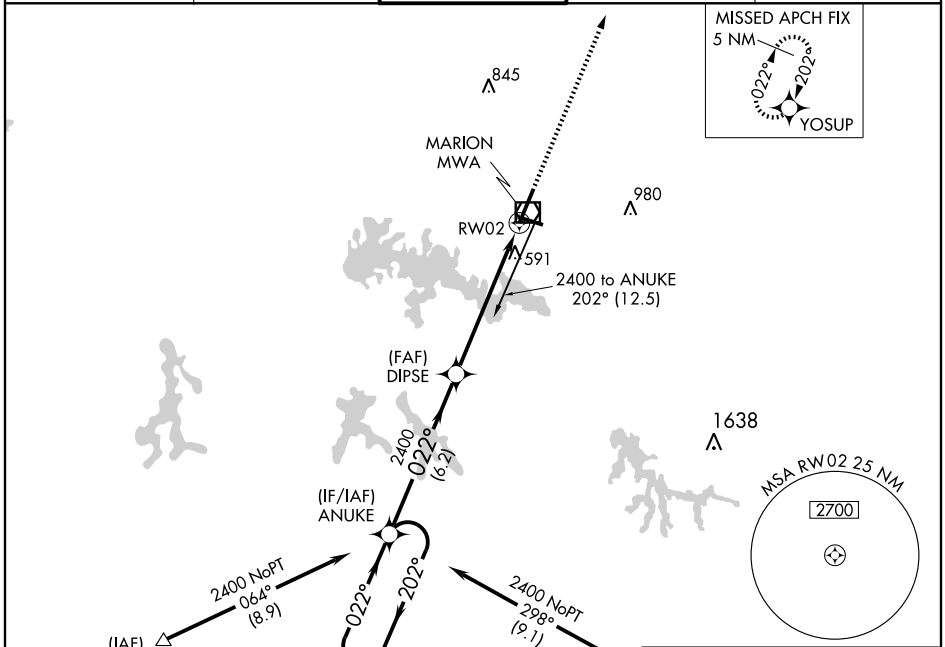
MARION/WILLIAMSON COUNTY RGNL (MWA)

APP CRS	Rwy Idg	8002
022°	TDZE	467
	Apt Elev	472

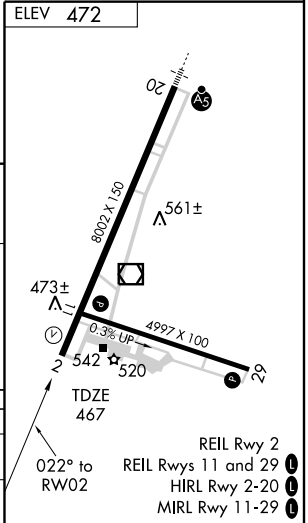
⚠ If local altimeter setting not received, use Carbondale-Murphysboro altimeter setting and increase all MDAs 40 feet.
⚠ Visibility reduction by helicopters NA. DME/DME RNP-0.3 NA.

MISSED APPROACH: Climb to 2400 direct YOSUP and hold.

AWOS-3 119.675	KANSAS CITY CENTER 125.3 269.5	MARION TOWER ★ 126.9 (CTAF) 0	GND CON 121.7	UNICOM 122.95
--------------------------	--	---	-------------------------	-------------------------



CATEGORY	A	B	C	D
LNVA MDA	860-1 393 (400-1)		860-1¼ 393 (400-1¼)	
CIRCLING	920-1 448 (500-1)	940-1 468 (500-1)	940-1½ 468 (500-1½)	1040-2 568 (600-2)



EC-3, 11 MAR 2010 to 08 APR 2010

EC-3, 11 MAR 2010 to 08 APR 2010