

MARION, ILLINOIS

AL-5215 (FAA)

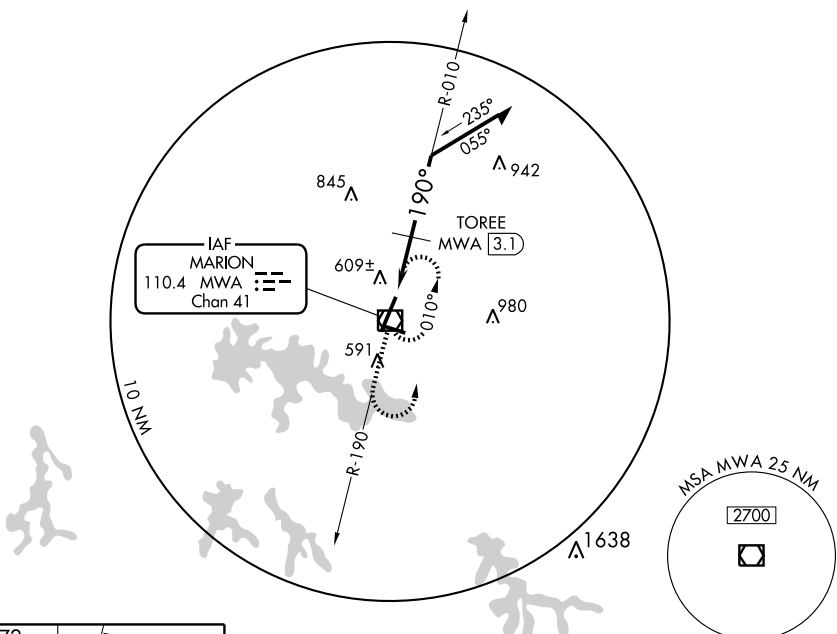
VOR/DME MWA 110.4 Chan 41	APP CRS 190°	Rwy Idg 8002 TDZE 468 Apt Elev 472
---	------------------------	---

VOR RWY 20

MARION/ WILLIAMSON COUNTY RGNL (MWA)

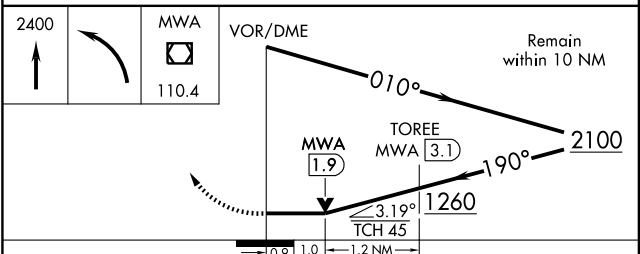
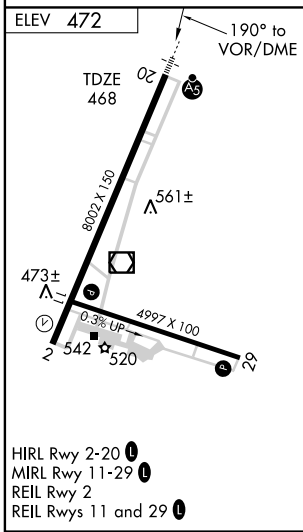
<p>▼ If local altimeter setting not received, use Carbondale-Murphysboro altimeter setting and increase all MDAs 40 feet. VDP NA when using Carbondale-Murphysboro altimeter setting. TORRE Fix Minimums: For inoperative MALSRS increase S-20 Cat D visibility to 1¼.</p>	<p>MALSRS AS</p>	<p>MISSED APPROACH: Climb to 2400 then left turn direct MWA VOR/DME and hold.</p>
--	----------------------	---

AWOS-3 119.675	KANSAS CITY CENTER 125.3 269.5	MARION TOWER ★ 126.9 (CTAF) 0	GND CON 121.7	UNICOM 122.95
--------------------------	--	---	-------------------------	-------------------------



EC-3, 11 MAR 2010 to 08 APR 2010

EC-3, 11 MAR 2010 to 08 APR 2010



CATEGORY	A	B	C	D
S-20	1260-1/2 792 (800-1/2)	1260-3/4 792 (800-3/4)	1260-1 3/4 792 (800-1 3/4)	1260-2 792 (800-2)
CIRCLING	1260-1 788 (800-1)	1260-1 1/4 788 (800-1 1/4)	1260-2 1/4 788 (800-2 1/4)	1260-2 1/2 788 (800-2 1/2)
TORRE FIX MINIMUMS				
S-20	860-1/2 392 (400-1/2)			860-1 392 (400-1)
CIRCLING	920-1 448 (500-1)	940-1 468 (500-1)	940-1 1/2 468 (500-1 1/2)	1040-2 568 (600-2)

MARION, ILLINOIS
Amdt 17 09239

MARION/ WILLIAMSON COUNTY RGNL (MWA)
37°45'N - 89°01'W
VOR RWY 20