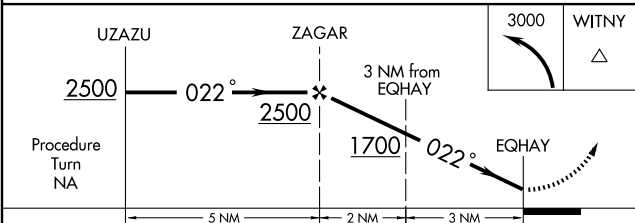
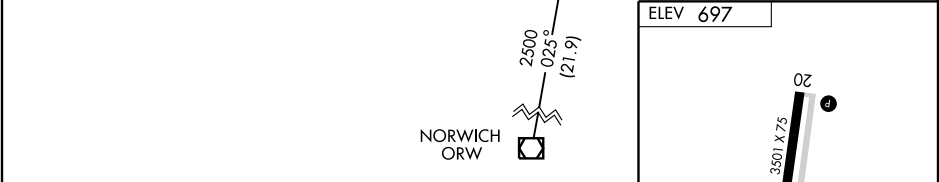
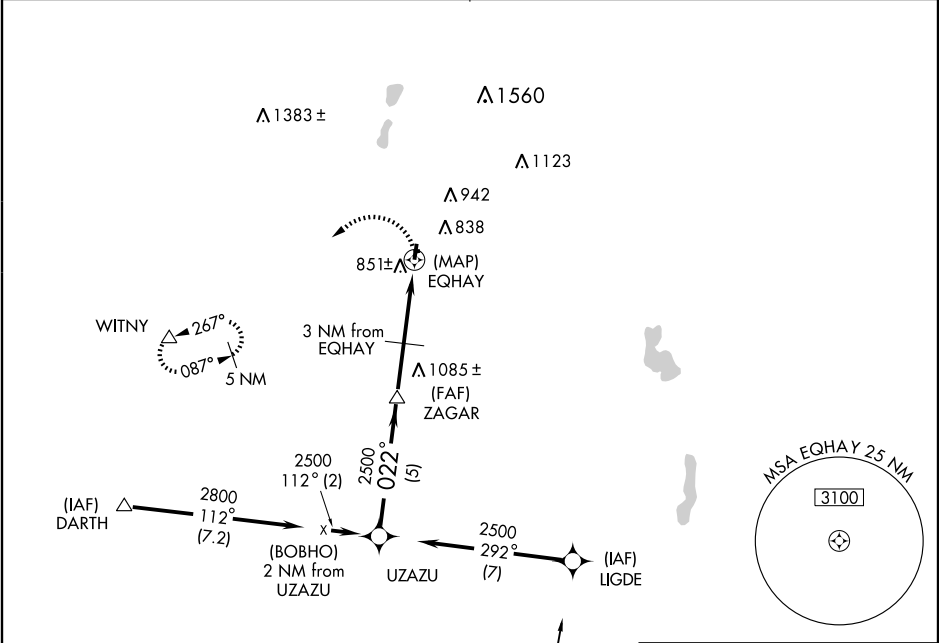


**GPS RWY 2**  
SOUTHBRIDGE MUNI (3B0)

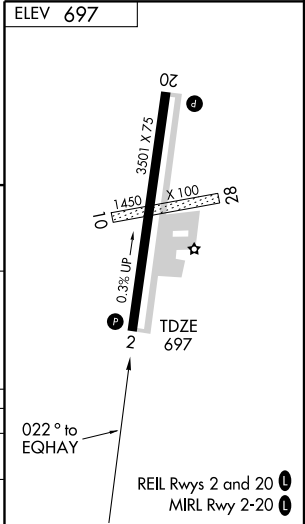
APP CRS **022°**  
Rwy Idg **3501**  
TDZE **697**  
Apt Elev **697**

**▼** Use Worcester altimeter setting.  
**▲** NA MISSED APPROACH: Climbing left turn to 3000 direct WITNY WP and hold.

BRADLEY APP CON **119.0 327.1** UNICOM **122.8 (CTAF)**



CATEGORY	A	B	C	D
S-2	1180-1	483 (500-1)	1180-1¼ 483 (500-1¼)	NA
CIRCLING	1340-1	643 (700-1)	1340-1¾ 643 (700-1¾)	NA



NE-1, 11 FEB 2010 to 11 MAR 2010

NE-1, 11 FEB 2010 to 11 MAR 2010