

CODY, WYOMING

AL-5243 (FAA)

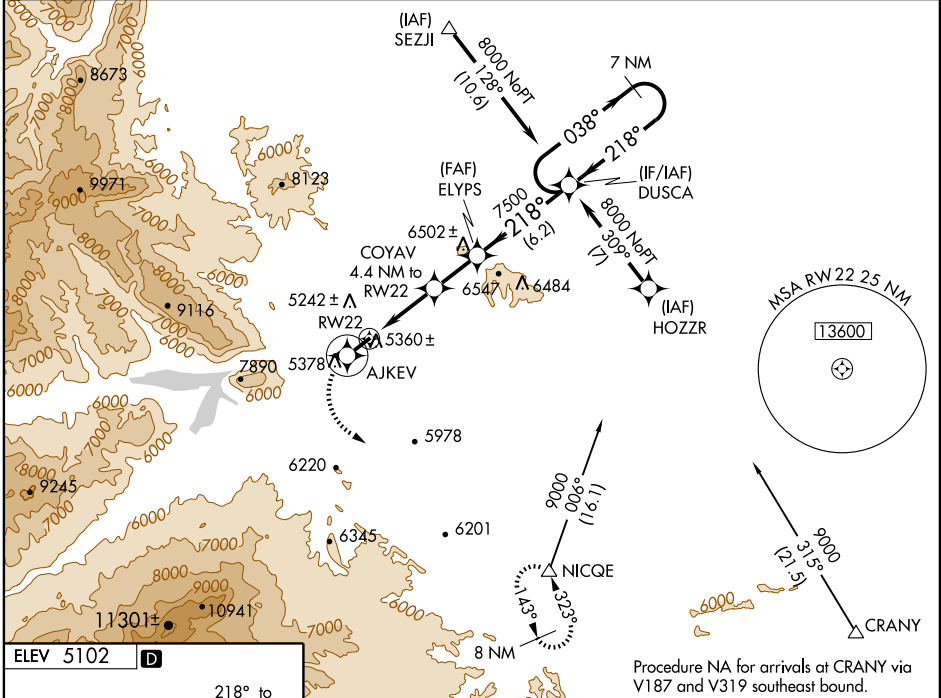
WAAS CH 93600 W22A	APP CRS 218°	Rwy ldg TDZE Apt Elev	7178 5076 5102
--	------------------------	-----------------------------	---

RNAV (GPS) RWY 22

CODY/ YELLOWSTONE RGNL (COD)

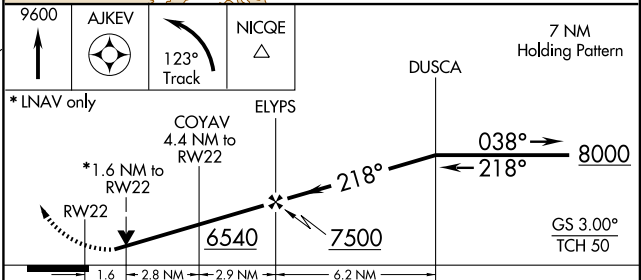
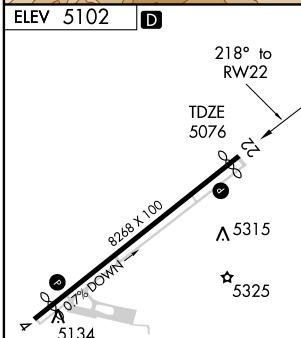
▽ ▲	DME/DME RNP- 0.3 NA.	MISSED APPROACH: Climb to 9600 direct AJKEV and left turn via 123° track to NICQE and hold.
----------------------	----------------------	---

AWOS-3 135.075	SALT LAKE CENTER 133.25 285.6	UNICOM 122.8 (CTAF) 0
--------------------------	---	---------------------------------



NW-1, 19 NOV 2009 to 17 DEC 2009

NW-1, 19 NOV 2009 to 17 DEC 2009



CATEGORY	A	B	C	D
LPV DA	5457-1¼ 381 (400-1¼)			
RNAV/DA VNAV	NA			
RNAV MDA	5620-1	544 (600-1)	5620-1½ 544 (600-1½)	5620-1¾ 544 (600-1¾)
CIRCLING	5840-1¼	738 (800-1¼)	5900-2¼ 798 (800-2¼)	5960-2¾ 858 (900-2¾)

REIL Rwy 4 and 22 **0**
MIRL Rwy 4-22 **0**

CODY, WYOMING
Amdt 1 09015

44°31'N - 109°01'W

CODY/ YELLOWSTONE RGNL (COD)

RNAV (GPS) RWY 22