

CODY, WYOMING

AL-5243 (FAA)

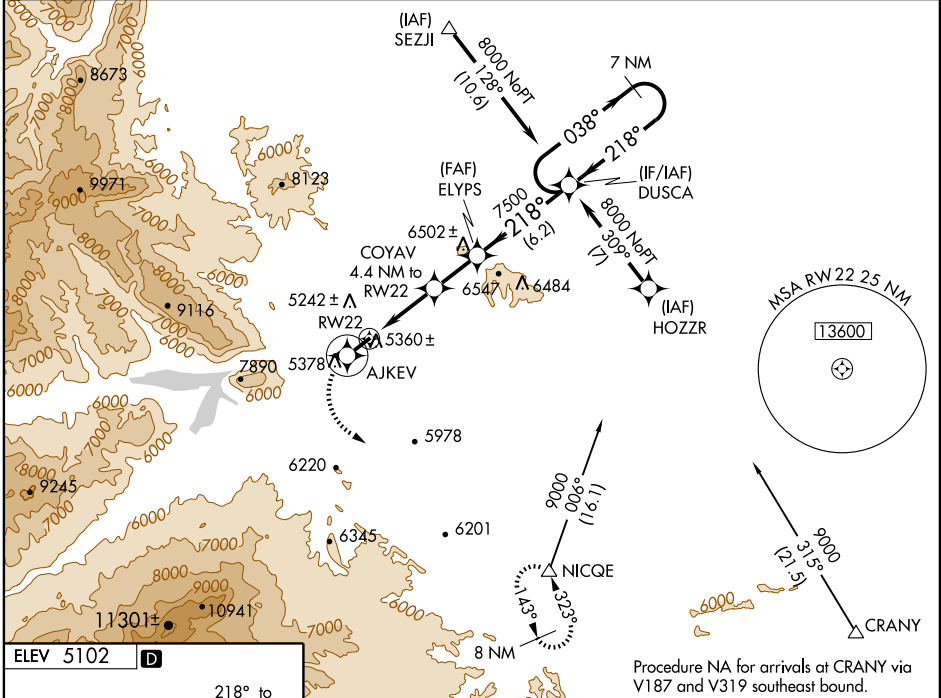
# RNAV (GPS) RWY 22

CODY/ YELLOWSTONE RGNL (COD)

WAAS CH <b>93600</b> <b>W22A</b>	APP CRS <b>218°</b>	Rwy ldg TDZE Apt Elev	<b>7178</b> <b>5076</b> <b>5102</b>
--	------------------------	-----------------------------	---

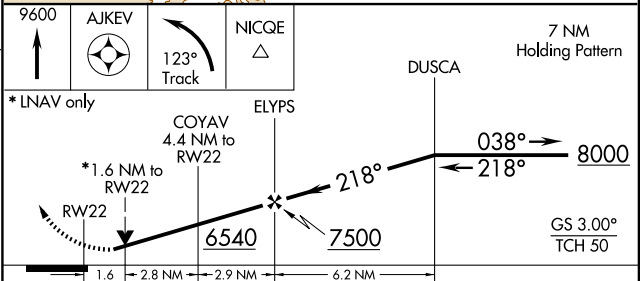
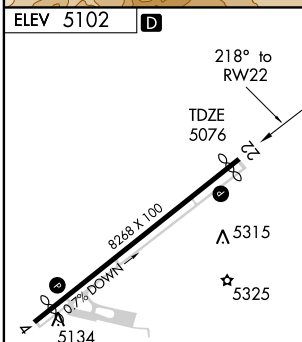
<b>▽</b> <b>▲</b>	DME/DME RNP- 0.3 NA.	MISSED APPROACH: Climb to 9600 direct AJKEV and left turn via 123° track to NICQE and hold.
----------------------	----------------------	---

AWOS-3 <b>135.075</b>	SALT LAKE CENTER <b>133.25 285.6</b>	UNICOM <b>122.8 (CTAF) 0</b>
--------------------------	---	---------------------------------



NW-1, 11 MAR 2010 to 08 APR 2010

NW-1, 11 MAR 2010 to 08 APR 2010



CATEGORY	A	B	C	D
LPV DA	5457-1¼ 381 (400-1¼)			
LNVA/DA VNAV	NA			
LNVA MDA	5620-1	544 (600-1)	5620-1½ 544 (600-1½)	5620-1¾ 544 (600-1¾)
CIRCLING	5840-1¼	738 (800-1¼)	5900-2¼ 798 (800-2¼)	5960-2¾ 858 (900-2¾)

REIL Rwy 4 and 22 **0**  
MIRL Rwy 4-22 **0**

CODY, WYOMING  
Amdt 1 09015

44°31'N - 109°01'W

# RNAV (GPS) RWY 22