

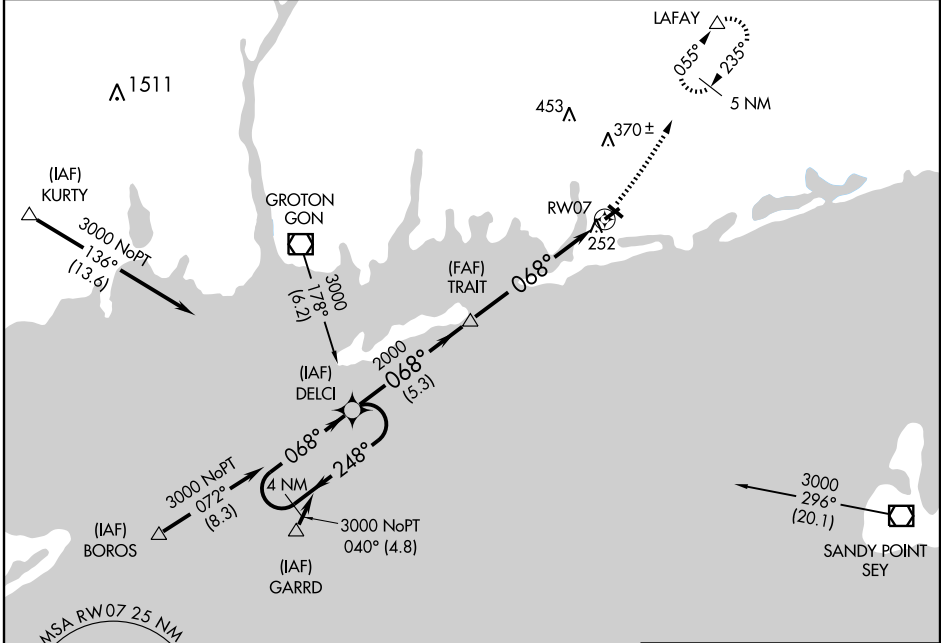
RNAV (GPS) RWY 7

WESTERLY STATE (WST)

APP CRS 068°	Rwy Idg 4010
	TDZE 76
	Apt Elev 81

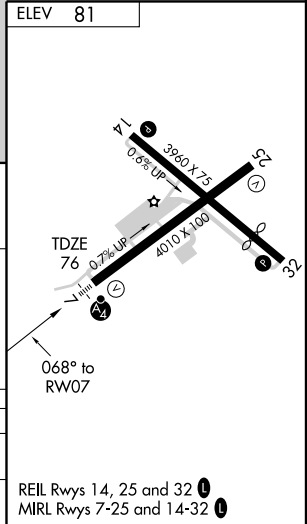
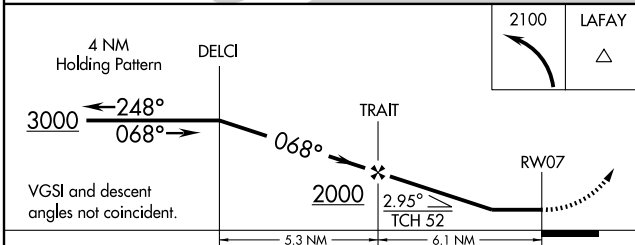
<p>▼ Inoperative table does not apply.</p> <p>▲ NA DME/DME RNP-0.3 NA.</p>	<p>MALSF</p> <p>☯ - -</p>	<p>MISSED APPROACH: Climbing left turn to 2100 direct LAFAY and hold.</p>
--	----------------------------	---

ASOS 132.375	PROVIDENCE APP CON ★ 119.45 319.2	UNICOM 123.0 (CTAF) 0
------------------------	---	---------------------------------



NE-1, 19 NOV 2009 to 17 DEC 2009

NE-1, 19 NOV 2009 to 17 DEC 2009



CATEGORY	A	B	C	D
LNVA MDA	520-1	444 (500-1)	520-1¼ 444 (500-1¼)	520-1½ 444 (500-1½)
CIRCLING	580-1	499 (500-1)	580-1½ 499 (500-1½)	720-2 639 (700-2)

REIL Rwy 14, 25 and 32 0
MIRL Rwy 7-25 and 14-32 0