

LOC/DME I-JJD <b>108.35</b> Chan 20 (Y)	APP CRS <b>269°</b>	Rwy Idg TDZE Apt Elev	<b>4278</b> <b>240</b> <b>247</b>
---	------------------------	-----------------------------	---

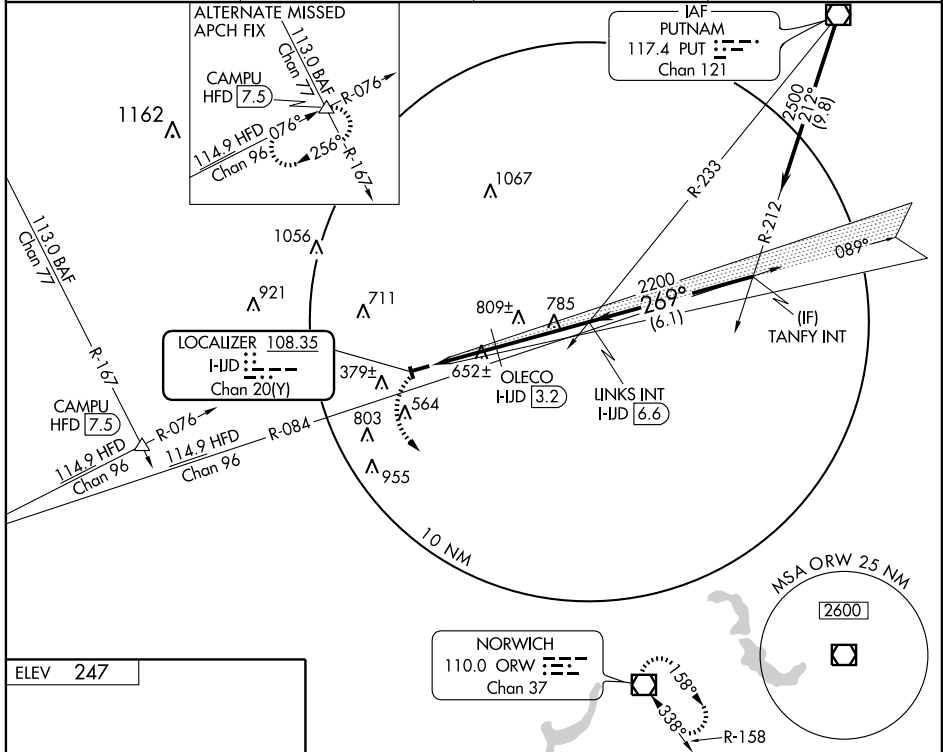
# LOC RWY 27

WILLIMANTIC/ WINDHAM (IJD)

**⚠** Visibility reduction by helicopters NA. When local altimeter setting not received, use Windsor Locks altimeter setting and increase all MDA 80 feet and increase S-27 Cat C, Circling Cat C, OLECO fix minimums S-27 Cat B and C, and Circling Cat B and C visibilities 1/4 mile.

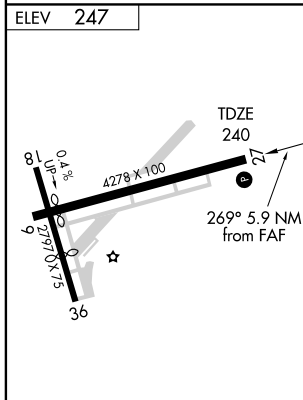
**MISSED APPROACH:** Climbing left turn to 2600 direct ORW VOR/DME and hold.

ASOS <b>133.675</b>	BRADLEY APP CON <b>127.8 269.325</b>	CLNC DEL <b>128.6</b>	UNICOM <b>122.975</b> (CTAF) <b>⓪</b>
------------------------	---	--------------------------	--



NE-1, 19 NOV 2009 to 17 DEC 2009

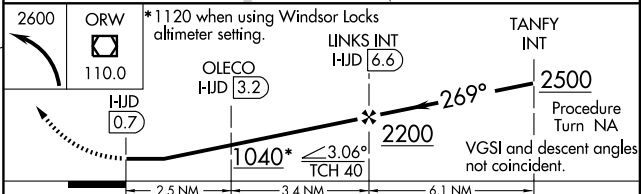
NE-1, 19 NOV 2009 to 17 DEC 2009



REIL Rwy 27 **⓪**  
MIRL Rwy 9-27 **⓪**

FAF to MAP 5.9 NM

Knots	60	90	120	150	180
Min:Sec	5:54	3:56	2:57	2:22	1:58



CATEGORY	A	B	C	D
S-27	1040-1 800 (800-1)	1040-1¼ 800 (800-1¼)	1040-2¼ 800 (800-2¼)	NA
CIRCLING	1040-1 793 (800-1)	1040-1¼ 793 (800-1¼)	1040-2¼ 793 (800-2¼)	NA
OLECO FIX MINIMUMS				
S-27	920-1 680 (700-1)	920-2 680 (700-2)	920-2 680 (700-2)	NA
CIRCLING	920-1 673 (700-1)	920-2 713 (800-2)	920-2 713 (800-2)	NA