

ILS RWY 3

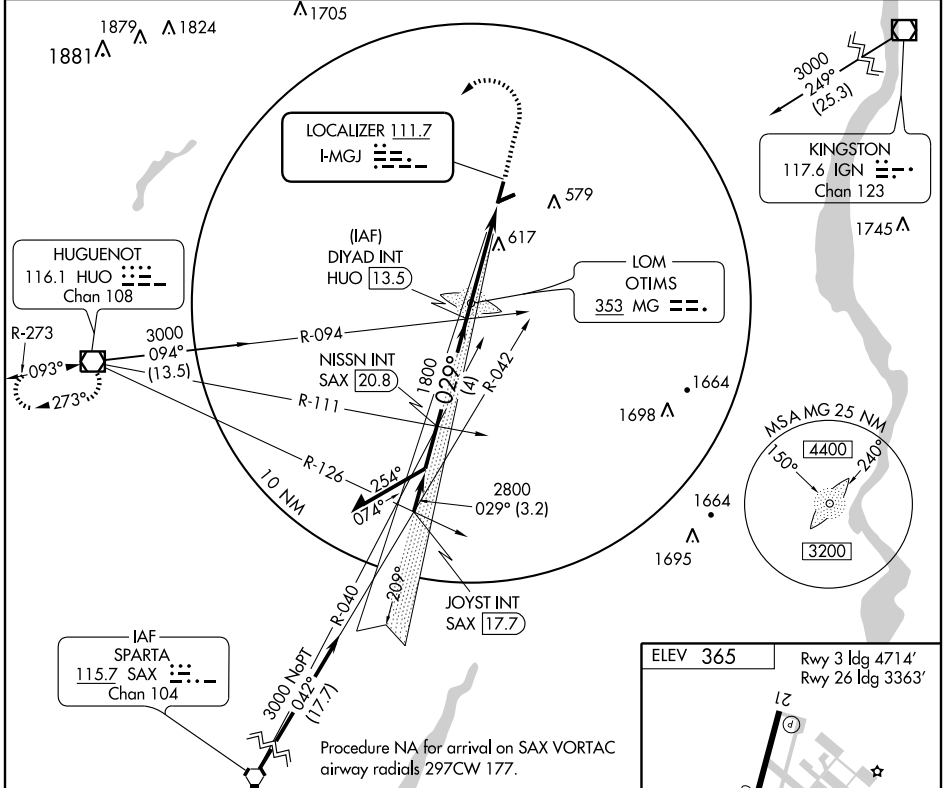
MONTGOMERY/ORANGE COUNTY (MGJ)

LOC I-MGJ 111.7	APP CRS 029°	Rwy ldg TDZE Apt Elev	4714 354 365
---------------------------	------------------------	-----------------------------	-----------------------------------------

NA

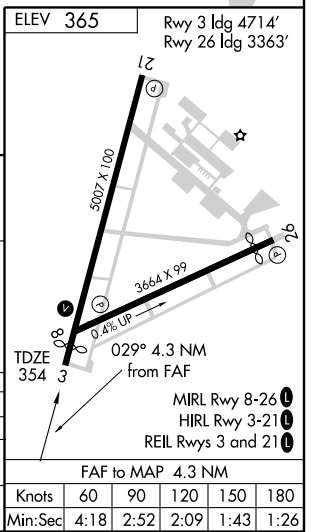
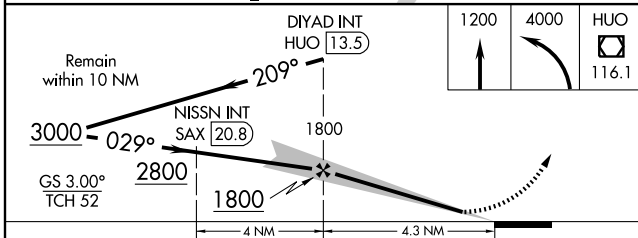
MISSED APPROACH: Climb to 1200, then climbing left turn to 4000 direct HVO VOR/DME and hold.

ASOS 119.275	NEW YORK APP CON 132.75 363.1	CLNC DEL 123.85	UNICOM 122.725 (CTAF) 0
------------------------	-----------------------------------------	---------------------------	------------------------------------------



NE-2, 19 NOV 2009 to 17 DEC 2009

NE-2, 19 NOV 2009 to 17 DEC 2009



CATEGORY	A	B	C	D
S-ILS 3		618-1	264 (300-1)	
S-LOC 3	880-1	526 (600-1)	880-1½ 526 (600-1½)	880-1¾ 526 (600-1¾)
CIRCLING	1200-1 835 (900-1)	1200-1¼ 835 (900-1¼)	1200-2½ 835 (900-2½)	1200-2¾ 835 (900-2¾)

ILS RWY 3