

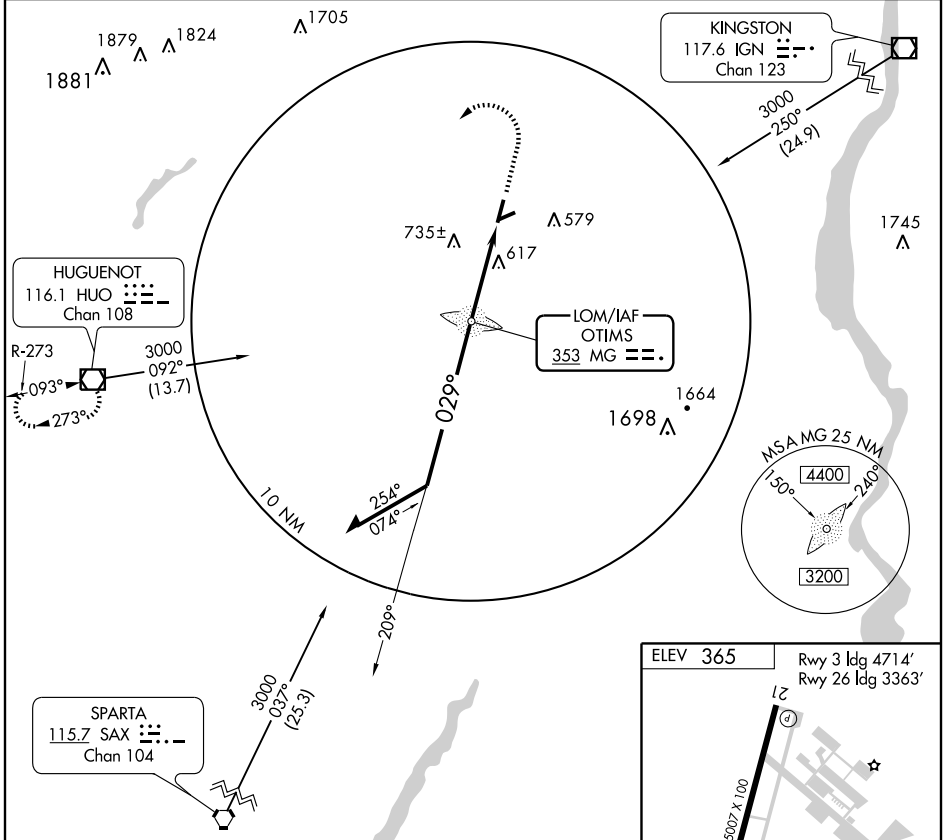
NDB RWY 3

MONTGOMERY/ORANGE COUNTY (MGJ)

LOM MG 353	APP CRS 029°	Rwy ldg TDZE Apt Elev	4714 354 365
----------------------	------------------------	-----------------------------	---

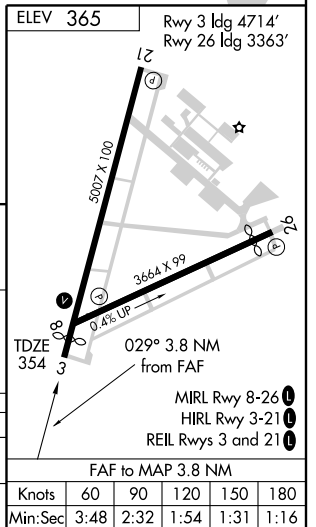
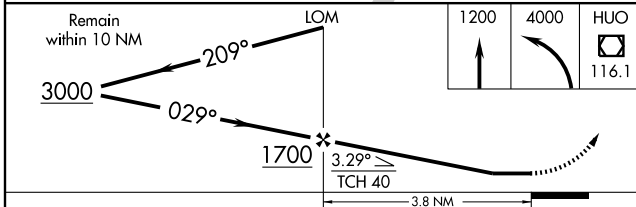
<p>▼</p> <p>▲ NA</p>	<p>MISSED APPROACH: Climb to 1200, then climbing left turn to 4000 direct HUGO VOR/DME and hold.</p>
----------------------	--

ASOS 119.275	NEW YORK APP CON 132.75 363.1	CLNC DEL 123.85	UNICOM 122.725 (CTAF) 0
------------------------	---	---------------------------	--



NE-2, 19 NOV 2009 to 17 DEC 2009

NE-2, 19 NOV 2009 to 17 DEC 2009



CATEGORY	A	B	C	D
S-3	1040-1	686 (700-1)	1040-2	1040-2 1/4
			686 (700-2)	686 (700-2 1/4)
CIRCLING	1200-1	1200-1 1/4	1200-2 1/2	1200-2 3/4
	835 (900-1)	835 (900-1 1/4)	835 (900-2 1/2)	835 (900-2 3/4)

NDB RWY 3