

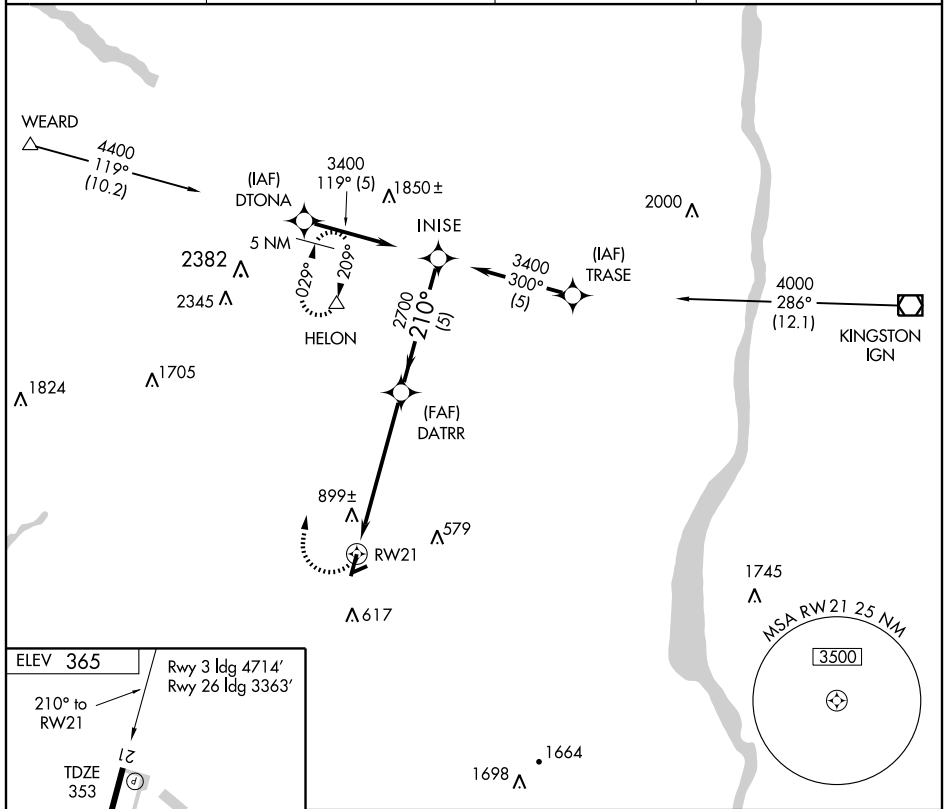
RNAV (GPS) RWY 21

MONTGOMERY / ORANGE COUNTY (MGJ)

APP CRS 210°	Rwy ldg TDZE Apt Elev	5007 353 365
------------------------	-----------------------------	---

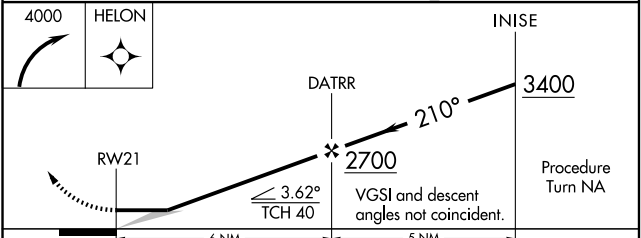
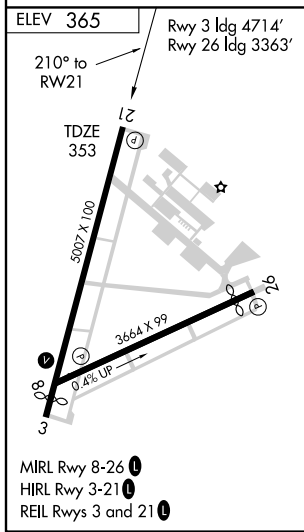
GPS or RNP-0.3 required.	MISSED APPROACH: Climbing right turn to 4000 direct HELON WP and hold.
NA DME/DME RNP-0.3 NA.	

ASOS 119.275	NEW YORK APP CON 132.75 363.1	CLNC DEL 123.85	UNICOM 122.725 (CTAF)
------------------------	---	---------------------------	---------------------------------



NE-2, 19 NOV 2009 to 17 DEC 2009

NE-2, 19 NOV 2009 to 17 DEC 2009



CATEGORY	A	B	C	D
LNAV MDA	1160-1 807 (800-1)	1160-1¼ 807 (800-1¼)	1160-2¼ 807 (800-2¼)	1160-2½ 807 (800-2½)
CIRCLING	1200-1 835 (900-1)	1200-1¼ 835 (900-1¼)	1200-2½ 835 (900-2½)	1200-2¾ 835 (900-2¾)