

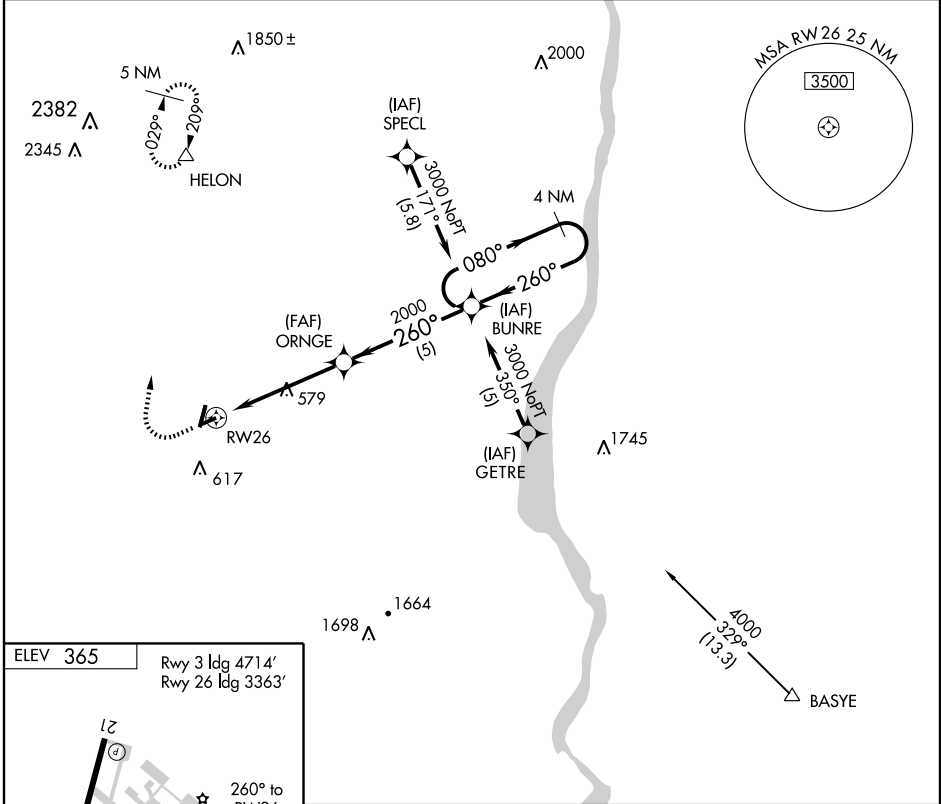
RNAV (GPS) RWY 26

MONTGOMERY / ORANGE COUNTY (MGJ)

APP CRS 260°	Rwy ldg 3363 TDZE 365 Apt Elev 365
------------------------	---

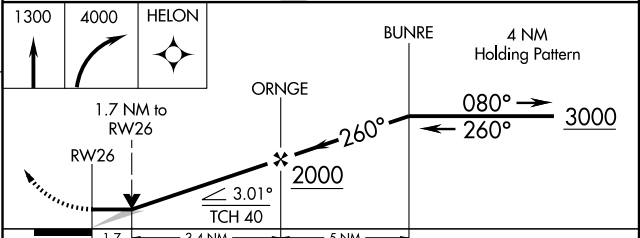
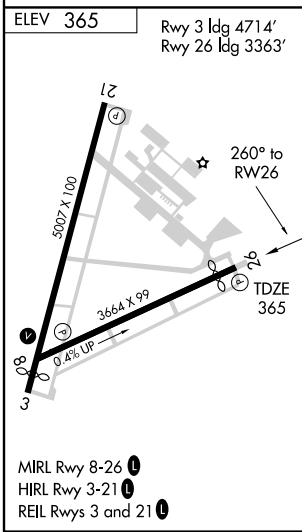
<p>GPS or RNP-0.3 required.</p> <p>NA DME/DME RNP-0.3 NA.</p>	<p>MISSED APPROACH: Climb to 1300, then climbing right turn to 4000 direct HELON WP and hold.</p>
---	---

ASOS 119.275	NEW YORK APP CON 132.75 363.1	CLNC DEL 123.85	UNICOM 122.725 (CTAF) 1
------------------------	---	---------------------------	--



NE-2, 19 NOV 2009 to 17 DEC 2009

NE-2, 19 NOV 2009 to 17 DEC 2009



CATEGORY	A	B	C	D
LNAV MDA	920-1	555 (600-1)	920-1½ 555 (600-1½)	920-1¾ 555 (600-1¾)
CIRCLING	1200-1 835 (900-1)	1200-1¼ 835 (900-1¼)	1200-2½ 835 (900-2½)	1200-2¾ 835 (900-2¾)