

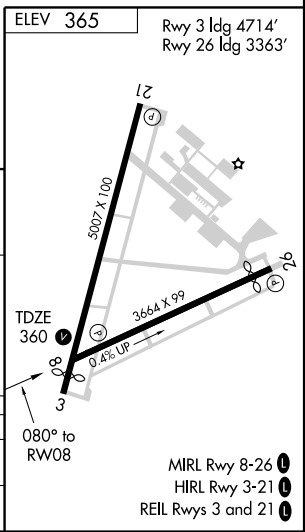
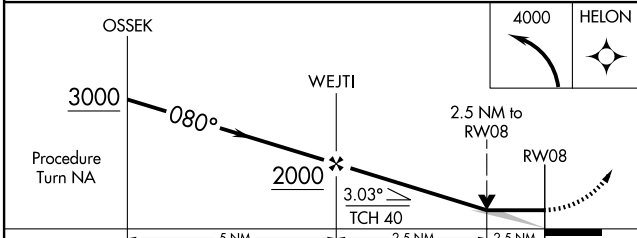
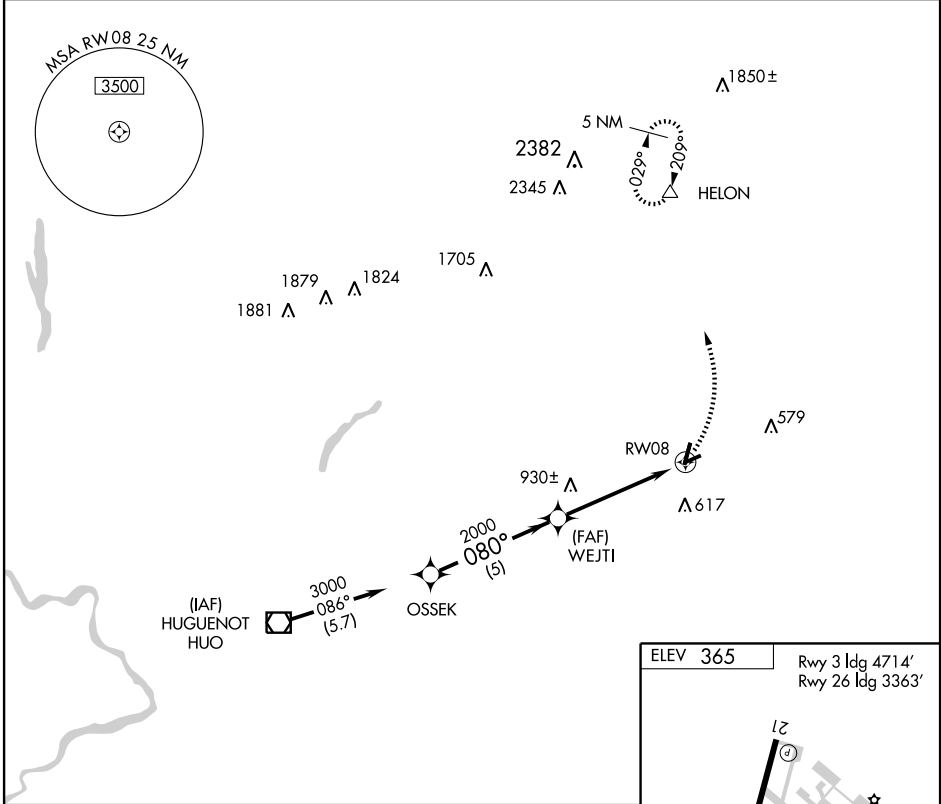
RNAV (GPS) RWY 8

MONTGOMERY / ORANGE COUNTY (MGJ)

APP CRS 080°	Rwy ldg TDZE Apt Elev	3664 360 365
------------------------	-----------------------------	---

<p>▼ GPS or RNP-0.3 required.</p> <p>▲ NA DME/DME RNP-0.3 NA.</p>	<p>MISSED APPROACH: Climbing left turn to 4000 direct HELON WP and hold.</p>
---	--

ASOS 119.275	NEW YORK APP CON 132.75 363.1	CLNC DEL 123.85	UNICOM 122.725 (CTAF) 0
------------------------	---	---------------------------	-----------------------------------



NE-2, 19 NOV 2009 to 17 DEC 2009

NE-2, 19 NOV 2009 to 17 DEC 2009