

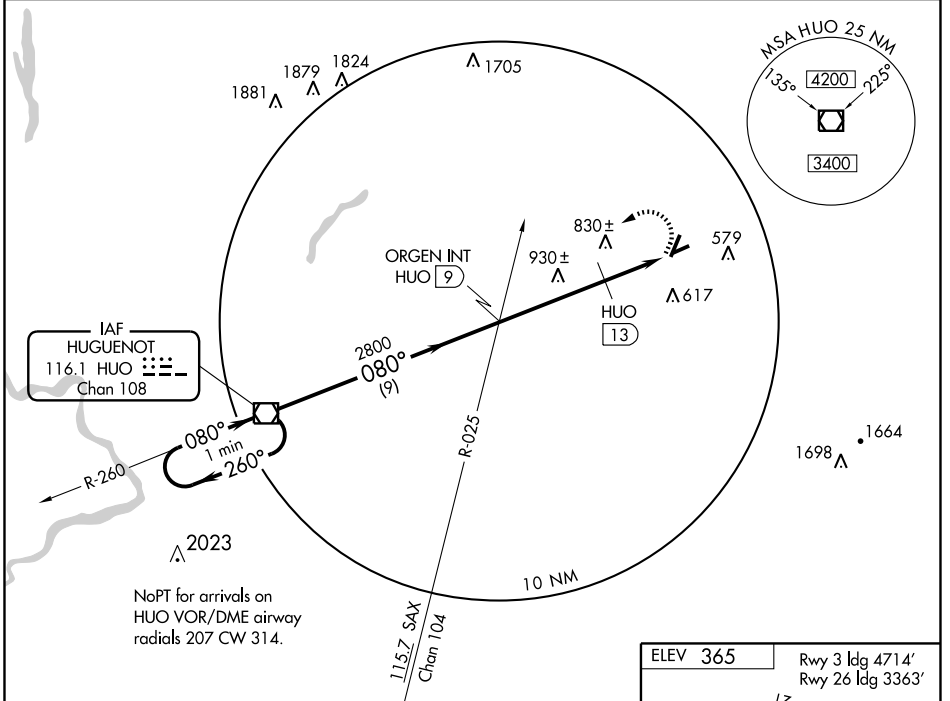
VOR RWY 8

MONTGOMERY/ORANGE COUNTY (MGJ)

VOR/DME HUO 116.1 Chan 108	APP CRS 080°	Rwy ldg TDZE Apt Elev	3664 360 365
---	------------------------	-----------------------------	---

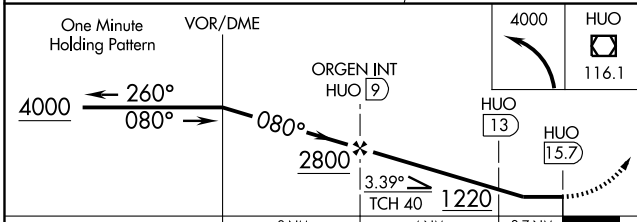
▽ MISSED APPROACH: Climbing left turn to 4000 direct HUO VOR/DME and hold.

ASOS 119.275	NEW YORK APP CON 132.75 363.1	CLNC DEL 123.85	UNICOM 122.725 (CTAF) 0
------------------------	---	---------------------------	--

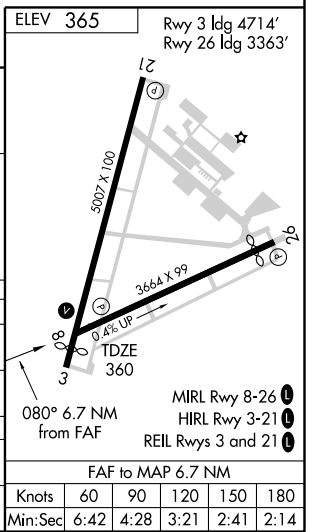


NE-2, 19 NOV 2009 to 17 DEC 2009

NE-2, 19 NOV 2009 to 17 DEC 2009



CATEGORY	A	B	C	D
S-8	1220-1 860 (900-1)	1220-1¼ 860 (900-1¼)	1220-2½ 860 (900-2½)	1220-2¾ 860 (900-2¾)
CIRCLING	1220-1 855 (900-1)	1220-1¼ 855 (900-1¼)	1220-2½ 855 (900-2½)	1220-2¾ 855 (900-2¾)
DME MINIMUMS				
S-8	1160-1 800 (800-1)	1160-1¼ 800 (800-1¼)	1160-2¼ 800 (800-2¼)	1160-2½ 800 (800-2½)
CIRCLING	1200-1 835 (900-1)	1200-1¼ 835 (900-1¼)	1200-2½ 835 900-2½)	1200-2¾ 835 900-2¾)



VOR RWY 8

Knots	60	90	120	150	180
Min:Sec	6:42	4:28	3:21	2:41	2:14