

RNAV (GPS) RWY 26

LAMAR MUNI (L.A.A.)

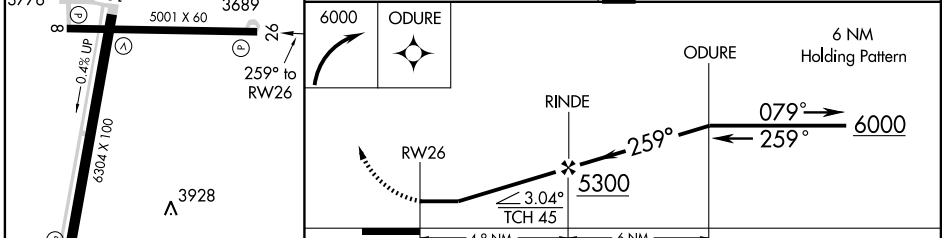
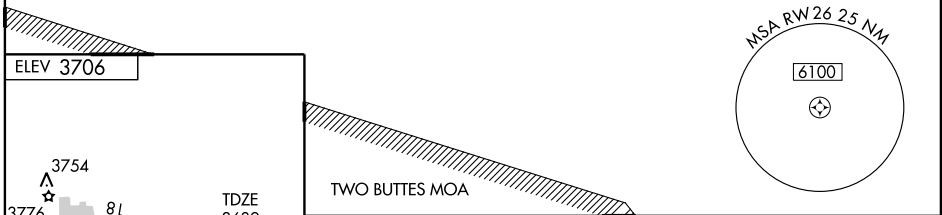
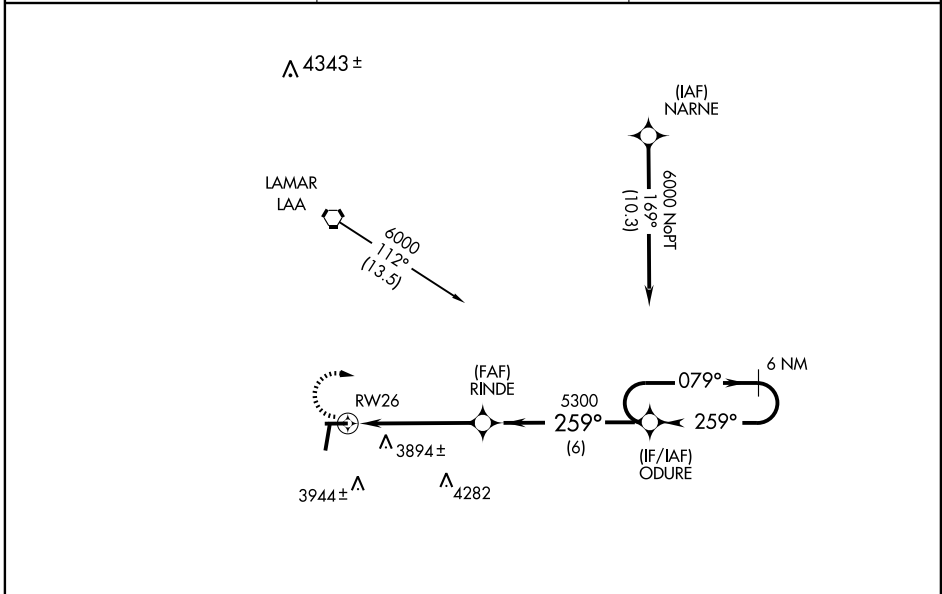
APP CRS 259°	Rwy Idg 5001
	TDZE 3689
	Apt Elev 3706

⚠ Circling NA at night to Rwy 26, 8, and 36.
Straight in NA at night to Rwy 26.

⚠ NA GPS or RNP-0.3 required. DME/DME RNP-0.3 NA.

MISSED APPROACH: Climbing right turn to 6000 direct ODURE WP and hold.

ASOS 135.625	DENVER CENTER 133.4 377.175	UNICOM 122.8 (CTAF) 0
------------------------	---------------------------------------	---------------------------------



CATEGORY	A	B	C	D
LNAV MDA	4180-1	491 (500-1)	4180-1¼ 491 (500-1¼)	4180-1½ 491 (500-1½)
CIRCLING	4420-1	714 (800-1)	4420-2 714 (800-2)	4420-2¼ 714 (800-2¼)

LAMAR, COLORADO
REIL Rwy 18 and 36
MIRL Rwys 8-26 and 18-36 0

38°04'N-102°41'W

RNAV (GPS) RWY 26

SW-1, 11 MAR 2010 to 08 APR 2010

SW-1, 11 MAR 2010 to 08 APR 2010