

# RNAV (GPS) RWY 8

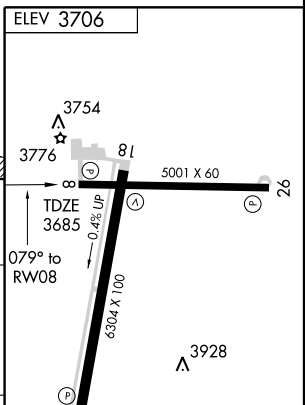
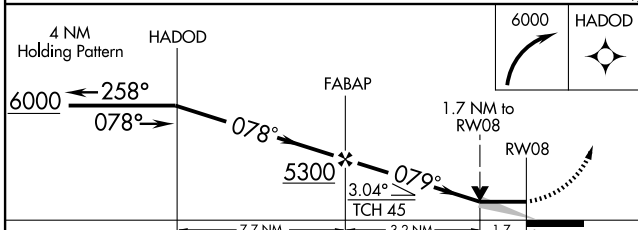
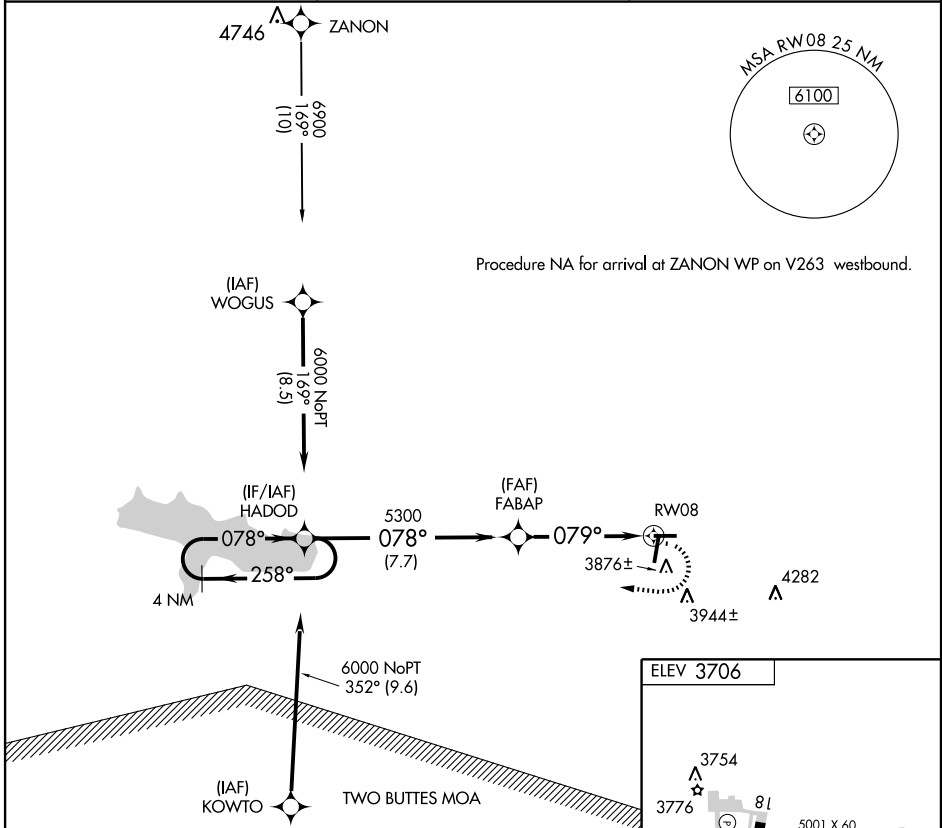
LAMAR MUNI (LAA)

APP CRS <b>079°</b>	Rwy Idg <b>5001</b>
	TDZE <b>3685</b>
	Apt Elev <b>3706</b>

**▽** Circling NA at night to Rwy 8, 26 and 36.  
**▲** NA Straight-in NA at night to Rwy 8.  
 GPS or RNP-0.3 required. DME/DME RNP-0.3 NA.

**MISSED APPROACH:** Climbing right turn to 6000 direct HADOD WP and hold.

ASOS <b>135.625</b>	DENVER CENTER <b>133.4 377.175</b>	UNICOM <b>122.8 (CTAF)</b>
------------------------	---------------------------------------	-------------------------------



CATEGORY	A	B	C	D
RNAV MDA	4280-1	595 (600-1)	4280-1½ 595 (600-1½)	4280-1¾ 595 (600-1¾)
CIRCLING	4420-1	714 (800-1)	4420-2 714 (800-2)	4420-2¼ 714 (800-2¼)

REIL Rwy 18 and 36  
 MIRL Rwy 8-26 and 18-36

SW-1, 11 MAR 2010 to 08 APR 2010

SW-1, 11 MAR 2010 to 08 APR 2010