

RNAV (GPS) RWY 6

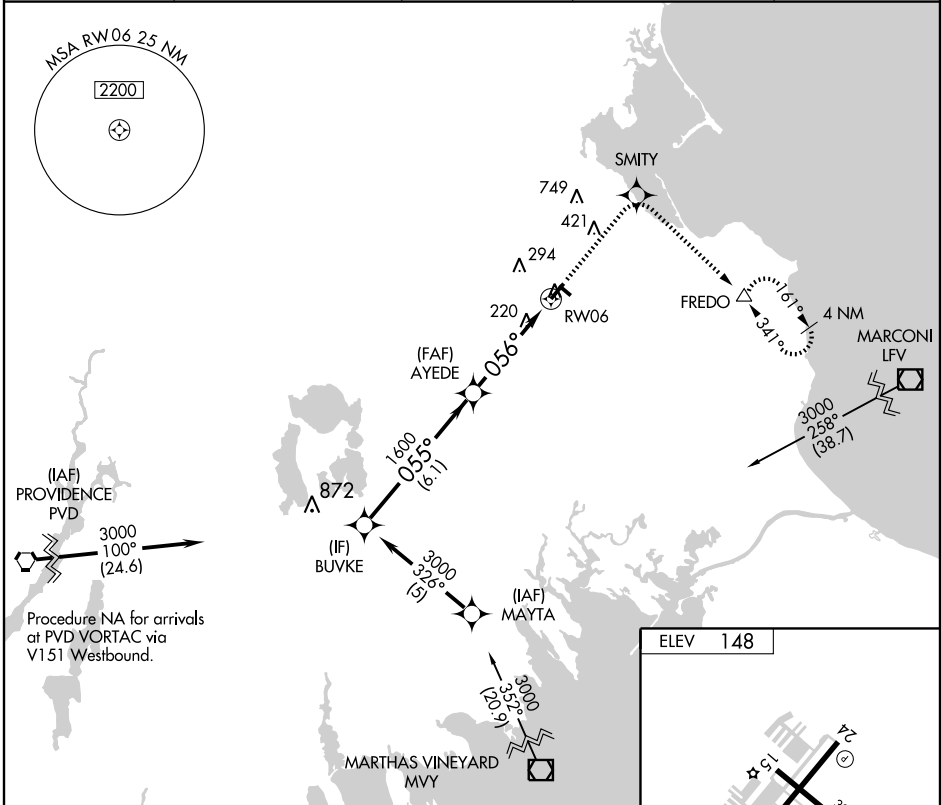
PLYMOUTH MUNI (PYM)

APP CRS 056°	Rwy Idg 4349
	TDZE 145
	Apt Elev 148

▼ If local altimeter setting not received, use Taunton altimeter setting and increase all MDAs 60 feet. VDP NA when using Taunton altimeter setting. Inoperative table does not apply to LNAV Cat C. Visibility reduction by helicopters NA. DME/DME RNP-0.3 NA.

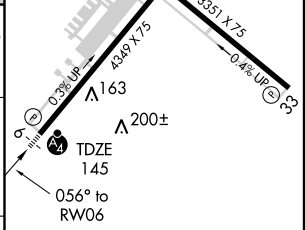
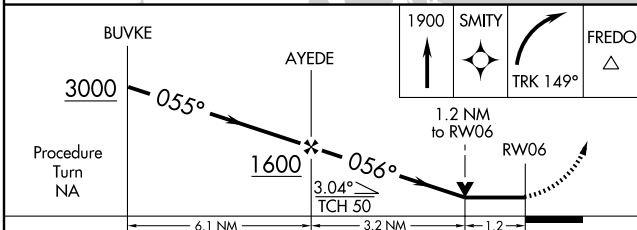
MALSF
 = MISSED APPROACH: Climb to 1900 direct SMITY and right turn via 149° track to FREDO and hold.

ASOS 135.625	CAPE APP CON * 118.2 284.6	CLNC DEL 127.75	UNICOM 123.0 (CTAF)	122.9
------------------------	--------------------------------------	---------------------------	-------------------------------	--------------



NE-1, 11 MAR 2010 to 08 APR 2010

NE-1, 11 MAR 2010 to 08 APR 2010



CATEGORY	A	B	C	D
LNAV MDA	560- $\frac{3}{4}$	415 (500- $\frac{3}{4}$)	560-1 $\frac{1}{4}$ 415 (500-1 $\frac{1}{4}$)	NA
CIRCLING	620-1	472 (500-1)	640-1 $\frac{1}{2}$ 492 (500-1 $\frac{1}{2}$)	NA

REIL Rwy 24
 MIRL Rwys 6-24 and 15-33