

CLARKSVILLE, TENNESSEE

AL-5311 (FAA)

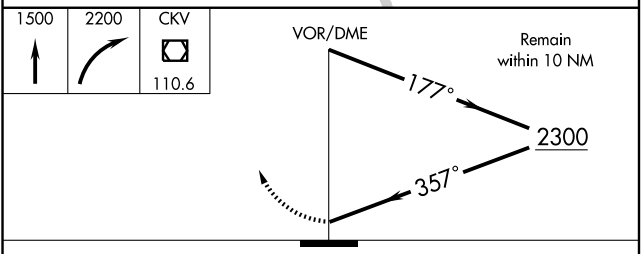
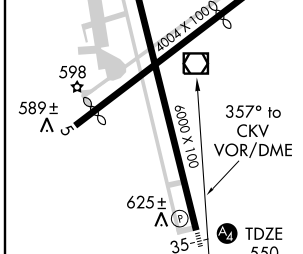
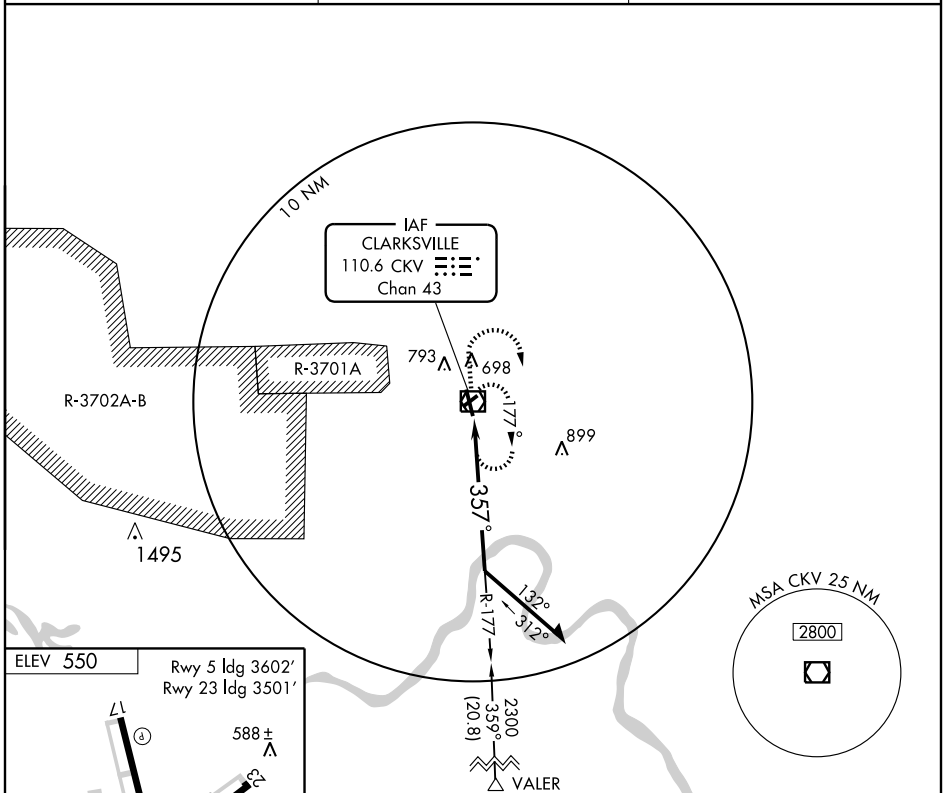
VOR/DME CKV <b>110.6</b> Chan <b>43</b>	APP CRS <b>357°</b>	Rwy ldg <b>6000</b> TDZE <b>550</b> Apt Elev <b>550</b>
---	------------------------	---

# VOR RWY 35

CLARKSVILLE/OUTLAW FIELD (CKV)

<p>Inoperative table does not apply. Circling not authorized west of Rwy 17-35.</p>	<p>MALS</p>	<p>MISSED APPROACH: Climb to 1500 then climbing right turn to 2200 direct CKV VOR/DME and hold.</p>
	<p>ASOS</p> <p><b>134.575</b></p>	

ASOS <b>134.575</b>	CAMPBELL APP CON <b>134.35 307.025</b>	UNICOM <b>122.8 (CTAF)</b>
------------------------	---	-------------------------------



ELEV 550	Rwy 5 ldg 3602'	Rwy 23 ldg 3501'
588±	589±	625±
357° to CKV VOR/DME	TDZE 550	
REIL Rwy 17	MIRL Rwy 17-35	
Knots	60	90
Min:Sec		

CATEGORY	A	B	C	D
S-35	1120-1 570 (600-1)		1120-1½ 570 (600-1½)	1120-1¾ 570 (600-1¾)
CIRCLING	1120-1 570 (600-1)		1120-1½ 570 (600-1½)	1120-2 570 (600-2)

CLARKSVILLE, TENNESSEE  
Amdt 15E 07298

36°37'N - 87°25'W

# CLARKSVILLE/ OUTLAW FIELD (CKV) VOR RWY 35

SE-1, 19 NOV 2009 to 17 DEC 2009

SE-1, 19 NOV 2009 to 17 DEC 2009