

CLARKSVILLE, TENNESSEE

AL-5311 (FAA)

WAAS CH 58300 W35A	APP CRS 347°	Rwy ldg 6000 TDZE 550 Apt Elev 550
--	------------------------	---

RNAV (GPS) RWY 35

CLARKSVILLE/OUTLAW FIELD (CKV)

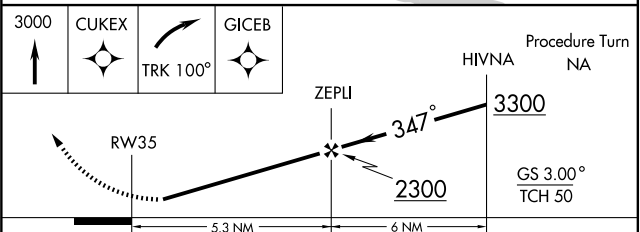
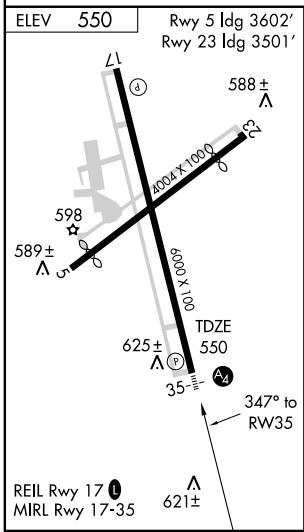
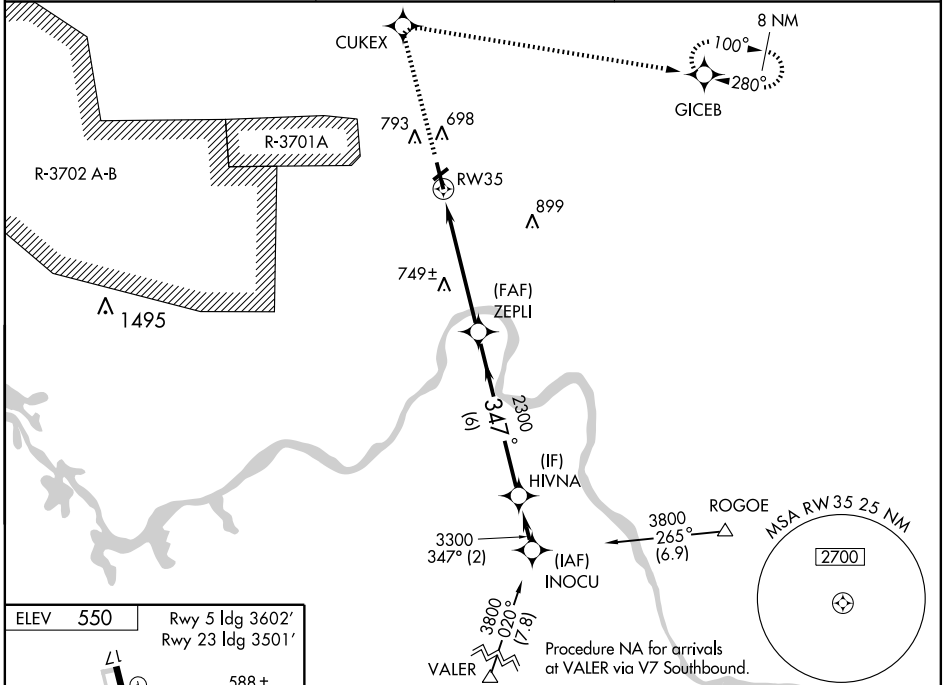
▼ Inoperative table does not apply. Circling NA west of Rwy 17-35.
▲ DME/DME RNP-0.3 NA. If local altimeter setting not received, use Hopkinsville altimeter setting and increase LPV DA to 872, LNAV/VNAV DA to 914, and all MDAs 40 feet. For uncompensated Baro-VNAV systems, LNAV/VNAV NA below -16°C (4°F) or above 48°C (118°F). Baro-VNAV NA when using Hopkinsville altimeter setting.

MALS



MISSED APPROACH: Climb to 3000 direct CUKEX and right turn via 100° track to GICEB and hold.

ASOS 134.575	CAMPBELL APP CON 134.35 307.025	UNICOM 122.8(CTAF) 0
------------------------	---	--------------------------------



CATEGORY	A	B	C	D
LPV DA		837-1	287 (300-1)	
LNAV/VNAV DA		879-1¼	329 (400-1¼)	
LNAV MDA	1000-1	450 (500-1)	1000-1¼ 450 (500-1¼)	1000-1½ 450 (500-1½)
CIRCLING	1000-1¼ 450 (500-1¼)	1020-1¼ 470 (500-1¼)	1020-1½ 470 (500-1½)	1100-2 550 (600-2)

CLARKSVILLE, TENNESSEE
Orig 07298

36°37'N - 87°25'W

CLARKSVILLE/OUTLAW FIELD (CKV) RNAV (GPS) RWY 35

SE-1, 19 NOV 2009 to 17 DEC 2009

SE-1, 19 NOV 2009 to 17 DEC 2009