

CLARKSVILLE, TENNESSEE

AL-5311 (FAA)

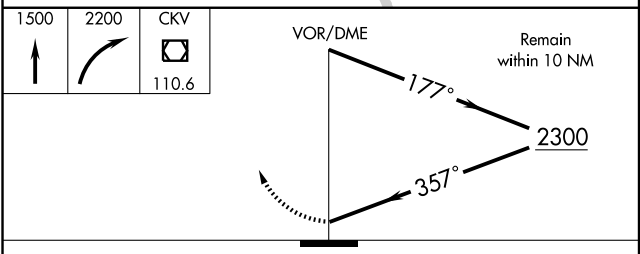
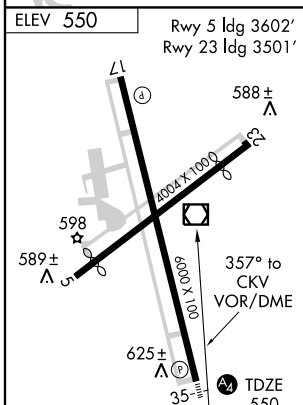
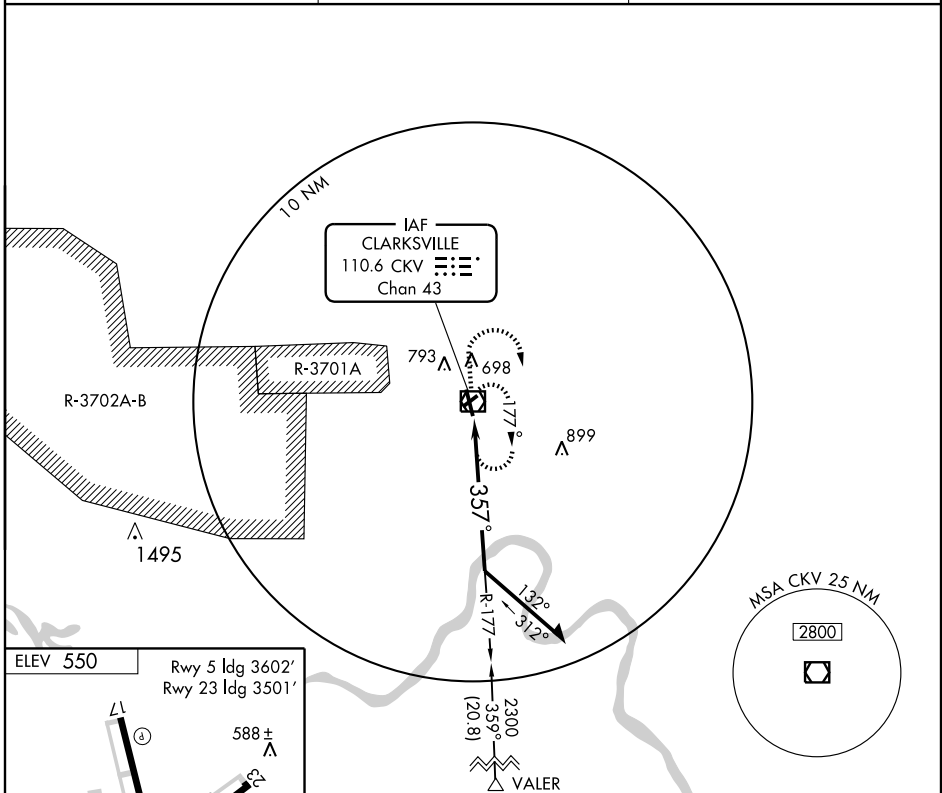
VOR/DME CKV 110.6 Chan 43	APP CRS 357°	Rwy ldg 6000 TDZE 550 Apt Elev 550
---	------------------------	---

VOR RWY 35

CLARKSVILLE/OUTLAW FIELD (CKV)

<p>Inoperative table does not apply. Circling not authorized west of Rwy 17-35.</p>	<p>MALS</p>	<p>MISSED APPROACH: Climb to 1500 then climbing right turn to 2200 direct CKV VOR/DME and hold.</p>
	<p>ASOS</p> <p>134.575</p>	

<p>UNICOM</p> <p>122.8 (CTAF) </p>



	60	90	120	150	180
Knots					
Min:Sec					

CATEGORY	A	B	C	D
S-35	1120-1 570 (600-1)		1120-1½ 570 (600-1½)	1120-1¾ 570 (600-1¾)
CIRCLING	1120-1 570 (600-1)		1120-1½ 570 (600-1½)	1120-2 570 (600-2)

CLARKSVILLE, TENNESSEE
Amdt 15E 07298

36°37'N - 87°25'W

CLARKSVILLE/ OUTLAW FIELD (CKV) VOR RWY 35

SE-1, 11 MAR 2010 to 08 APR 2010

SE-1, 11 MAR 2010 to 08 APR 2010