

LOC ILE 108.3	APP CRS 012°	Rwy Idg 4651
		TDZE 844
		Apt Elev 848

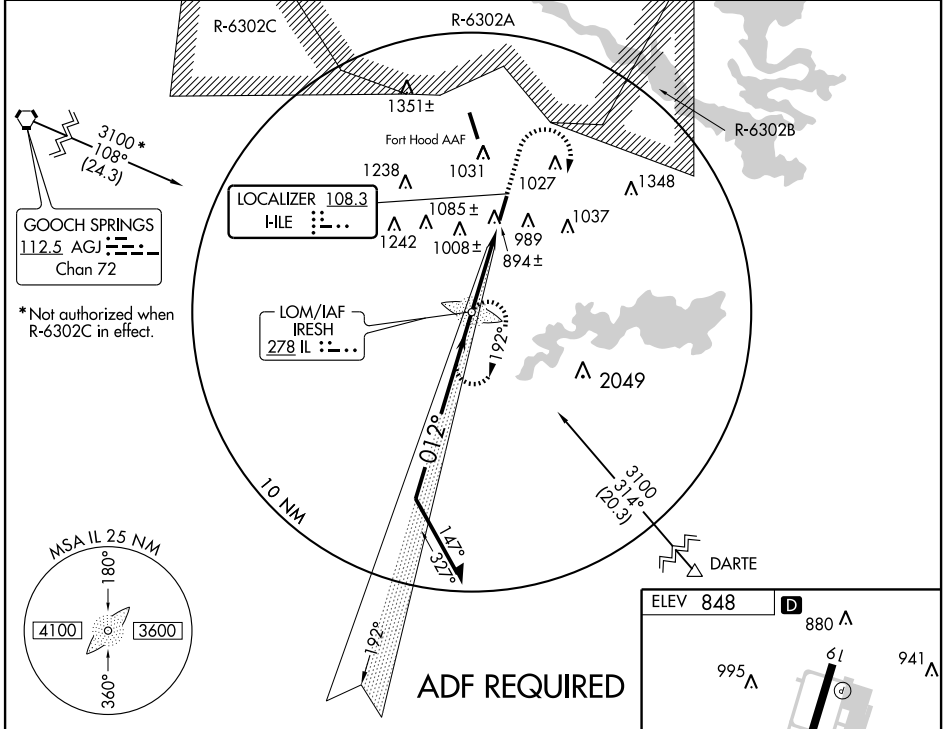
ILS or LOC RWY 1

KILLEEN/SKYLARK FIELD (I,LE)

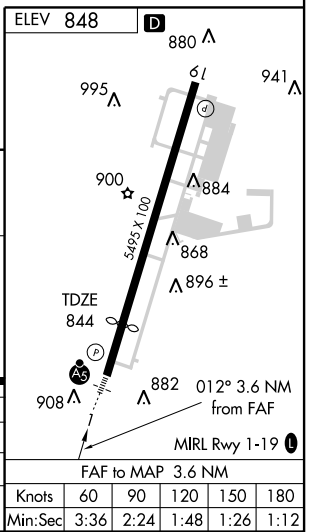
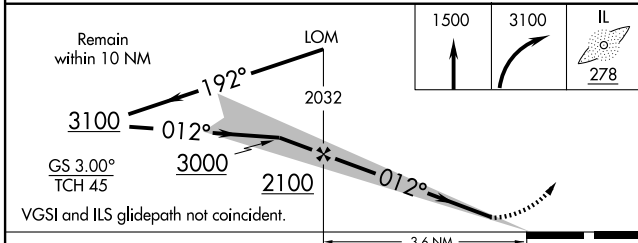
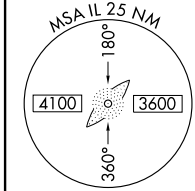
NA Inoperative table does not apply. For inoperative MALSR, increase S-LOC 1 Cats A, B and C visibility to 1 mile. ADF required. When local altimeter setting not received, use Robert Gray AAF altimeter setting and increase all DA 41 feet and all MDA 60 feet. For inoperative MALSR when using Robert Gray AAF altimeter setting, increase S-LOC 1 Cats A, B, and C visibility to 1 mile. Visibility reduction by helicopters NA.

MALSR MISSED APPROACH: Climb to 1500 then climbing right turn to 3100 direct IRESH LOM and hold, continue climb in hold to 3100.

AWOS-3 128.575	GRAY APP CON 120.075 323.15	CLNC DEL 121.7	UNICOM 122.7 (CTAF) 0
--------------------------	---------------------------------------	--------------------------	---------------------------------



*Not authorized when R-6302C in effect.



CATEGORY	A	B	C	D
S-ILS 1		1094- ³ / ₄ 250 (300- ³ / ₄)		NA
S-LOC 1		1180- ³ / ₄ 336 (400- ³ / ₄)		NA
CIRCLING	1320-1 472 (500-1)	1360-1 512 (600-1)	1360-1 1/2 512 (600-1 1/2)	NA

FAF to MAP 3.6 NM					
Knots	60	90	120	150	180
Min:Sec	3:36	2:24	1:48	1:26	1:12

SC-3, 11 MAR 2010 to 08 APR 2010

SC-3, 11 MAR 2010 to 08 APR 2010